

## Product datasheet for **TA364763S**

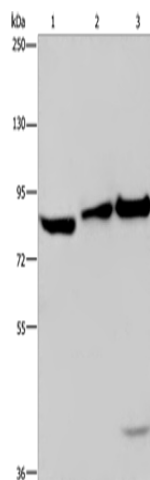
### ECE1 Rabbit Polyclonal Antibody

#### Product data:

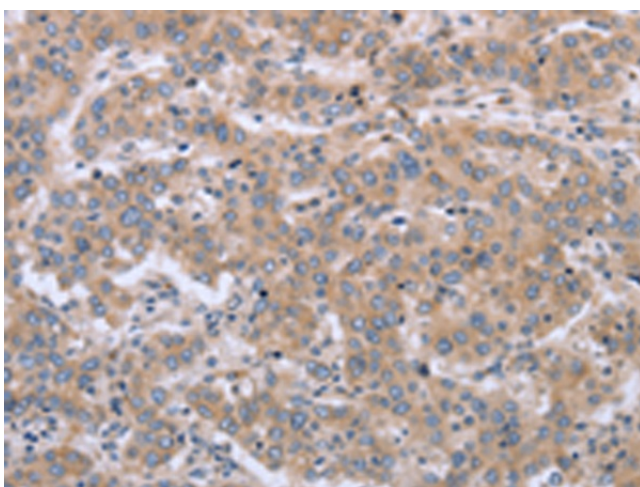
Product Type:	Primary Antibodies
Applications:	IHC, WB
Recommended Dilution:	WB: 500-2000 WB positive control: NIH/3T3 cells, mouse lung and liver tissue IHC: 25-100 Positive control: Human liver cancer Predicted cell location: Cytoplasm
Reactivity:	Human, Mouse
Host:	Rabbit
Isotype:	IgG
Clonality:	Polyclonal
Immunogen:	Fusion protein of human ECE1
Formulation:	pH7.4 PBS, 0.05% NaN <sub>3</sub> , 40% Glycerol
Purification:	Antigen affinity purification
Conjugation:	Unconjugated
Storage:	Store at -20°C.
Stability:	1 year
Predicted Protein Size:	87 kDa
Gene Name:	endothelin converting enzyme 1
Database Link:	<a href="#">Entrez Gene 1889 Human P42892</a>
Background:	The protein encoded by this gene is involved in proteolytic processing of endothelin precursors to biologically active peptides. Mutations in this gene are associated with Hirschsprung disease, cardiac defects and autonomic dysfunction. Alternatively spliced transcript variants encoding different isoforms have been noted for this gene.
Synonyms:	ECE; ECE-1



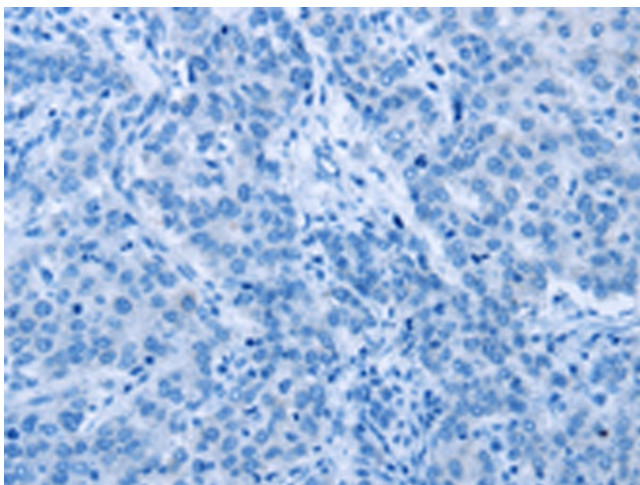
[View online »](#)

**Product images:**

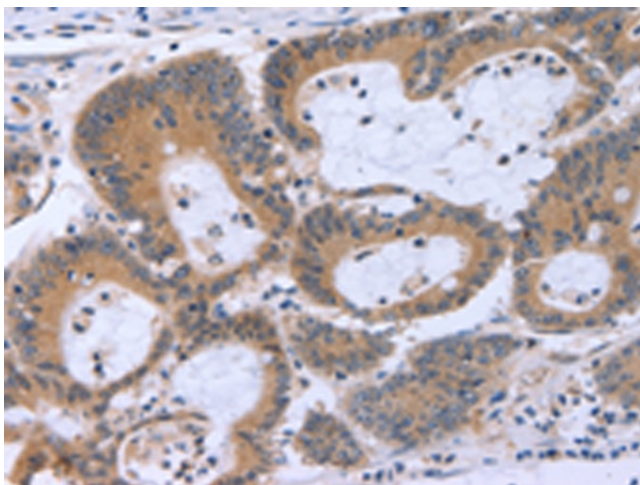
Gel: 6%SDS-PAGE  
Lysate: 40 µg  
Lane 1-3: NIH/3T3 cells  
mouse lung tissue  
Mouse liver tissue  
Primary antibody: [TA364763] (ECE1 Antibody) at dilution 1/550  
Secondary antibody: Goat anti rabbit IgG at 1/8000 dilution  
Exposure time: 3 seconds



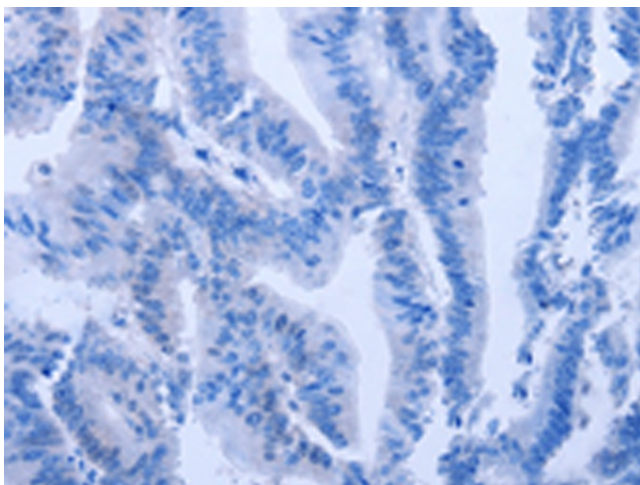
Immunohistochemistry of paraffin-embedded Human liver cancer tissue using [TA364763] (ECE1 Antibody) at dilution 1/30 (Original magnification: ×200)



Immunohistochemistry of paraffin-embedded Human liver cancer tissue using [TA364763] (ECE1 Antibody) at dilution 1/30, treated with fusion protein. (Original magnification: x200)



Immunohistochemistry of paraffin-embedded Human colon cancer tissue using [TA364763] (ECE1 Antibody) at dilution 1/30 (Original magnification: x200)



Immunohistochemistry of paraffin-embedded Human colon cancer tissue using [TA364763] (ECE1 Antibody) at dilution 1/30, treated with fusion protein. (Original magnification: x200)