

## Product datasheet for **TA364761**

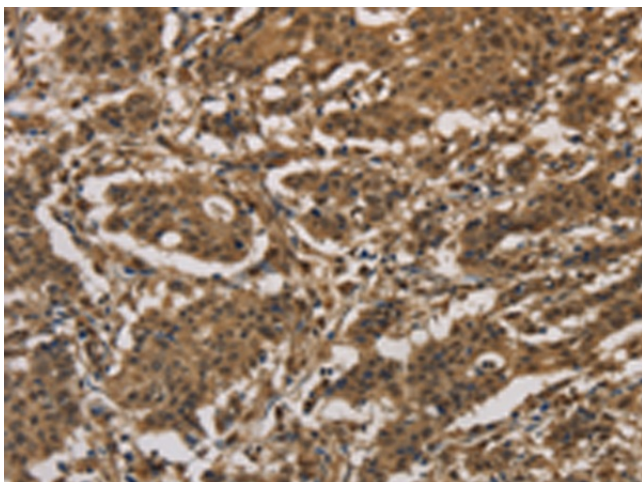
### DUSP23 Rabbit Polyclonal Antibody

#### Product data:

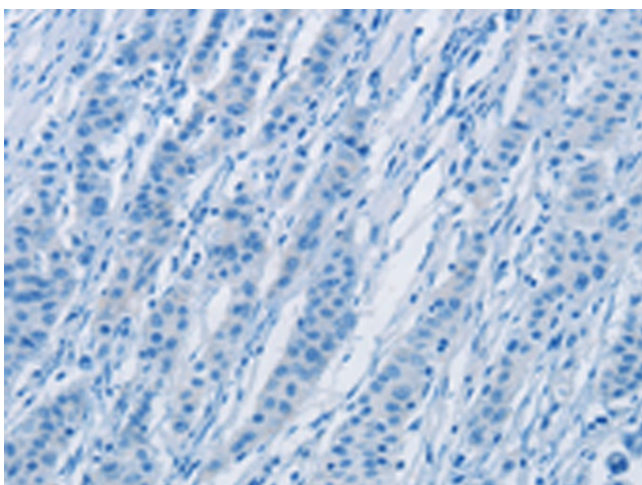
Product Type:	Primary Antibodies
Applications:	IHC
Recommended Dilution:	IHC: 50-200 Positive control: Human gastric cancer Predicted cell location: Cytoplasm or Nucleus
Reactivity:	Human, Mouse
Host:	Rabbit
Isotype:	IgG
Clonality:	Polyclonal
Immunogen:	Fusion protein of human DUSP23
Formulation:	pH7.4 PBS, 0.05% NaN <sub>3</sub> , 40% Glycerol
Concentration:	lot specific
Purification:	Antigen affinity purification
Conjugation:	Unconjugated
Storage:	Store at -20°C.
Stability:	1 year
Gene Name:	dual specificity phosphatase 23
Database Link:	<a href="#">Entrez Gene 54935 Human Q9BVJ7</a>
Background:	Dual specificity protein phosphatase 23, also known as low molecular mass dual specificity phosphatase 3 (LDP-3), is an enzyme that in humans is encoded by the DUSP23 gene.
Synonyms:	DUSP25; FLJ20442; LDP-3; LDP3; MOSP; OTTHUMP00000024412; OTTHUMP00000033306; RP11-190A12.1; VHZ



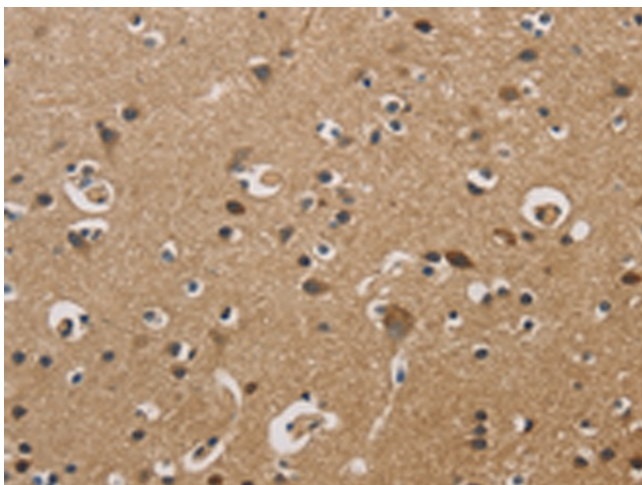
[View online »](#)

**Product images:**

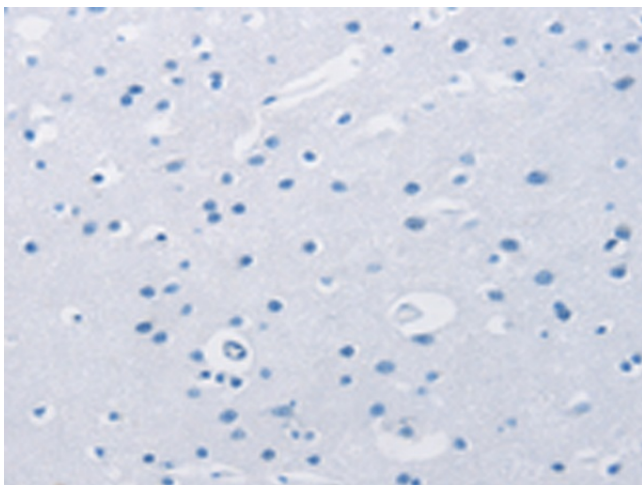
Immunohistochemistry of paraffin-embedded Human gastric cancer tissue using TA364761 (DUSP23 Antibody) at dilution 1/20 (Original magnification:  $\times 200$ )



Immunohistochemistry of paraffin-embedded Human gastric cancer tissue using TA364761 (DUSP23 Antibody) at dilution 1/20, treated with fusion protein. (Original magnification:  $\times 200$ )



Immunohistochemistry of paraffin-embedded Human brain tissue using TA364761 (DUSP23 Antibody) at dilution 1/20 (Original magnification: ×200)



Immunohistochemistry of paraffin-embedded Human brain tissue using TA364761 (DUSP23 Antibody) at dilution 1/20, treated with fusion protein. (Original magnification: ×200)