

## Product datasheet for **TA364759**

### DNase I (DNASE1) Rabbit Polyclonal Antibody

#### Product data:

Product Type:	Primary Antibodies
Applications:	IHC
Recommended Dilution:	IHC: 25-100 Positive control: Human thyroid cancer Predicted cell location: Secreted
Reactivity:	Human, Mouse, Rat
Host:	Rabbit
Isotype:	IgG
Clonality:	Polyclonal
Immunogen:	Fusion protein of human DNASE1
Formulation:	pH7.4 PBS, 0.05% NaN <sub>3</sub> , 40% Glycerol
Concentration:	lot specific
Purification:	Antigen affinity purification
Conjugation:	Unconjugated
Storage:	Store at -20°C.
Stability:	1 year
Gene Name:	deoxyribonuclease I
Database Link:	<a href="#">Entrez Gene 1773 Human P24855</a>

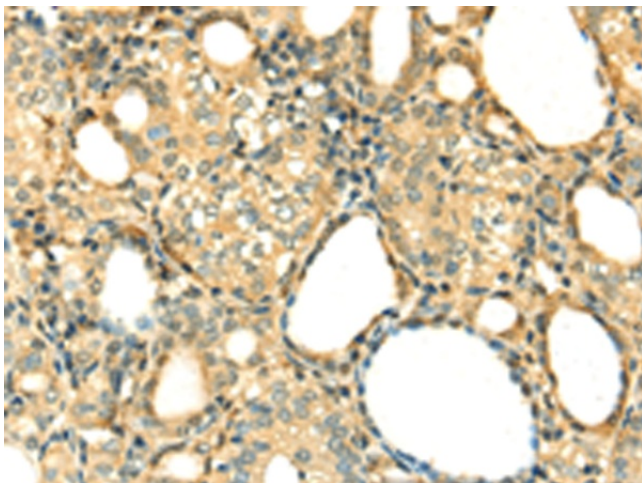
**Background:** This gene encodes a member of the DNase family. This protein is stored in the zymogen granules of the nuclear envelope and functions by cleaving DNA in an endonucleolytic manner. At least six autosomal codominant alleles have been characterized, DNASE1\*1 through DNASE1\*6, and the sequence of DNASE1\*2 represented in this record. Mutations in this gene have been associated with systemic lupus erythematosus (SLE), an autoimmune disease. A recombinant form of this protein is used to treat the one of the symptoms of cystic fibrosis by hydrolyzing the extracellular DNA in sputum and reducing its viscosity. Alternate transcriptional splice variants of this gene have been observed but have not been thoroughly characterized.



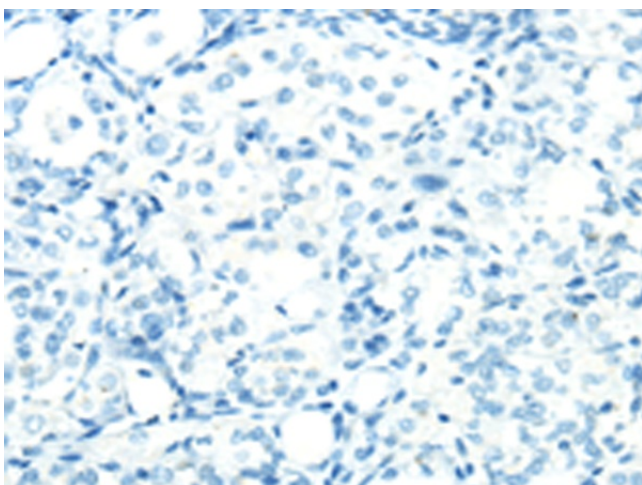
[View online »](#)

Synonyms: DKFZp686H0155; DNL1; DRNI; FLJ38093; FLJ44902

### Product images:



Immunohistochemistry of paraffin-embedded Human thyroid cancer tissue using TA364759 (DNASE1 Antibody) at dilution 1/20 (Original magnification:  $\times 200$ )



Immunohistochemistry of paraffin-embedded Human thyroid cancer tissue using TA364759 (DNASE1 Antibody) at dilution 1/20, treated with fusion protein. (Original magnification:  $\times 200$ )