

Product datasheet for **TA364746**

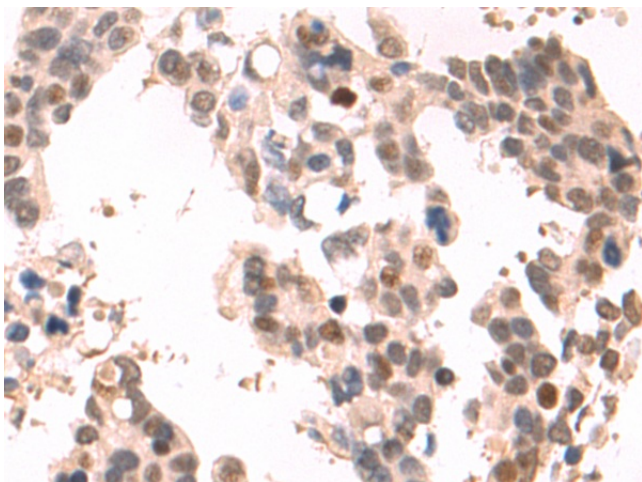
DACH1 Rabbit Polyclonal Antibody

Product data:

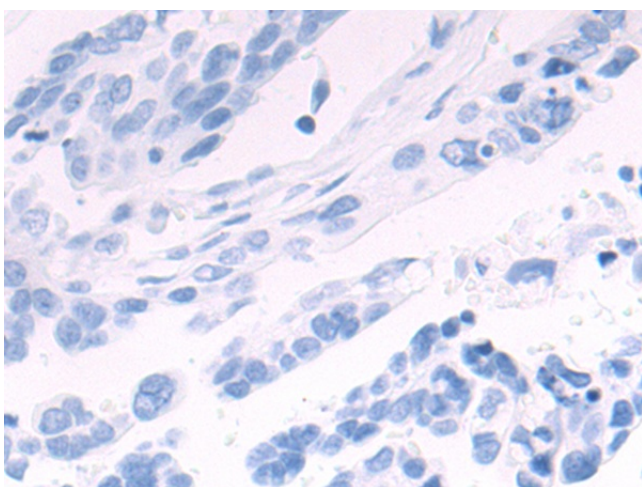
Product Type:	Primary Antibodies
Applications:	IHC
Recommended Dilution:	IHC: 50-100 Positive control: Human colorectal cancer Predicted cell location: Nucleus
Reactivity:	Human, Mouse
Host:	Rabbit
Isotype:	IgG
Clonality:	Polyclonal
Immunogen:	Fusion protein of human DACH1
Formulation:	pH7.4 PBS, 0.05% NaN ₃ , 40% Glycerol
Concentration:	lot specific
Purification:	Antigen affinity purification
Conjugation:	Unconjugated
Storage:	Store at -20°C.
Stability:	1 year
Gene Name:	dachshund family transcription factor 1
Database Link:	Entrez Gene 1602 Human Q9UI36
Background:	This gene encodes a chromatin-associated protein that associates with other DNA-binding transcription factors to regulate gene expression and cell fate determination during development. The protein contains a Ski domain that is highly conserved from Drosophila to human. Expression of this gene is lost in some forms of metastatic cancer, and is correlated with poor prognosis. Multiple transcript variants encoding different isoforms have been found for this gene.
Synonyms:	DACH; FLJ10138



[View online »](#)

Product images:

Immunohistochemistry of paraffin-embedded Human colorectal cancer tissue using TA364746 (DACH1 Antibody) at dilution 1/50 (Original magnification: $\times 200$)



Immunohistochemistry of paraffin-embedded Human colorectal cancer tissue using TA364746 (DACH1 Antibody) at dilution 1/50, treated with fusion protein. (Original magnification: $\times 200$)