

Product datasheet for **TA364743S**

HSPA4 Rabbit Polyclonal Antibody

Product data:

Product Type:	Primary Antibodies
Applications:	IHC, WB
Recommended Dilution:	WB: 200-1000 WB positive control: Hela, Raji, NIH/3T3, A375 and 293T cells IHC: 50-200 Positive control: Human liver cancer Predicted cell location: Cytoplasm or Nucleus
Reactivity:	Human, Mouse
Host:	Rabbit
Isotype:	IgG
Clonality:	Polyclonal
Immunogen:	Fusion protein of human HSPA4
Formulation:	pH7.4 PBS, 0.05% NaN ₃ , 40% Glycerol
Purification:	Antigen affinity purification
Conjugation:	Unconjugated
Storage:	Store at -20°C.
Stability:	1 year
Predicted Protein Size:	94 kDa
Gene Name:	heat shock protein family A (Hsp70) member 4
Database Link:	Entrez Gene 3308 Human P34932

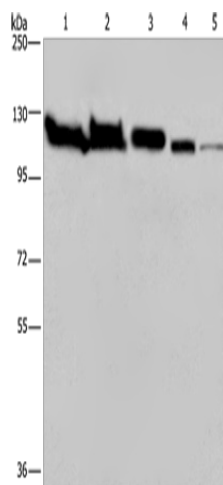
Background: The heat shock proteins (HSPs) comprise a group of highly conserved, abundantly expressed proteins with diverse functions, which include the assembly and sequestering of multiprotein complexes, transportation of nascent polypeptide chains across cellular membranes and regulation of protein folding. Heat shock proteins (also known as molecular chaperones) fall into six general families: HSP 90, HSP 70, HSP 60, the low molecular weight HSPs, the immunophilins and the HSP 110 family. The HSP 110 family (also known as the HSP 105 family) is composed of HSP 105, Apg-1 and Apg-2.



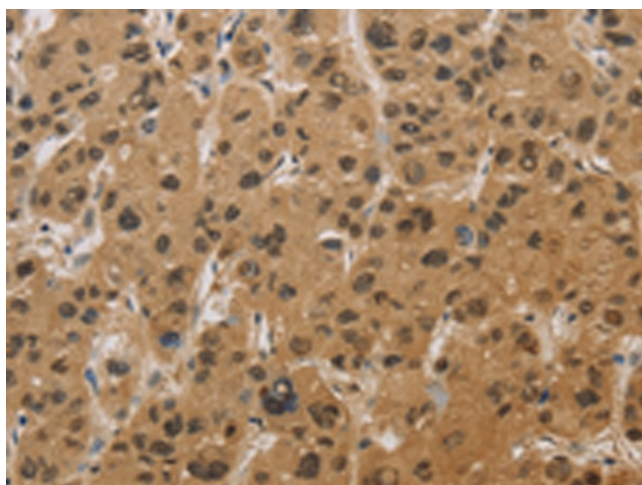
[View online »](#)

Synonyms: APG-2; APG2; HS24/P52; hsp70; hsp70RY; MGC131852; RY

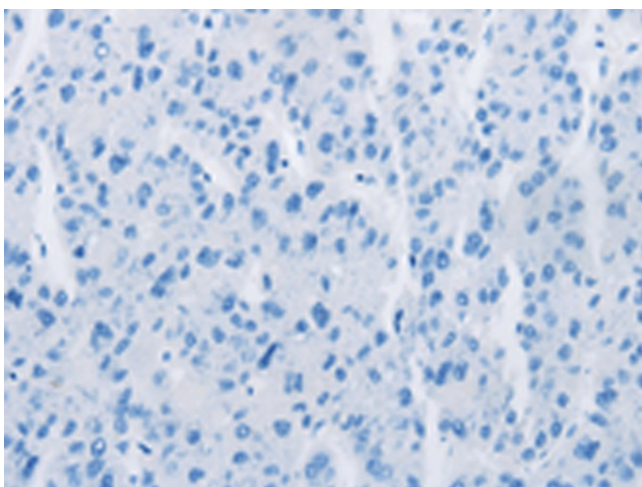
Product images:



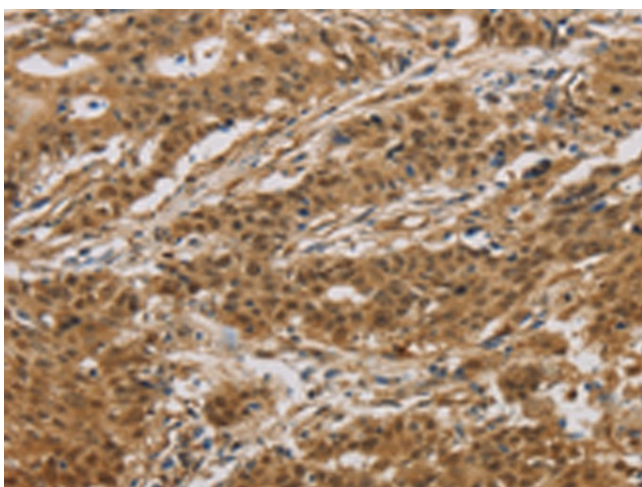
Gel: 6%SDS-PAGE
Lysate: 40 μ g
Lane 1-5: HeLa cells
Raji cells
NIH/3T3 cells
A375 cells
293T cells
Primary antibody: [TA364743] (HSPA4 Antibody)
at dilution 1/200
Secondary antibody: Goat anti rabbit IgG at
1/8000 dilution
Exposure time: 2 minutes



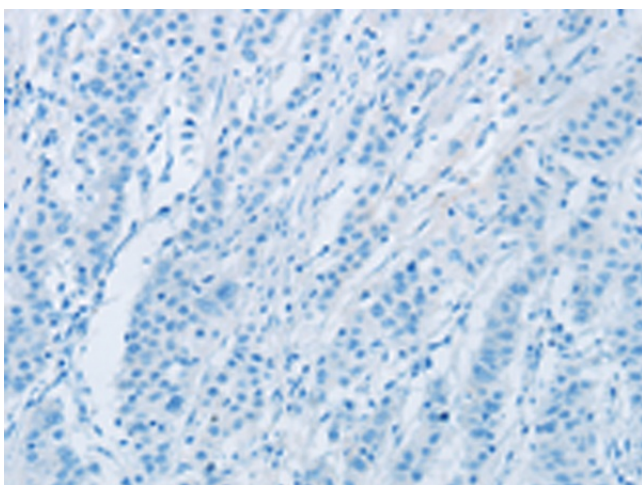
Immunohistochemistry of paraffin-embedded
Human liver cancer tissue using [TA364743]
(HSPA4 Antibody) at dilution 1/20 (Original
magnification: \times 200)



Immunohistochemistry of paraffin-embedded Human liver cancer tissue using [TA364743] (HSPA4 Antibody) at dilution 1/20, treated with fusion protein. (Original magnification: ×200)



Immunohistochemistry of paraffin-embedded Human gastric cancer tissue using [TA364743] (HSPA4 Antibody) at dilution 1/20 (Original magnification: ×200)



Immunohistochemistry of paraffin-embedded Human gastric cancer tissue using [TA364743] (HSPA4 Antibody) at dilution 1/20, treated with fusion protein. (Original magnification: ×200)