

## Product datasheet for **TA364738S**

### Cyclophilin F (PPIF) Rabbit Polyclonal Antibody

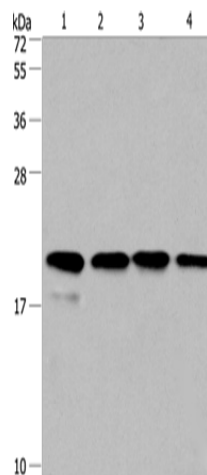
#### Product data:

Product Type:	Primary Antibodies
Applications:	IHC, WB
Recommended Dilution:	WB: 500-2000 WB positive control: PC3 and 293T cells, human liver cancer tissue and hela cells IHC: 100-300 Positive control: Human thyroid cancer Predicted cell location: Cytoplasm
Reactivity:	Human, Mouse, Rat
Host:	Rabbit
Isotype:	IgG
Clonality:	Polyclonal
Immunogen:	Fusion protein of human PPIF
Formulation:	pH7.4 PBS, 0.05% NaN <sub>3</sub> , 40% Glycerol
Purification:	Antigen affinity purification
Conjugation:	Unconjugated
Storage:	Store at -20°C.
Stability:	1 year
Predicted Protein Size:	22 kDa
Gene Name:	peptidylprolyl isomerase F
Database Link:	<a href="#">Entrez Gene 10105 Human P30405</a>
Background:	The protein encoded by this gene is a member of the peptidyl-prolyl cis-trans isomerase (PPIase) family. PPIases catalyze the cis-trans isomerization of proline imidic peptide bonds in oligopeptides and accelerate the folding of proteins. This protein is part of the mitochondrial permeability transition pore in the inner mitochondrial membrane. Activation of this pore is thought to be involved in the induction of apoptotic and necrotic cell death.
Synonyms:	Cyp-D; CYP3; FLJ90798; hCyP3; MGC117207; PPIase; rotamase

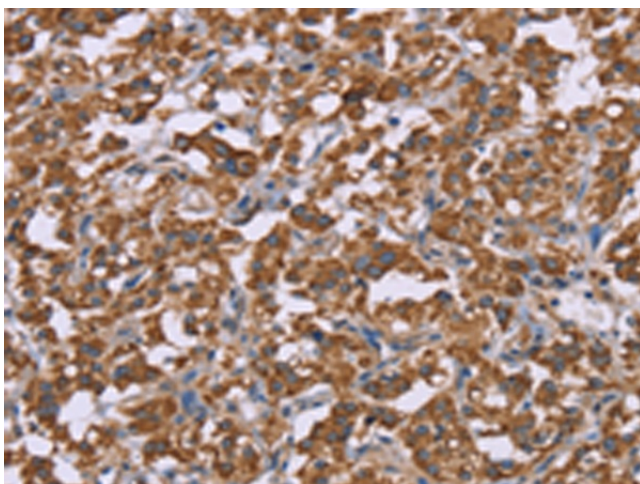


[View online »](#)

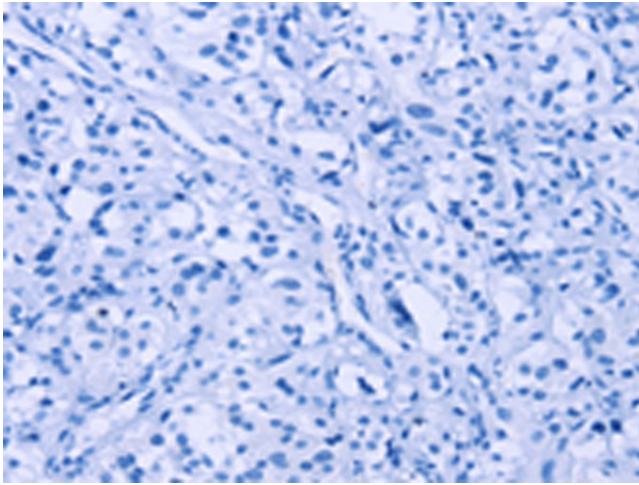
## Product images:



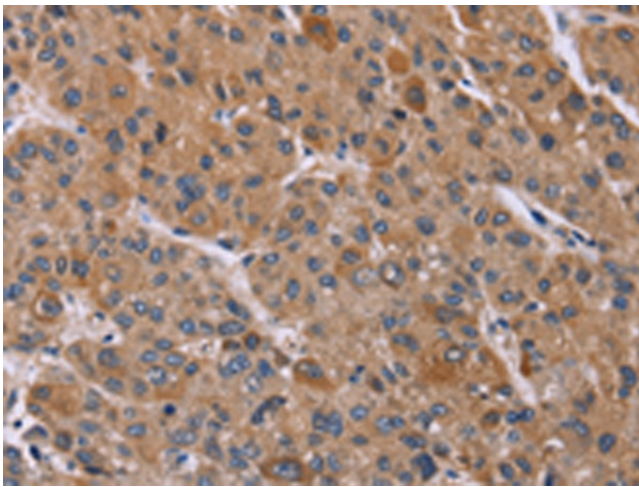
Gel: 10%SDS-PAGE  
Lysate: 40 µg  
Lane 1-4: PC3 cells  
293T cells  
human liver cancer tissue  
hela cells  
Primary antibody: [TA364738] (PPIF Antibody) at dilution 1/500  
Secondary antibody: Goat anti rabbit IgG at 1/8000 dilution  
Exposure time: 20 seconds



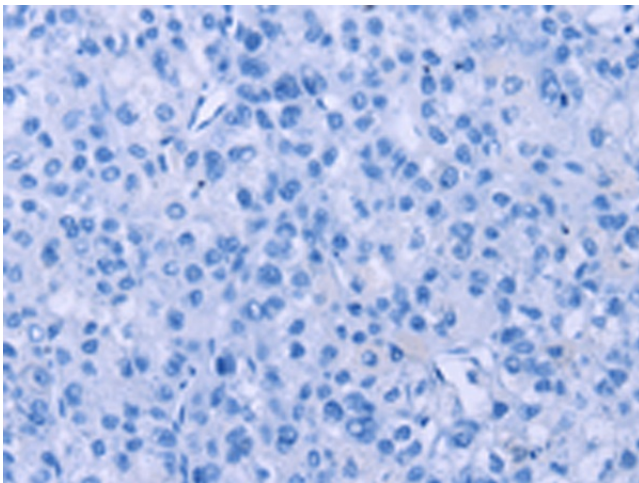
Immunohistochemistry of paraffin-embedded Human thyroid cancer tissue using [TA364738] (PPIF Antibody) at dilution 1/45 (Original magnification: ×200)



Immunohistochemistry of paraffin-embedded Human thyroid cancer tissue using [TA364738] (PPIF Antibody) at dilution 1/45, treated with fusion protein. (Original magnification:  $\times 200$ )



Immunohistochemistry of paraffin-embedded Human liver cancer tissue using [TA364738] (PPIF Antibody) at dilution 1/45 (Original magnification:  $\times 200$ )



Immunohistochemistry of paraffin-embedded Human liver cancer tissue using [TA364738] (PPIF Antibody) at dilution 1/45, treated with fusion protein. (Original magnification:  $\times 200$ )