

Product datasheet for **TA364737**

Bonzo (CXCR6) Rabbit Polyclonal Antibody

Product data:

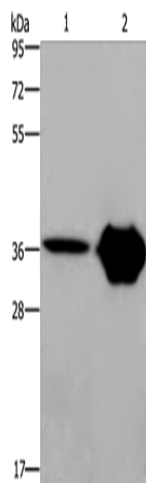
Product Type:	Primary Antibodies
Applications:	IHC, WB
Recommended Dilution:	WB: 500-2000 WB positive control: Human fetal brain and mouse brain tissue IHC: 50-200 Positive control: Human gastric cancer Predicted cell location: Cytoplasm
Reactivity:	Human, Mouse
Host:	Rabbit
Isotype:	IgG
Clonality:	Polyclonal
Immunogen:	Fusion protein of human CXCR6
Formulation:	pH7.4 PBS, 0.05% NaN ₃ , 40% Glycerol
Concentration:	lot specific
Purification:	Antigen affinity purification
Conjugation:	Unconjugated
Storage:	Store at -20°C.
Stability:	1 year
Predicted Protein Size:	39 kDa
Gene Name:	C-X-C motif chemokine receptor 6
Database Link:	Entrez Gene 10663 Human O00574
Background:	Bonzo (also designated STRL33.3) and BOB (brother of Bonzo; also designated GRP15) are seven-transmembrane, G protein-coupled receptors that are closely related to chemokine receptor family members. In conjunction with CD4, several chemokine receptors are known to serve as receptors for HIV-1 entry into cells. Bonzo and BOB are utilized by simian immunodeficiency virus (SIV), HIV-2 and M-tropic HIV-1 for cell entry. Bonzo and BOB are both expressed in lymphoid tissues, and BOB is also expressed in colon.



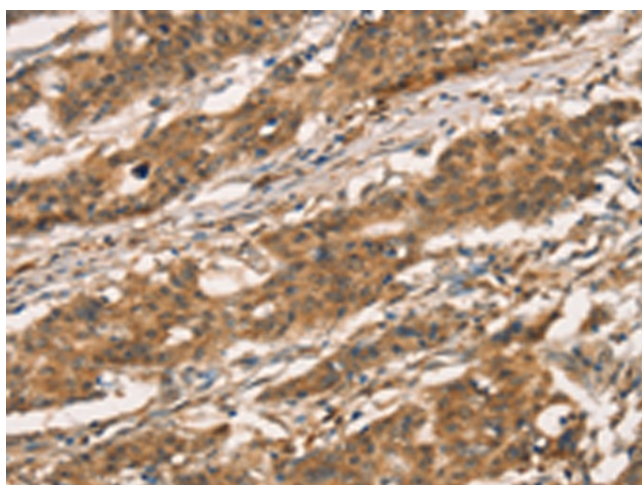
[View online »](#)

Synonyms: BONZO; CD186; CDw186; CXC-R6; CXCR-6; OTTHUMP00000209996; OTTHUMP00000209997; OTTHUMP00000209998; STRL33; TYMSTR

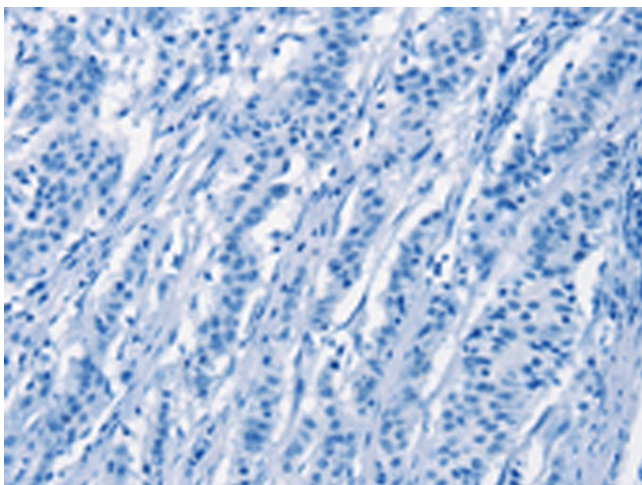
Product images:



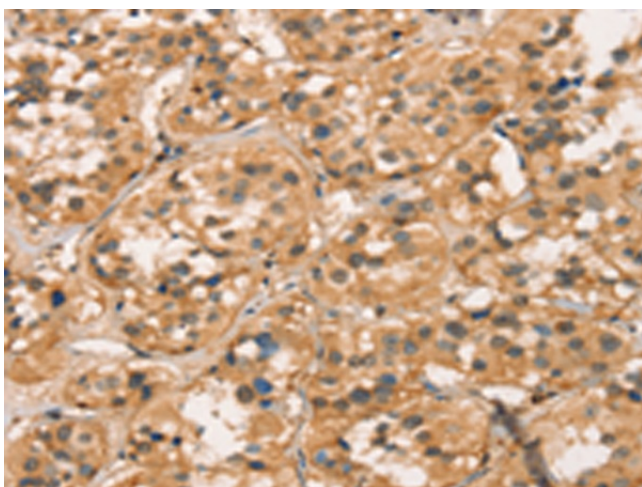
Gel: 8%SDS-PAGE
 Lysate: 40 µg
 Lane 1-2: Human fetal brain tissue
 mouse brain tissue
 Primary antibody: TA364737 (CXCR6 Antibody) at dilution 1/350
 Secondary antibody: Goat anti rabbit IgG at 1/8000 dilution
 Exposure time: 2 minutes



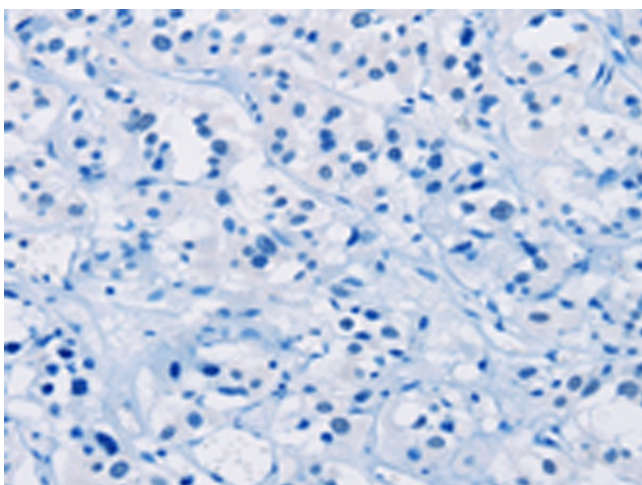
Immunohistochemistry of paraffin-embedded Human gastric cancer tissue using TA364737 (CXCR6 Antibody) at dilution 1/30 (Original magnification: ×200)



Immunohistochemistry of paraffin-embedded Human gastric cancer tissue using TA364737 (CXCR6 Antibody) at dilution 1/30, treated with fusion protein. (Original magnification: $\times 200$)



Immunohistochemistry of paraffin-embedded Human thyroid cancer tissue using TA364737 (CXCR6 Antibody) at dilution 1/30 (Original magnification: $\times 200$)



Immunohistochemistry of paraffin-embedded Human thyroid cancer tissue using TA364737 (CXCR6 Antibody) at dilution 1/30, treated with fusion protein. (Original magnification: $\times 200$)