

## Product datasheet for **TA364725S**

### Choline dehydrogenase (CHDH) Rabbit Polyclonal Antibody

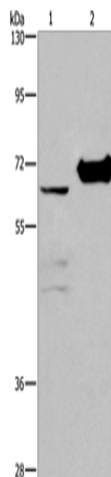
#### Product data:

Product Type:	Primary Antibodies
Applications:	IHC, WB
Recommended Dilution:	WB: 500-2000 WB positive control: 231 cells and mouse kidney tissue IHC: 25-100 Positive control: Human liver cancer Predicted cell location: Cytoplasm
Reactivity:	Human, Mouse, Rat
Host:	Rabbit
Isotype:	IgG
Clonality:	Polyclonal
Immunogen:	Fusion protein of human CHDH
Formulation:	pH7.4 PBS, 0.05% NaN <sub>3</sub> , 40% Glycerol
Purification:	Antigen affinity purification
Conjugation:	Unconjugated
Storage:	Store at -20°C.
Stability:	1 year
Predicted Protein Size:	65 kDa
Gene Name:	choline dehydrogenase
Database Link:	<a href="#">Entrez Gene 55349 Human Q8NE62</a>
Background:	The protein encoded by this gene is a choline dehydrogenase that localizes to the mitochondrion. Variations in this gene can affect susceptibility to choline deficiency. A few transcript variants have been found for this gene, but the full-length nature of only one has been characterized to date.
Synonyms:	CDH; CHD

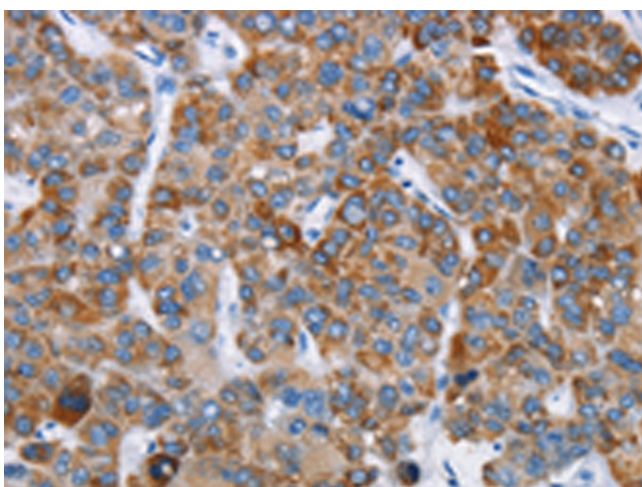


[View online »](#)

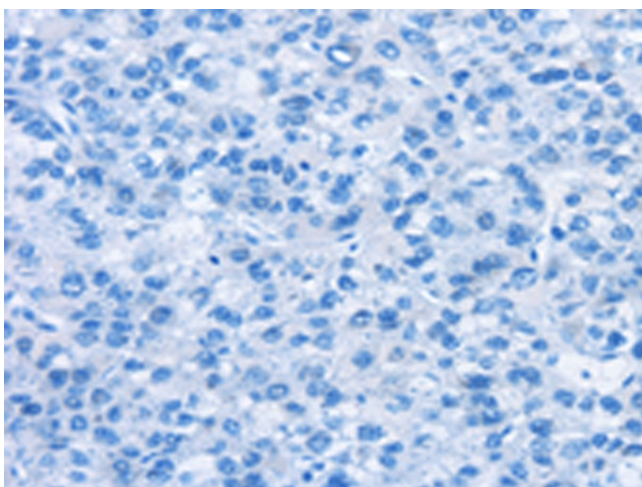
## Product images:



Gel: 10%SDS-PAGE  
Lysate: 40  $\mu$ g  
Lane 1-2: 231 cells  
mouse kidney tissue  
Primary antibody: [TA364725] (CHDH Antibody) at  
dilution 1/400  
Secondary antibody: Goat anti rabbit IgG at  
1/8000 dilution  
Exposure time: 20 seconds



Immunohistochemistry of paraffin-embedded  
Human liver cancer tissue using [TA364725]  
(CHDH Antibody) at dilution 1/20 (Original  
magnification:  $\times$ 200)



Immunohistochemistry of paraffin-embedded Human liver cancer tissue using [TA364725] (CHDH Antibody) at dilution 1/20, treated with fusion protein. (Original magnification: ×200)