

Product datasheet for **TA364716**

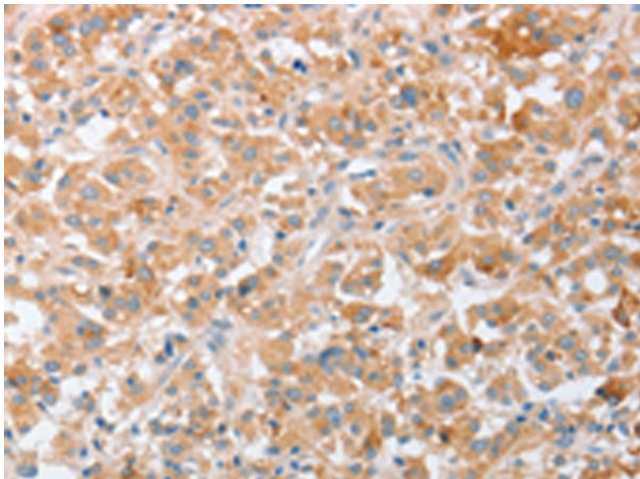
SIGLEC9 Rabbit Polyclonal Antibody

Product data:

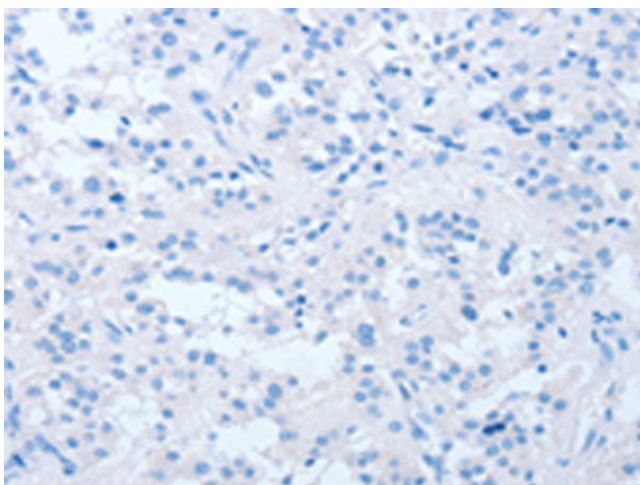
Product Type:	Primary Antibodies
Applications:	IHC
Recommended Dilution:	IHC: 50-200 Positive control: Human thyroid cancer Predicted cell location: Cytoplasm
Reactivity:	Human
Host:	Rabbit
Isotype:	IgG
Clonality:	Polyclonal
Immunogen:	Fusion protein of human SIGLEC9
Formulation:	pH7.4 PBS, 0.05% NaN ₃ , 40% Glycerol
Concentration:	lot specific
Purification:	Antigen affinity purification
Conjugation:	Unconjugated
Storage:	Store at -20°C.
Stability:	1 year
Gene Name:	sialic acid binding Ig like lectin 9
Database Link:	Entrez Gene 27180 Human Q9Y336
Background:	Sialic acid-binding Ig-like lectin 9 is a protein that in humans is encoded by the SIGLEC9 gene. Putative adhesion molecule that mediates sialic-acid dependent binding to cells. Preferentially binds to alpha-2,3- or alpha-2,6-linked sialic acid. The sialic acid recognition site may be masked by cis interactions with sialic acids on the same cell surface. Expressed by peripheral blood leukocytes (neutrophils and monocytes but not eosinophils).
Synonyms:	CD329; CDw329; OBBP-LIKE; Siglec-9



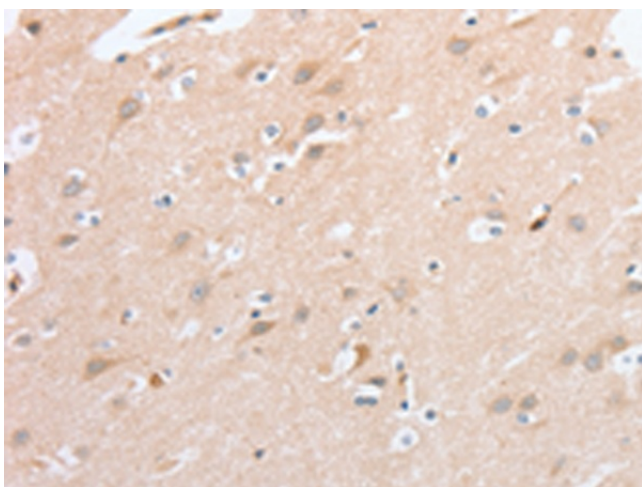
[View online »](#)

Product images:

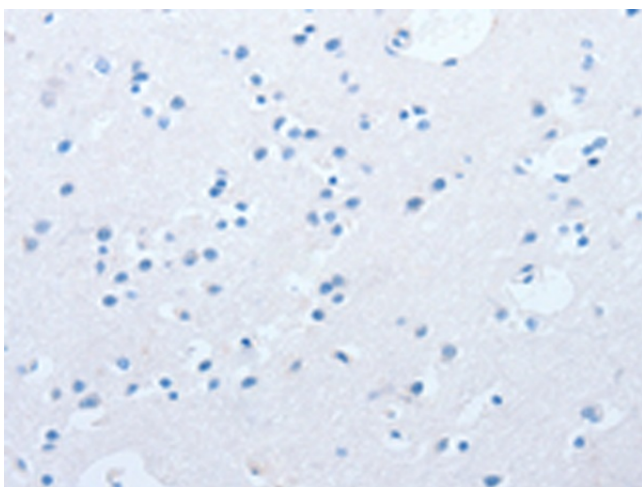
Immunohistochemistry of paraffin-embedded Human thyroid cancer tissue using TA364716 (SIGLEC9 Antibody) at dilution 1/40 (Original magnification: $\times 200$)



Immunohistochemistry of paraffin-embedded Human thyroid cancer tissue using TA364716 (SIGLEC9 Antibody) at dilution 1/40, treated with fusion protein. (Original magnification: $\times 200$)



Immunohistochemistry of paraffin-embedded Human brain tissue using TA364716 (SIGLEC9 Antibody) at dilution 1/40 (Original magnification: ×200)



Immunohistochemistry of paraffin-embedded Human brain tissue using TA364716 (SIGLEC9 Antibody) at dilution 1/40, treated with fusion protein. (Original magnification: ×200)