

## Product datasheet for **TA364704**

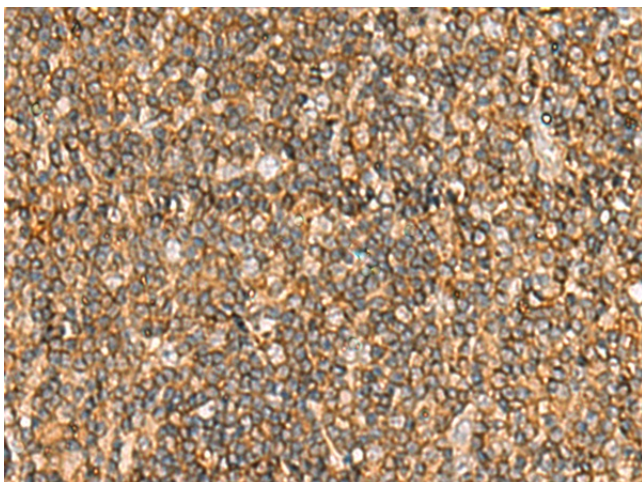
### **CARD12 (NLRC4) Rabbit Polyclonal Antibody**

#### **Product data:**

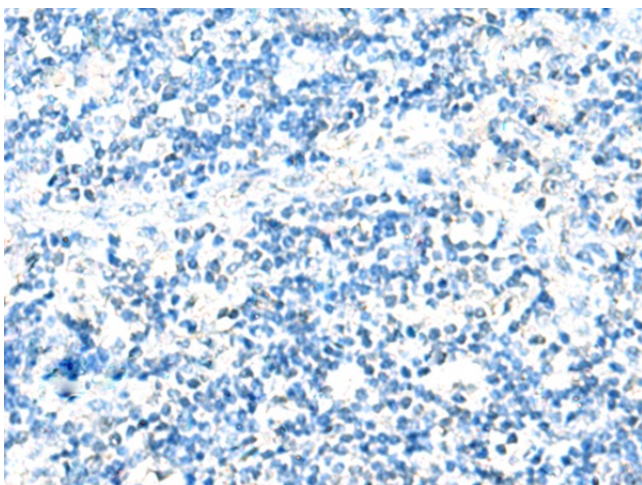
Product Type:	Primary Antibodies
Applications:	IHC
Recommended Dilution:	IHC: 50-200 Positive control: Human tonsil Predicted cell location: Cytoplasm
Reactivity:	Human
Host:	Rabbit
Isotype:	IgG
Clonality:	Polyclonal
Immunogen:	Fusion protein of human NLRC4
Formulation:	pH7.4 PBS, 0.05% NaN <sub>3</sub> , 40% Glycerol
Concentration:	lot specific
Purification:	Antigen affinity purification
Conjugation:	Unconjugated
Storage:	Store at -20°C.
Stability:	1 year
Gene Name:	NLR family, CARD domain containing 4
Database Link:	<a href="#">Entrez Gene 58484 Human Q9NPP4</a>
Background:	This gene encodes a member of the caspase recruitment domain-containing NLR family. Family members play essential roles in innate immune response to a wide range of pathogenic organisms, tissue damage and other cellular stresses. Mutations in this gene result in autoinflammation with infantile enterocolitis. Alternative splicing results in multiple transcript variants.
Synonyms:	CARD12; CLAN; CLAN1; CLANA; CLANB; CLANC; CLAND; CLR2.1; ipaf; OTTHUMP00000201170



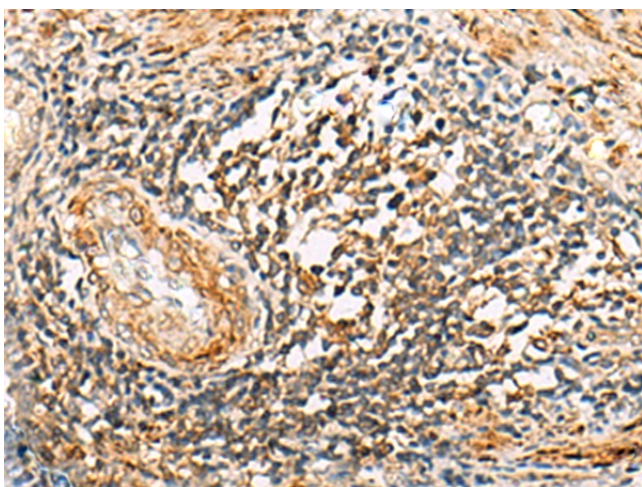
[View online »](#)

**Product images:**

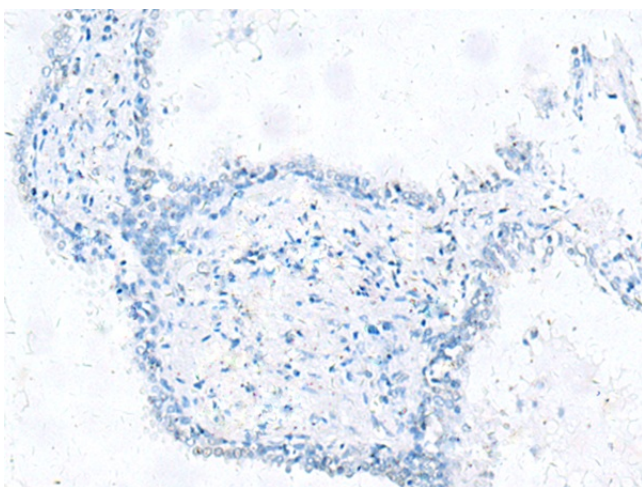
Immunohistochemistry of paraffin-embedded Human tonsil tissue using TA364704 (NLRC4 Antibody) at dilution 1/50 (Original magnification: ×200)



Immunohistochemistry of paraffin-embedded Human tonsil tissue using TA364704 (NLRC4 Antibody) at dilution 1/50, treated with fusion protein. (Original magnification: ×200)



Immunohistochemistry of paraffin-embedded Human prostate cancer tissue using TA364704 (NLRC4 Antibody) at dilution 1/50 (Original magnification:  $\times 200$ )



Immunohistochemistry of paraffin-embedded Human prostate cancer tissue using TA364704 (NLRC4 Antibody) at dilution 1/50, treated with fusion protein. (Original magnification:  $\times 200$ )