

Product datasheet for **TA364700**

Calnexin (CANX) Rabbit Polyclonal Antibody

Product data:

Product Type:	Primary Antibodies
Applications:	IHC, WB
Recommended Dilution:	WB: 500-2000 WB positive control: Hela cells and mouse liver tissue, 231 cells and human placenta tissue, human carcinoma of sigmoid tissue IHC: 50-200 Positive control: Human cervical cancer Predicted cell location: Cytoplasm
Reactivity:	Human, Mouse, Rat
Host:	Rabbit
Isotype:	IgG
Clonality:	Polyclonal
Immunogen:	Fusion protein of human CANX
Formulation:	pH7.4 PBS, 0.05% NaN ₃ , 40% Glycerol
Concentration:	lot specific
Purification:	Antigen affinity purification
Conjugation:	Unconjugated
Storage:	Store at -20°C.
Stability:	1 year
Predicted Protein Size:	68 kDa
Gene Name:	calnexin
Database Link:	Entrez Gene 821 Human P27824



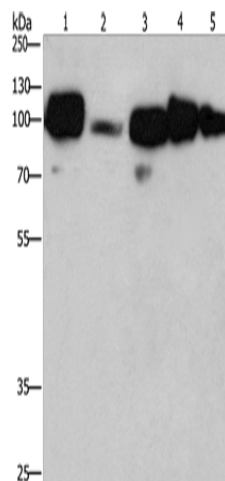
[View online »](#)

Background:

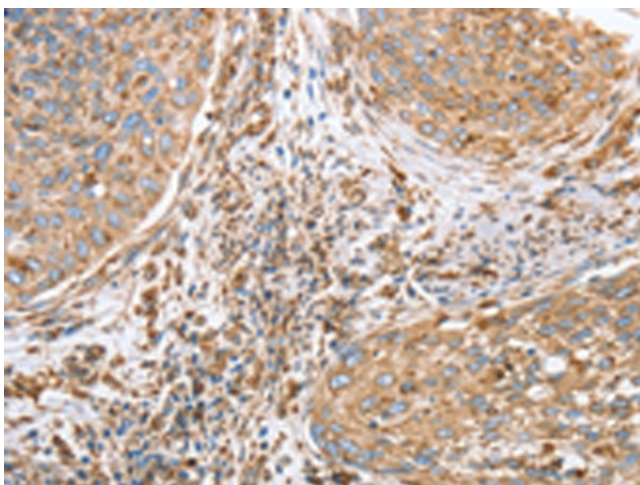
This gene encodes a member of the calnexin family of molecular chaperones. The encoded protein is a calcium-binding, endoplasmic reticulum (ER)-associated protein that interacts transiently with newly synthesized N-linked glycoproteins, facilitating protein folding and assembly. It may also play a central role in the quality control of protein folding by retaining incorrectly folded protein subunits within the ER for degradation. Alternatively spliced transcript variants encoding the same protein have been described.

Synonyms:

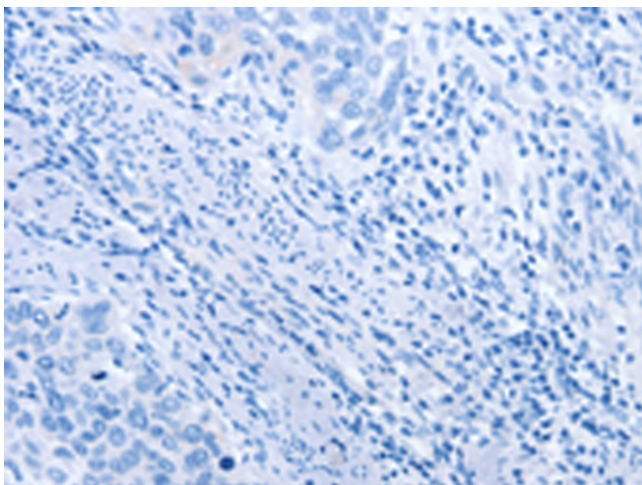
calnexin; CNX; FLJ26570; IP90; p90

Product images:

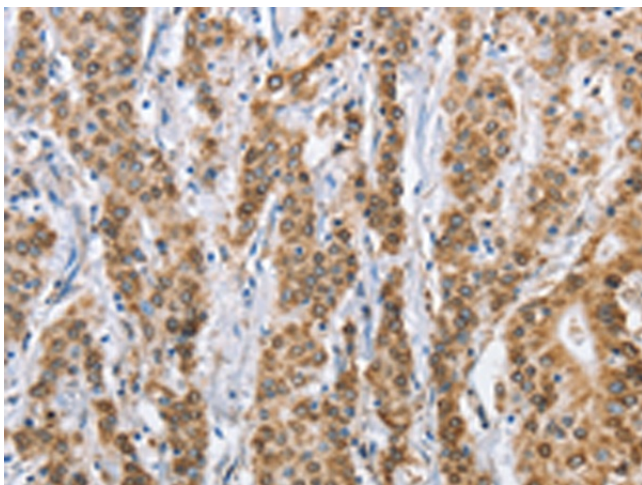
Gel: 8%SDS-PAGE
Lysate: 40 µg
Lane 1-5: HeLa cells
mouse liver tissue
231 cells
human placenta tissue
human carcinoma of sigmoid tissue
Primary antibody: TA364700 (CANX Antibody) at dilution 1/420
Secondary antibody: Goat anti rabbit IgG at 1/8000 dilution
Exposure time: 20 seconds



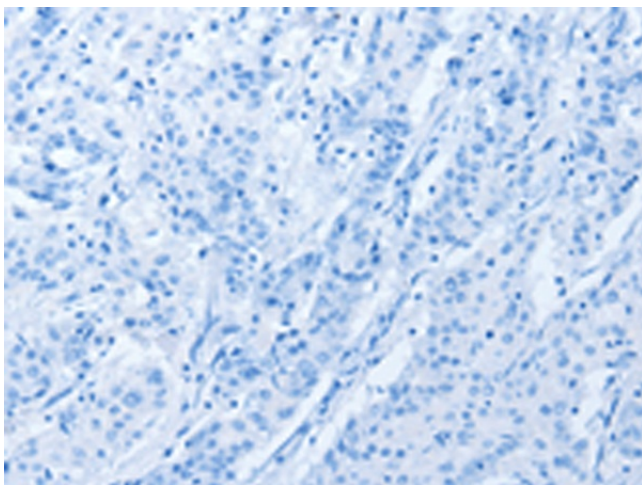
Immunohistochemistry of paraffin-embedded Human cervical cancer tissue using TA364700 (CANX Antibody) at dilution 1/40 (Original magnification: ×200)



Immunohistochemistry of paraffin-embedded Human cervical cancer tissue using TA364700 (CANX Antibody) at dilution 1/40, treated with fusion protein. (Original magnification: ×200)



Immunohistochemistry of paraffin-embedded Human gastric cancer tissue using TA364700 (CANX Antibody) at dilution 1/40 (Original magnification: ×200)



Immunohistochemistry of paraffin-embedded Human gastric cancer tissue using TA364700 (CANX Antibody) at dilution 1/40, treated with fusion protein. (Original magnification: ×200)