

## Product datasheet for **TA364697**

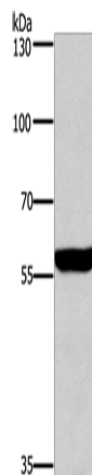
### Calcineurin A (PPP3CA) Rabbit Polyclonal Antibody

#### Product data:

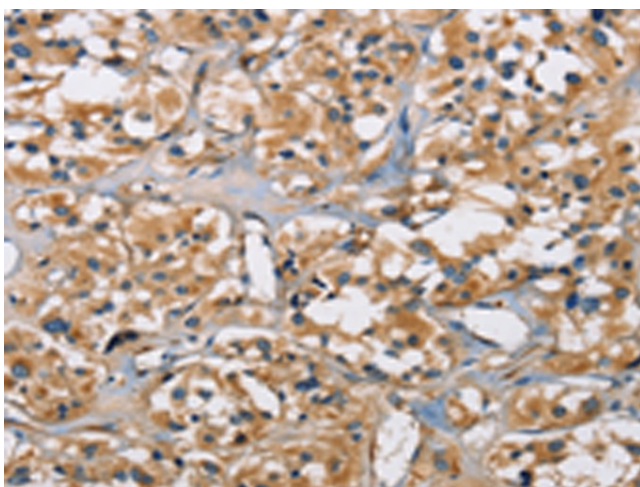
Product Type:	Primary Antibodies
Applications:	IHC, WB
Recommended Dilution:	WB: 500-2000 WB positive control: Mouse brain tissue IHC: 25-100 Positive control: Human thyroid cancer Predicted cell location: Cytoplasm
Reactivity:	Human, Mouse, Rat
Host:	Rabbit
Isotype:	IgG
Clonality:	Polyclonal
Immunogen:	Fusion protein of human PPP3CA
Formulation:	pH7.4 PBS, 0.05% NaN <sub>3</sub> , 40% Glycerol
Concentration:	lot specific
Purification:	Antigen affinity purification
Conjugation:	Unconjugated
Storage:	Store at -20°C.
Stability:	1 year
Predicted Protein Size:	59 kDa
Gene Name:	protein phosphatase 3 catalytic subunit alpha
Database Link:	<a href="#">Entrez Gene 5530 Human Q08209</a>
Background:	Protein phosphatase 3, catalytic subunit, alpha isozyme is a protein that in humans is encoded by the PPP3CA gene. Calcium-dependent, calmodulin-stimulated protein phosphatase. Many of the substrates contain a PxIxIT motif. This subunit may have a role in the calmodulin activation of calcineurin. Dephosphorylates DNM1L, HSPB1 and SSH1.
Synonyms:	CALN; CALNA; CALNA1; CCN1; CNA; CNA1; PPP2B



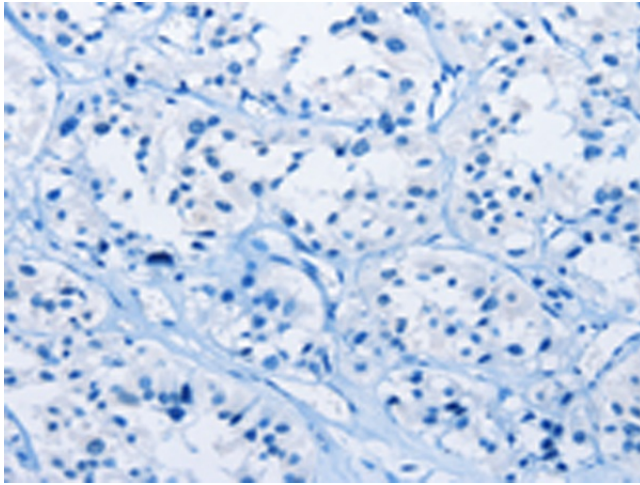
[View online »](#)

**Product images:**

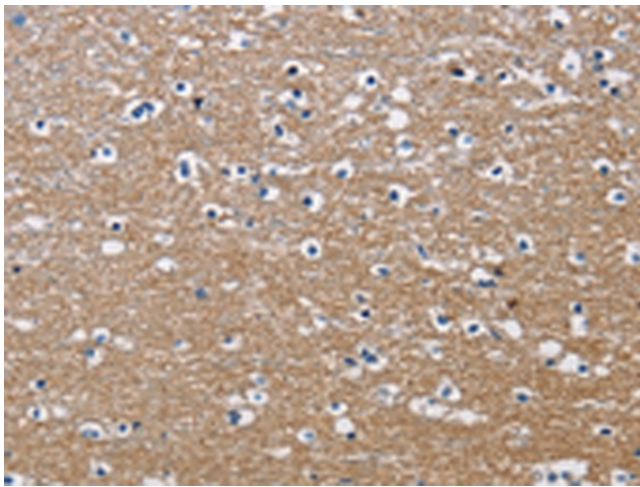
Gel: 6%SDS-PAGE  
Lysate: 40  $\mu$ g  
Lane: Mouse brain tissue  
Primary antibody: TA364697 (PPP3CA Antibody)  
at dilution 1/650  
Secondary antibody: Goat anti rabbit IgG at  
1/8000 dilution  
Exposure time: 1 second



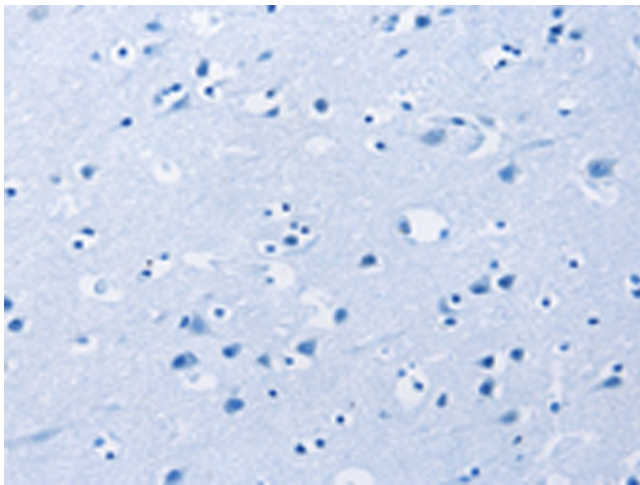
Immunohistochemistry of paraffin-embedded  
Human thyroid cancer tissue using TA364697  
(PPP3CA Antibody) at dilution 1/30 (Original  
magnification:  $\times$ 200)



Immunohistochemistry of paraffin-embedded Human thyroid cancer tissue using TA364697 (PPP3CA Antibody) at dilution 1/30, treated with fusion protein. (Original magnification:  $\times 200$ )



Immunohistochemistry of paraffin-embedded Human brain tissue using TA364697 (PPP3CA Antibody) at dilution 1/30 (Original magnification:  $\times 200$ )



Immunohistochemistry of paraffin-embedded Human brain tissue using TA364697 (PPP3CA Antibody) at dilution 1/30, treated with fusion protein. (Original magnification:  $\times 200$ )