

## Product datasheet for **TA364680**

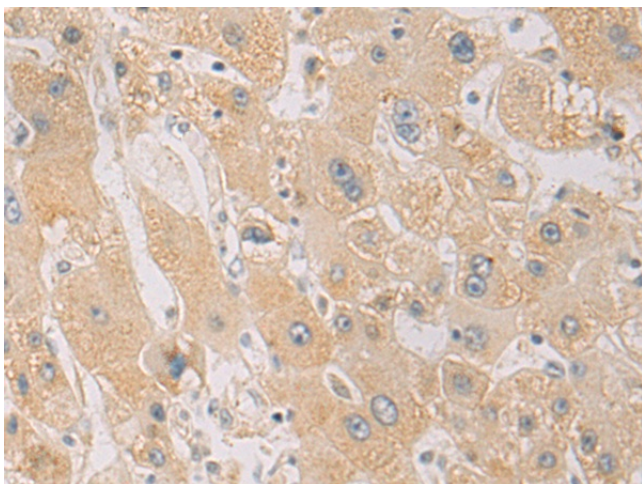
### PD L2 (PDCD1LG2) Rabbit Polyclonal Antibody

#### Product data:

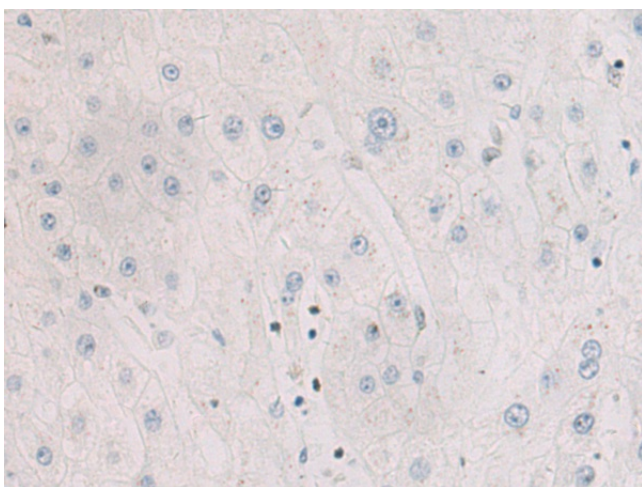
Product Type:	Primary Antibodies
Applications:	IHC
Recommended Dilution:	IHC: 50-200 Positive control: Human liver cancer Predicted cell location: Cytoplasm
Reactivity:	Human
Host:	Rabbit
Isotype:	IgG
Clonality:	Polyclonal
Immunogen:	Fusion protein of human PDCD1LG2
Formulation:	pH7.4 PBS, 0.05% NaN <sub>3</sub> , 40% Glycerol
Concentration:	lot specific
Purification:	Antigen affinity purification
Conjugation:	Unconjugated
Storage:	Store at -20°C.
Stability:	1 year
Gene Name:	programmed cell death 1 ligand 2
Database Link:	<a href="#">Entrez Gene 80380 Human Q9BQ51</a>
Background:	Involved in the costimulatory signal, essential for T-cell proliferation and IFNG production in a PDCD1-independent manner. Interaction with PDCD1 inhibits T-cell proliferation by blocking cell cycle progression and cytokine production (By similarity).
Synonyms:	B7-DC; B7DC; bA574F11.2; Btdc; CD273; MGC142238; MGC142240; PD-L2; PDCD1L2; PDL2



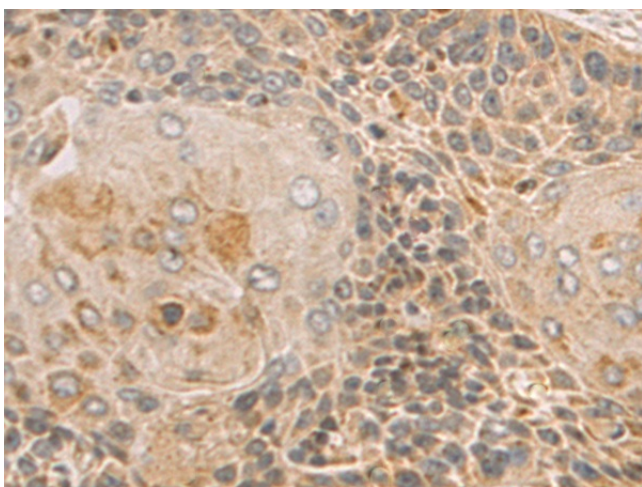
[View online »](#)

**Product images:**

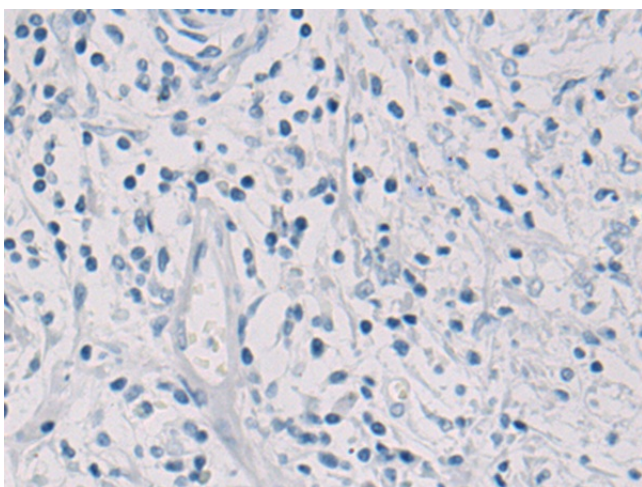
Immunohistochemistry of paraffin-embedded Human liver cancer tissue using TA364680 (PDCD1LG2 Antibody) at dilution 1/85 (Original magnification:  $\times 200$ )



Immunohistochemistry of paraffin-embedded Human liver cancer tissue using TA364680 (PDCD1LG2 Antibody) at dilution 1/85, treated with fusion protein. (Original magnification:  $\times 200$ )



Immunohistochemistry of paraffin-embedded Human esophagus cancer tissue using TA364680 (PDCD1LG2 Antibody) at dilution 1/85 (Original magnification:  $\times 200$ )



Immunohistochemistry of paraffin-embedded Human esophagus cancer tissue using TA364680 (PDCD1LG2 Antibody) at dilution 1/85, treated with fusion protein. (Original magnification:  $\times 200$ )