

Product datasheet for **TA364677**

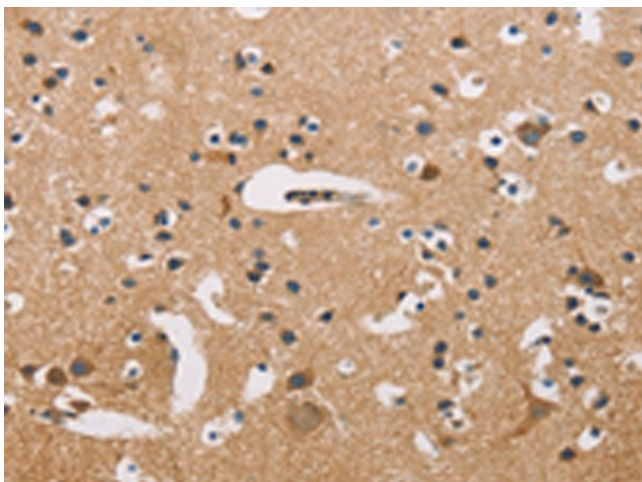
ATP2C1 Rabbit Polyclonal Antibody

Product data:

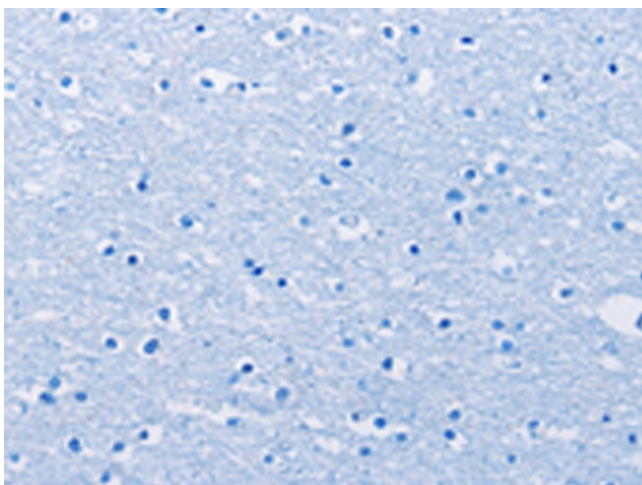
Product Type:	Primary Antibodies
Applications:	IHC
Recommended Dilution:	IHC: 50-200 Positive control: Human brain Predicted cell location: Cytoplasm
Reactivity:	Human, Mouse, Rat
Host:	Rabbit
Isotype:	IgG
Clonality:	Polyclonal
Immunogen:	Fusion protein of human ATP2C1
Formulation:	pH7.4 PBS, 0.05% NaN ₃ , 40% Glycerol
Concentration:	lot specific
Purification:	Antigen affinity purification
Conjugation:	Unconjugated
Storage:	Store at -20°C.
Stability:	1 year
Gene Name:	ATPase secretory pathway Ca ²⁺ transporting 1
Database Link:	Entrez Gene 27032 Human P98194
Background:	The protein encoded by this gene belongs to the family of P-type cation transport ATPases. This magnesium-dependent enzyme catalyzes the hydrolysis of ATP coupled with the transport of calcium ions. Defects in this gene cause Hailey-Hailey disease, an autosomal dominant disorder. Alternatively spliced transcript variants encoding different isoforms have been identified.
Synonyms:	ATP2C1A; BCPM; HHD; hSPCA1; HUSSY-28; KIAA1347; PMR1; PMR1L; SPCA1



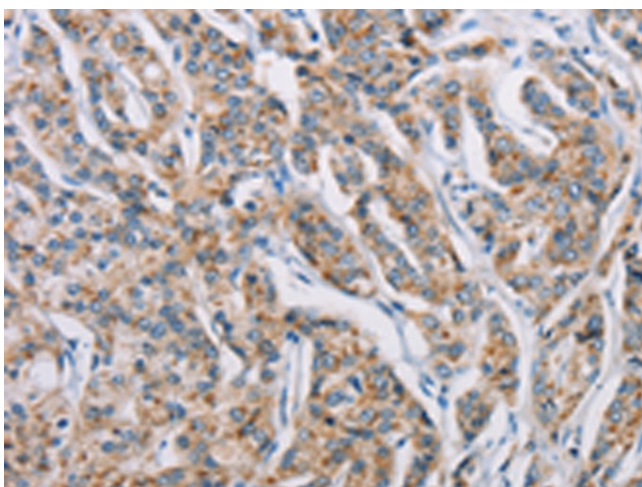
[View online »](#)

Product images:

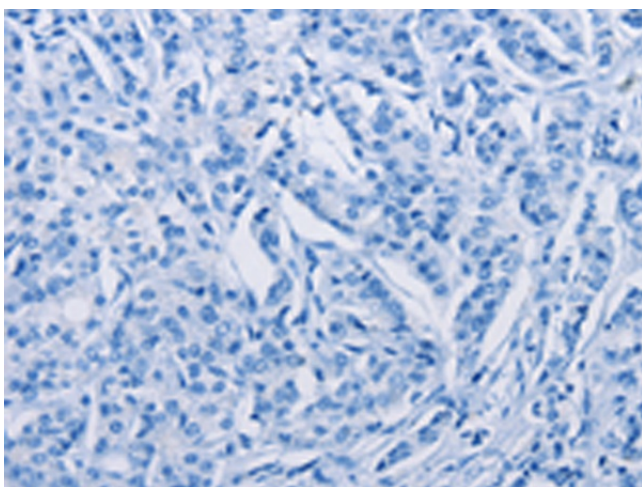
Immunohistochemistry of paraffin-embedded Human brain tissue using TA364677 (ATP2C1 Antibody) at dilution 1/50 (Original magnification: ×200)



Immunohistochemistry of paraffin-embedded Human brain tissue using TA364677 (ATP2C1 Antibody) at dilution 1/50, treated with fusion protein. (Original magnification: ×200)



Immunohistochemistry of paraffin-embedded Human prostate cancer tissue using TA364677 (ATP2C1 Antibody) at dilution 1/50 (Original magnification: $\times 200$)



Immunohistochemistry of paraffin-embedded Human prostate cancer tissue using TA364677 (ATP2C1 Antibody) at dilution 1/50, treated with fusion protein. (Original magnification: $\times 200$)