

## Product datasheet for **TA364674S**

### Pancreatic alpha amylase (AMY2A) Rabbit Polyclonal Antibody

#### Product data:

Product Type:	Primary Antibodies
Applications:	IHC, WB
Recommended Dilution:	WB: 1000-5000 WB positive control: Mouse pancreas tissue IHC: 50-200 Positive control: Human lung cancer Predicted cell location: Cytoplasm
Reactivity:	Human, Mouse
Host:	Rabbit
Isotype:	IgG
Clonality:	Polyclonal
Immunogen:	Fusion protein of human AMY2A
Formulation:	pH7.4 PBS, 0.05% NaN <sub>3</sub> , 40% Glycerol
Purification:	Antigen affinity purification
Conjugation:	Unconjugated
Storage:	Store at -20°C.
Stability:	1 year
Predicted Protein Size:	58 kDa
Gene Name:	amylase, alpha 2A (pancreatic)
Database Link:	<a href="#">Entrez Gene 279 Human P04746</a>
Background:	Amylases are secreted proteins that hydrolyze 1,4-alpha-glucoside bonds in oligosaccharides and polysaccharides, and thus catalyze the first step in digestion of dietary starch and glycogen. The human genome has a cluster of several amylase genes that are expressed at high levels in either salivary gland or pancreas. This gene encodes an amylase isoenzyme produced by the pancreas.
Synonyms:	alpha-amylase; AMY2; AMY2B; glycogenase; PA

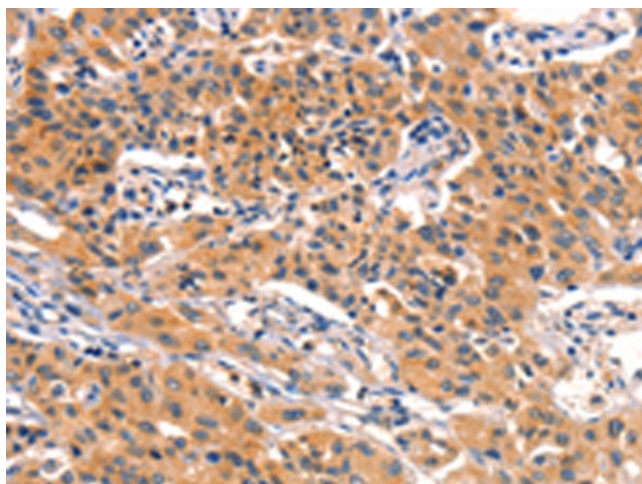


[View online »](#)

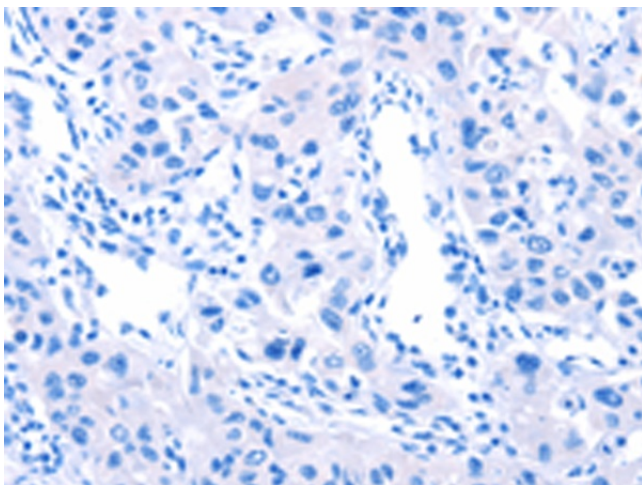
## Product images:



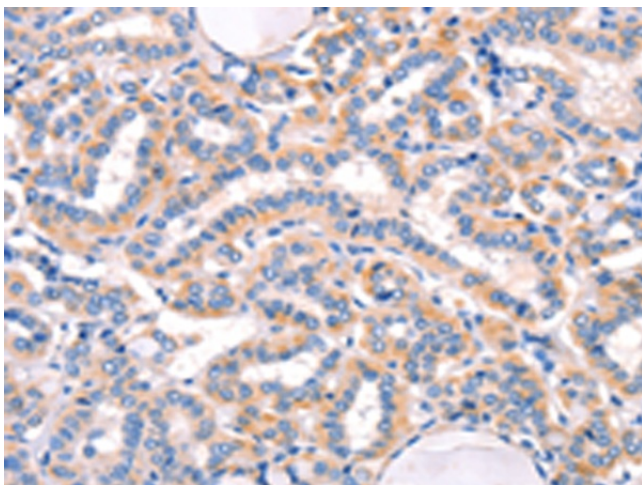
Gel: 15%SDS-PAGE  
Lysate: 40  $\mu$ g  
Lane: Mouse pancreas tissue  
Primary antibody: [TA364674] (AMY2A Antibody)  
at dilution 1/1400  
Secondary antibody: Goat anti rabbit IgG at  
1/8000 dilution  
Exposure time: 1 second



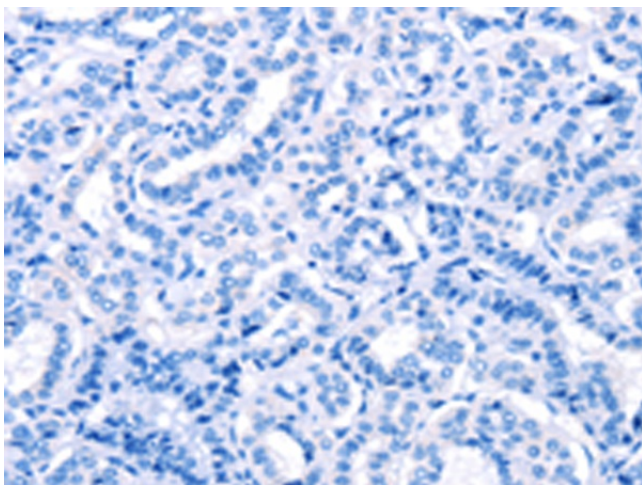
Immunohistochemistry of paraffin-embedded  
Human lung cancer tissue using [TA364674]  
(AMY2A Antibody) at dilution 1/50 (Original  
magnification:  $\times$ 200)



Immunohistochemistry of paraffin-embedded Human lung cancer tissue using [TA364674] (AMY2A Antibody) at dilution 1/50, treated with fusion protein. (Original magnification: ×200)



Immunohistochemistry of paraffin-embedded Human thyroid cancer tissue using [TA364674] (AMY2A Antibody) at dilution 1/50 (Original magnification: ×200)



Immunohistochemistry of paraffin-embedded Human thyroid cancer tissue using [TA364674] (AMY2A Antibody) at dilution 1/50, treated with fusion protein. (Original magnification: ×200)