

Product datasheet for **TA364673S**

Alkaline Phosphatase (ALPP) Rabbit Polyclonal Antibody

Product data:

Product Type:	Primary Antibodies
Applications:	IHC, WB
Recommended Dilution:	WB: 1000-5000 WB positive control: HepG2 cells and human placenta tissue IHC: 50-200 Positive control: Human lung cancer Predicted cell location: Cell membrane and Cytoplasm
Reactivity:	Human
Host:	Rabbit
Isotype:	IgG
Clonality:	Polyclonal
Immunogen:	Fusion protein of human ALPP
Formulation:	pH7.4 PBS, 0.05% NaN ₃ , 40% Glycerol
Purification:	Antigen affinity purification
Conjugation:	Unconjugated
Storage:	Store at -20°C.
Stability:	1 year
Predicted Protein Size:	58 kDa
Gene Name:	alkaline phosphatase, placental
Database Link:	Entrez Gene 250 Human P05187



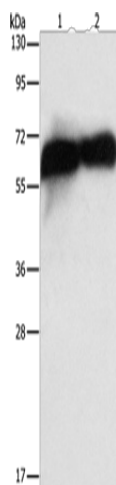
[View online »](#)

Background:

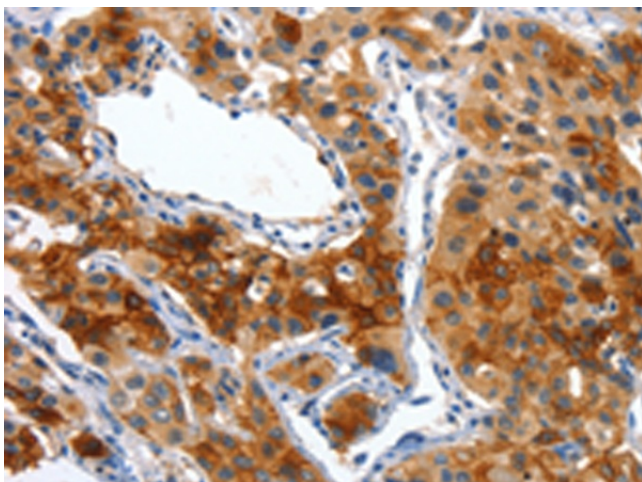
There are at least four distinct but related alkaline phosphatases: intestinal, placental, placental-like, and liver/bone/kidney (tissue non-specific). The first three are located together on chromosome 2 while the tissue non-specific form is located on chromosome 1. The product of this gene is a membrane bound glycosylated enzyme, also referred to as the heat stable form, that is expressed primarily in the placenta although it is closely related to the intestinal form of the enzyme as well as to the placental-like form. The coding sequence for this form of alkaline phosphatase is unique in that the 3' untranslated region contains multiple copies of an Alu family repeat. In addition, this gene is polymorphic and three common alleles (type 1, type 2 and type 3) for this form of alkaline phosphatase have been well characterized.

Synonyms:

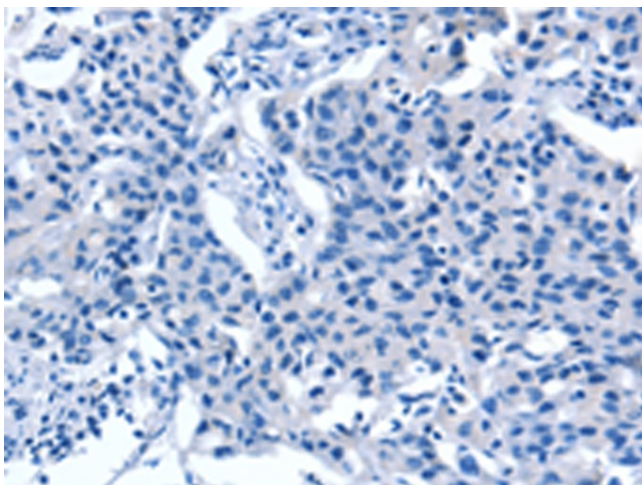
ALP; FLJ61142; glycerophosphatase; PALP; PLAP; PLAP-1

Product images:

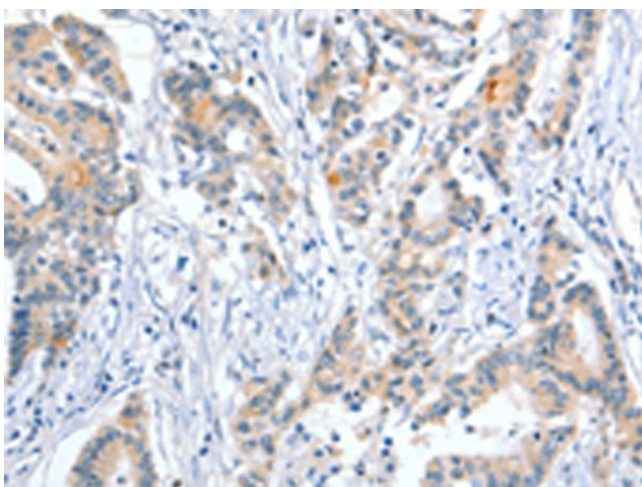
Gel: 15%SDS-PAGE
Lysate: 40 µg
Lane 1-2: HepG2 cells
human placenta tissue
Primary antibody: [TA364673] (ALPP Antibody) at
dilution 1/1450
Secondary antibody: Goat anti rabbit IgG at
1/8000 dilution
Exposure time: 10 seconds



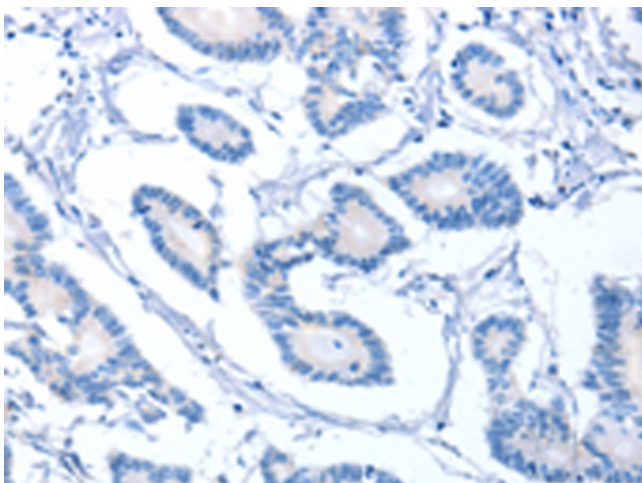
Immunohistochemistry of paraffin-embedded
Human lung cancer tissue using [TA364673]
(ALPP Antibody) at dilution 1/50 (Original
magnification: ×200)



Immunohistochemistry of paraffin-embedded Human lung cancer tissue using [TA364673] (ALPP Antibody) at dilution 1/50, treated with fusion protein. (Original magnification: $\times 200$)



Immunohistochemistry of paraffin-embedded Human colon cancer tissue using [TA364673] (ALPP Antibody) at dilution 1/50 (Original magnification: $\times 200$)



Immunohistochemistry of paraffin-embedded Human colon cancer tissue using [TA364673] (ALPP Antibody) at dilution 1/50, treated with fusion protein. (Original magnification: $\times 200$)