

Product datasheet for **TA364668**

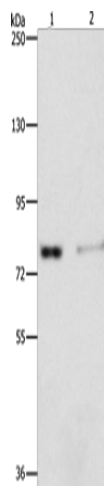
ASAH2 Rabbit Polyclonal Antibody

Product data:

Product Type:	Primary Antibodies
Applications:	IHC, WB
Recommended Dilution:	WB: 200-1000 WB positive control: Human fetal kidney tissue and 293T cells IHC: 25-100 Positive control: Human lung cancer Predicted cell location: Cytoplasm
Reactivity:	Human, Mouse, Rat
Host:	Rabbit
Isotype:	IgG
Clonality:	Polyclonal
Immunogen:	Fusion protein of human ASAH2
Formulation:	pH7.4 PBS, 0.05% NaN ₃ , 40% Glycerol
Concentration:	lot specific
Purification:	Antigen affinity purification
Conjugation:	Unconjugated
Storage:	Store at -20°C.
Stability:	1 year
Predicted Protein Size:	86 kDa
Gene Name:	N-acylsphingosine amidohydrolase (non-lysosomal ceramidase) 2
Database Link:	Entrez Gene 56624 Human Q9NR71
Background:	Ceramidases (EC 3.5.1.23), such as ASAH2, catalyze hydrolysis of the N-acyl linkage of ceramide, a second messenger in a variety of cellular events, to produce sphingosine. Sphingosine exerts both mitogenic and apoptosis-inducing activities, and its phosphorylated form functions as an intra- and intercellular second messenger.
Synonyms:	BCDase; hCD; HNAC1; LCDase; MGC129777; N-CDase; NCDase



[View online »](#)

Product images:

Gel: 10%SDS-PAGE

Lysate: 40 μ g

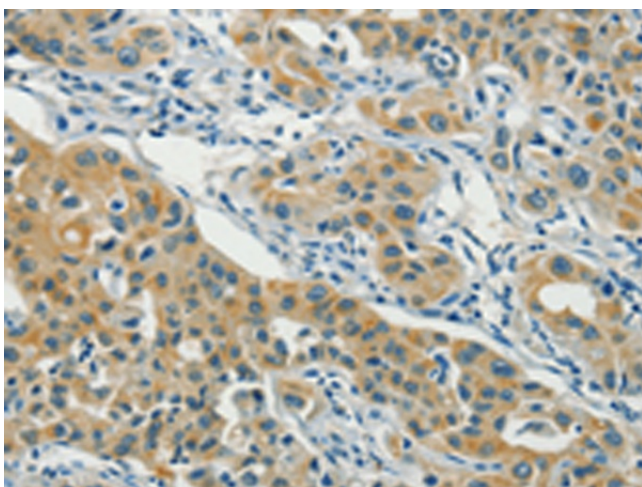
Lane 1-2: Human fetal kidney tissue

293T cells

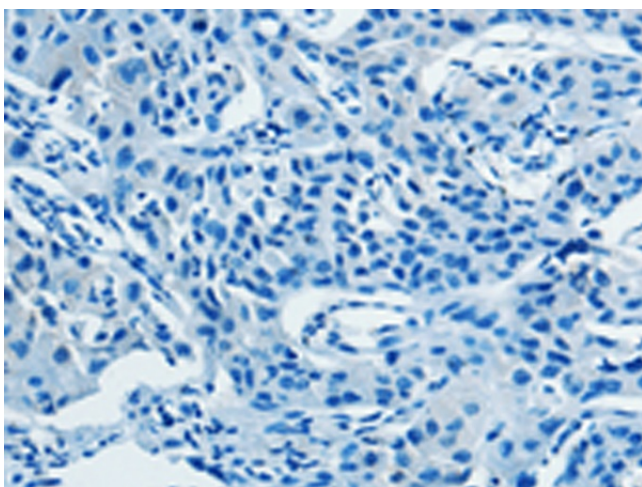
Primary antibody: TA364668 (ASAH2 Antibody) at dilution 1/240

Secondary antibody: Goat anti rabbit IgG at 1/8000 dilution

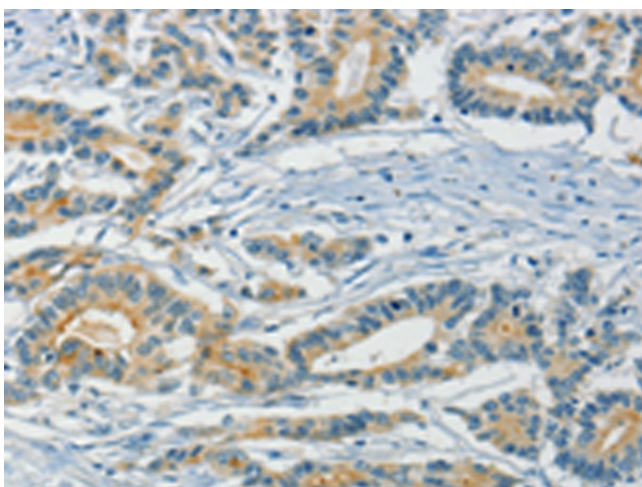
Exposure time: 5 minutes



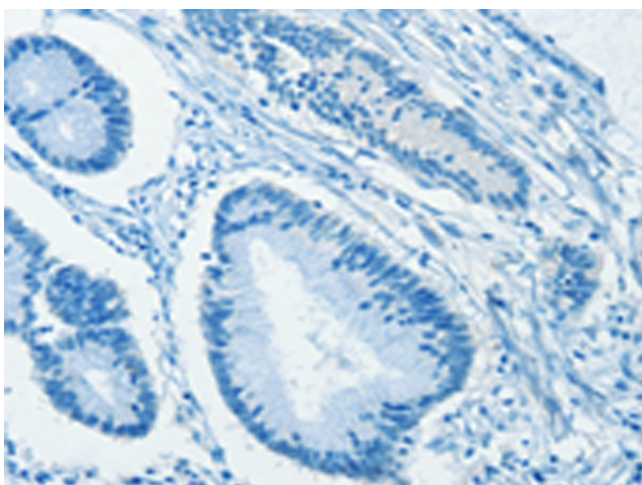
Immunohistochemistry of paraffin-embedded Human lung cancer tissue using TA364668 (ASAH2 Antibody) at dilution 1/40 (Original magnification: \times 200)



Immunohistochemistry of paraffin-embedded Human lung cancer tissue using TA364668 (ASAH2 Antibody) at dilution 1/40, treated with fusion protein. (Original magnification: $\times 200$)



Immunohistochemistry of paraffin-embedded Human colon cancer tissue using TA364668 (ASAH2 Antibody) at dilution 1/40 (Original magnification: $\times 200$)



Immunohistochemistry of paraffin-embedded Human colon cancer tissue using TA364668 (ASAH2 Antibody) at dilution 1/40, treated with fusion protein. (Original magnification: $\times 200$)