

Product datasheet for **TA364663**

PIP5K2 alpha (PIP4K2A) Rabbit Polyclonal Antibody

Product data:

Product Type:	Primary Antibodies
Applications:	IHC, WB
Recommended Dilution:	WB: 500-2000 WB positive control: K562 cells IHC: 50-200 Positive control: Human gastric cancer Predicted cell location: Cytoplasm
Reactivity:	Human, Mouse, Rat
Host:	Rabbit
Isotype:	IgG
Clonality:	Polyclonal
Immunogen:	Fusion protein of human PIP4K2A
Formulation:	pH7.4 PBS, 0.05% NaN ₃ , 40% Glycerol
Concentration:	lot specific
Purification:	Antigen affinity purification
Conjugation:	Unconjugated
Storage:	Store at -20°C.
Stability:	1 year
Predicted Protein Size:	46 kDa
Gene Name:	phosphatidylinositol-5-phosphate 4-kinase type 2 alpha
Database Link:	Entrez Gene 5305 Human P48426



[View online »](#)

Background:

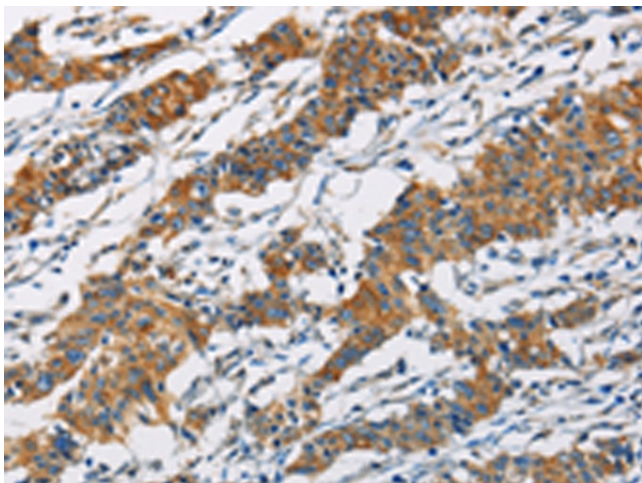
Phosphatidylinositol-5,4-bisphosphate, the precursor to second messengers of the phosphoinositide signal transduction pathways, is thought to be involved in the regulation of secretion, cell proliferation, differentiation, and motility. The protein encoded by this gene is one of a family of enzymes capable of catalyzing the phosphorylation of phosphatidylinositol-5-phosphate on the fourth hydroxyl of the myo-inositol ring to form phosphatidylinositol-5,4-bisphosphate. The amino acid sequence of this enzyme does not show homology to other kinases, but the recombinant protein does exhibit kinase activity. This gene is a member of the phosphatidylinositol-5-phosphate 4-kinase family.

Synonyms:

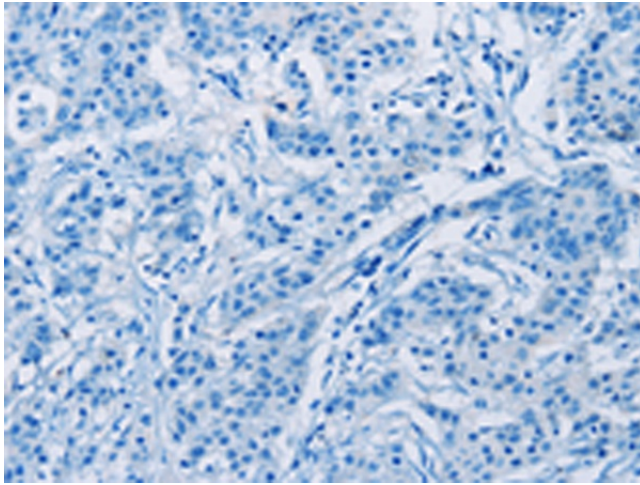
1-phosphatidylinositol-4-phosphate-5-kinase; FLJ13267; PI5P4KA; PIP4KII-alpha; PIP5K2; PIP5K2A; PIP5KII-alpha; PIP5KIIA; PIP5KIIalpha; PIP5KIII; PIPK

Product images:

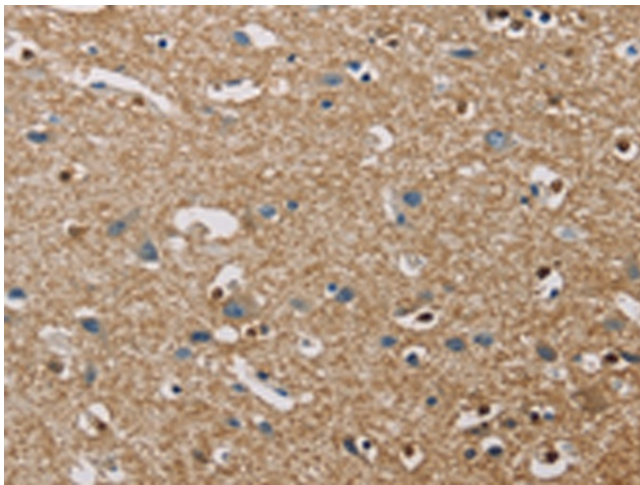
Gel: 10%SDS-PAGE
Lysate: 40 µg
Lane: K562 cells
Primary antibody: TA364663 (PIP4K2A Antibody) at dilution 1/950
Secondary antibody: Goat anti rabbit IgG at 1/8000 dilution
Exposure time: 1 minute



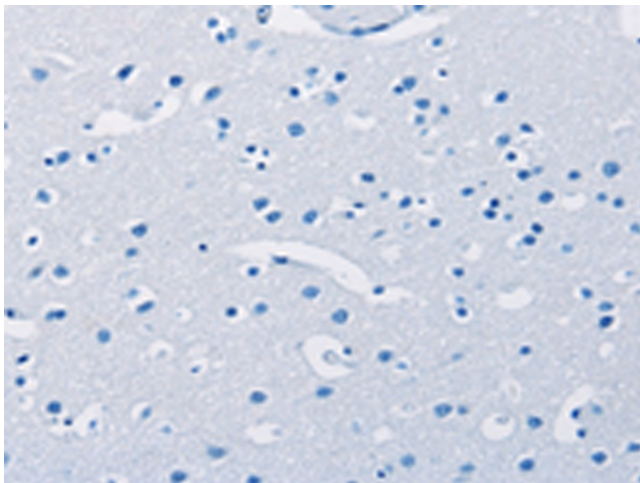
Immunohistochemistry of paraffin-embedded Human gastric cancer tissue using TA364663 (PIP4K2A Antibody) at dilution 1/40 (Original magnification: ×200)



Immunohistochemistry of paraffin-embedded Human gastric cancer tissue using TA364663 (PIP4K2A Antibody) at dilution 1/40, treated with fusion protein. (Original magnification: $\times 200$)



Immunohistochemistry of paraffin-embedded Human brain tissue using TA364663 (PIP4K2A Antibody) at dilution 1/40 (Original magnification: $\times 200$)



Immunohistochemistry of paraffin-embedded Human brain tissue using TA364663 (PIP4K2A Antibody) at dilution 1/40, treated with fusion protein. (Original magnification: $\times 200$)