

## Product datasheet for **TA364661**

### GCN2 (EIF2AK4) Rabbit Polyclonal Antibody

#### Product data:

Product Type:	Primary Antibodies
Applications:	IHC, WB
Recommended Dilution:	WB: 500-2000 WB positive control: 293T cell IHC: 50-200 Positive control: Human breast cancer Predicted cell location: cytoplasm
Reactivity:	Human, Mouse
Host:	Rabbit
Isotype:	IgG
Clonality:	Polyclonal
Immunogen:	Fusion protein of human EIF2AK4
Formulation:	pH7.4 PBS, 0.05% NaN <sub>3</sub> , 40% Glycerol
Concentration:	lot specific
Purification:	Antigen affinity purification
Conjugation:	Unconjugated
Storage:	Store at -20°C.
Stability:	1 year
Predicted Protein Size:	187 kDa
Gene Name:	eukaryotic translation initiation factor 2 alpha kinase 4
Database Link:	<a href="#">Entrez Gene 440275 Human Q9P2K8</a>
Background:	This gene encodes a member of a family of kinases that phosphorylate the alpha subunit of eukaryotic translation initiation factor-2 (EIF2), resulting in the downregulation of protein synthesis. The encoded protein responds to amino acid deprivation by binding uncharged transfer RNAs. It may also be activated by glucose deprivation and viral infection. Mutations in this gene have been found in individuals suffering from autosomal recessive pulmonary venoocclusive-disease-2.

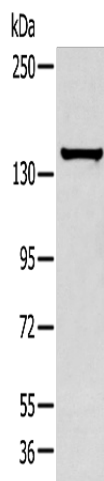


[View online »](#)

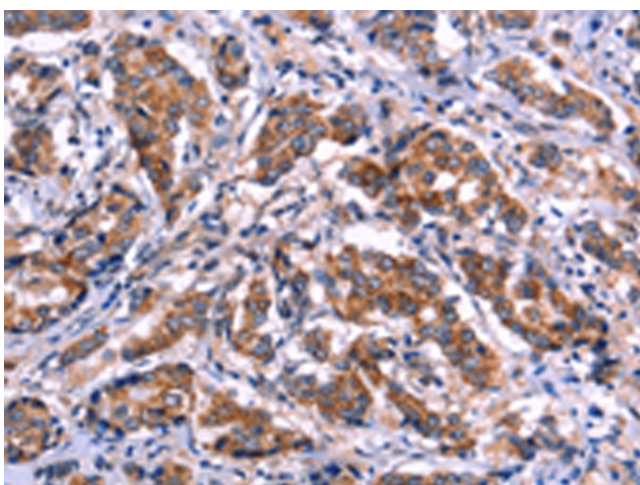


**Synonyms:** GCN2; KIAA1338

**Product images:**

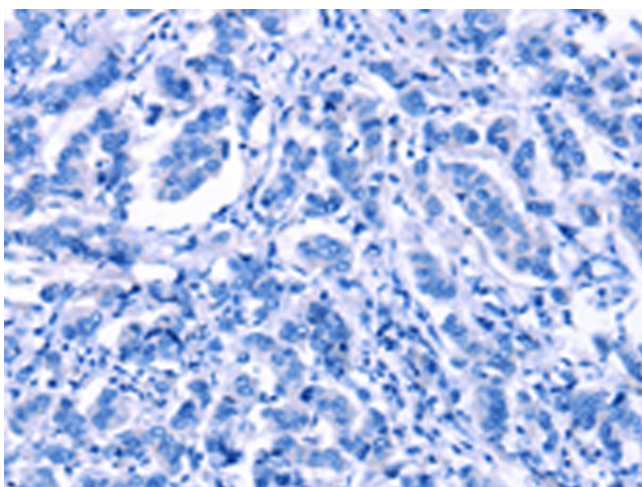


Gel: 6%SDS-PAGE  
Lysate: 40 µg  
Lane: 293T cell  
Primary antibody: TA364661 (EIF2AK4 Antibody)  
at dilution 1/350  
Secondary antibody: Goat anti rabbit IgG at  
1/8000 dilution  
Exposure time: 15 seconds

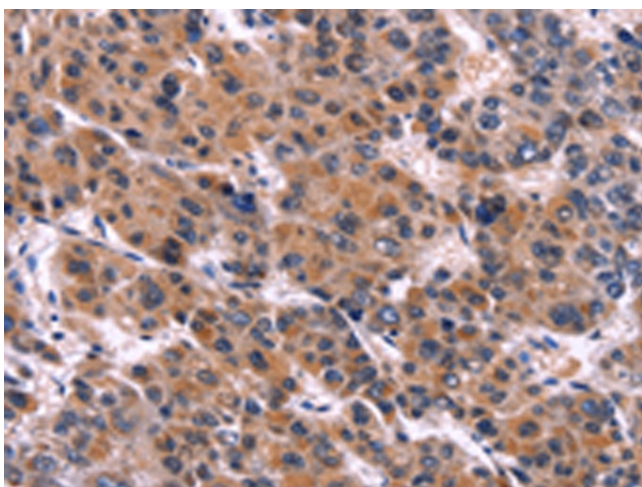


Immunohistochemistry of paraffin-embedded  
Human breast cancer tissue using TA364661  
(EIF2AK4 Antibody) at dilution 1/50 (Original  
magnification: ×200)

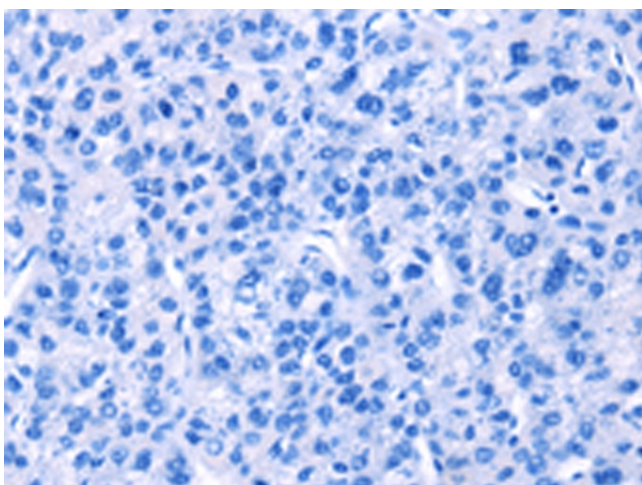




Immunohistochemistry of paraffin-embedded Human breast cancer tissue using TA364661 (EIF2AK4 Antibody) at dilution 1/50, treated with fusion protein. (Original magnification: ×200)



Immunohistochemistry of paraffin-embedded Human liver cancer tissue using TA364661 (EIF2AK4 Antibody) at dilution 1/50 (Original magnification: ×200)



Immunohistochemistry of paraffin-embedded Human liver cancer tissue using TA364661 (EIF2AK4 Antibody) at dilution 1/50, treated with fusion protein. (Original magnification: ×200)