

Product datasheet for **TA364660**

ketohexokinase (KHK) Rabbit Polyclonal Antibody

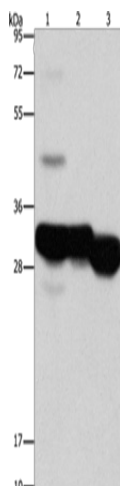
Product data:

Product Type:	Primary Antibodies
Applications:	WB
Recommended Dilution:	WB: 1000-5000 WB positive control: Mouse liver and kidney tissue, human fetal liver tissue
Reactivity:	Human, Mouse
Host:	Rabbit
Isotype:	IgG
Clonality:	Polyclonal
Immunogen:	Fusion protein of human KHK
Formulation:	pH7.4 PBS, 0.05% NaN ₃ , 40% Glycerol
Concentration:	lot specific
Purification:	Antigen affinity purification
Conjugation:	Unconjugated
Storage:	Store at -20°C.
Stability:	1 year
Predicted Protein Size:	33 kDa
Gene Name:	ketohexokinase
Database Link:	Entrez Gene 3795 Human P50053
Background:	This gene encodes ketohexokinase that catalyzes conversion of fructose to fructose-1-phosphate. The product of this gene is the first enzyme with a specialized pathway that catabolizes dietary fructose. Alternatively spliced transcript variants encoding different isoforms have been identified.
Synonyms:	ketohexokinase



[View online »](#)

Product images:



Gel: 15%SDS-PAGE
Lysate: 40 μ g
Lane 1-3: Mouse liver tissue
Mouse kidney tissue
human fetal liver tissue
Primary antibody: TA364660 (KHK Antibody) at
dilution 1/1250
Secondary antibody: Goat anti rabbit IgG at
1/8000 dilution
Exposure time: 3 seconds