

Product datasheet for **TA364658**

GPIP137 (CAPRIN1) Rabbit Polyclonal Antibody

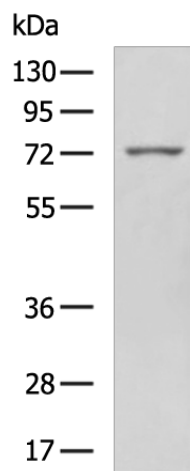
Product data:

Product Type:	Primary Antibodies
Applications:	IHC, WB
Recommended Dilution:	WB: 500-2000 WB positive control: RAW264.7 cell lysate IHC: 50-200 Positive control: Human cervical cancer Predicted cell location: Cytoplasm
Reactivity:	Human, Mouse, Rat
Host:	Rabbit
Isotype:	IgG
Clonality:	Polyclonal
Immunogen:	Fusion protein of human CAPRIN1
Formulation:	pH7.4 PBS, 0.05% NaN ₃ , 40% Glycerol
Concentration:	lot specific
Purification:	Antigen affinity purification
Conjugation:	Unconjugated
Storage:	Store at -20°C.
Stability:	1 year
Predicted Protein Size:	78 kDa
Gene Name:	cell cycle associated protein 1
Database Link:	Entrez Gene 4076 Human Q14444
Background:	May regulate the transport and translation of mRNAs of proteins involved in synaptic plasticity in neurons and cell proliferation and migration in multiple cell types. Binds directly and selectively to MYC and CCND2 RNAs. In neuronal cells, directly binds to several mRNAs associated with RNA granules, including BDNF, CAMK2A, CREB1, MAP2, NTRK2 mRNAs, as well as to GRIN1 and KPNB1 mRNAs, but not to rRNAs.
Synonyms:	caprin-1; GPI-p137; GPIAP1; GPIP137; M11S1; p137GPI

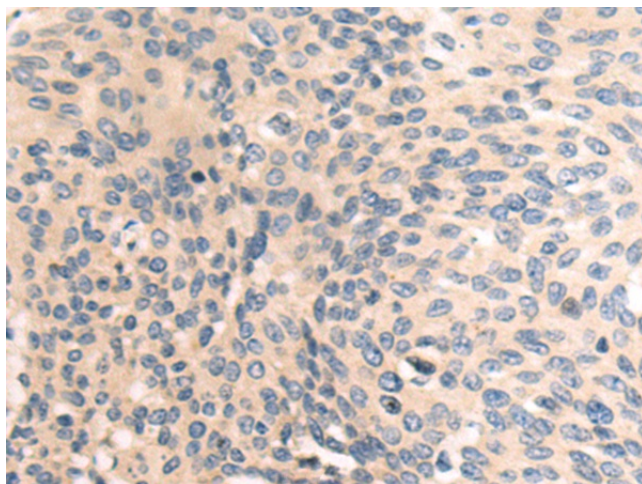


[View online »](#)

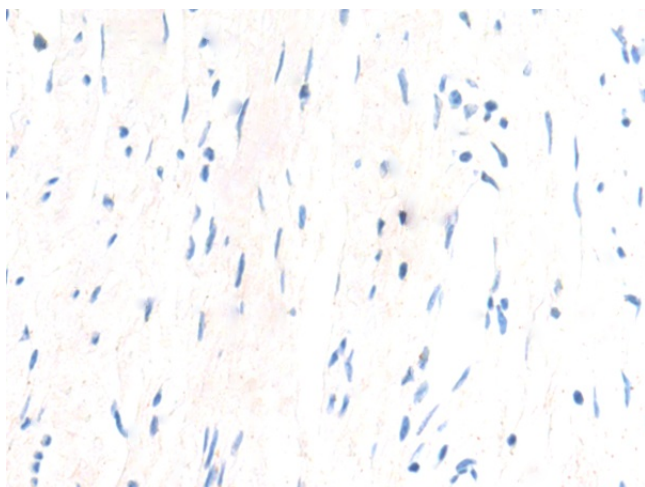
Product images:



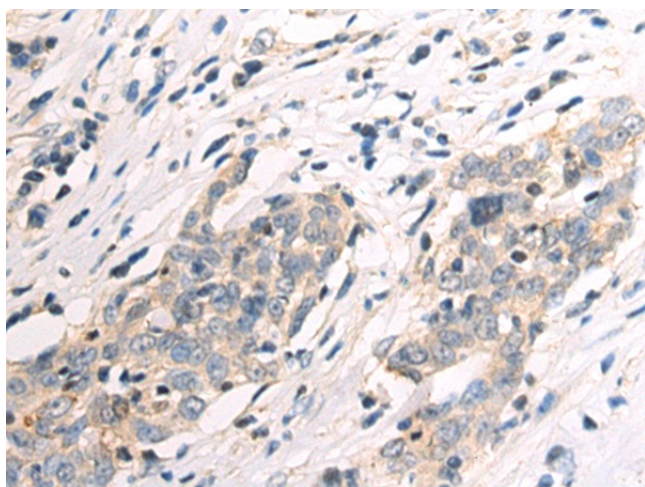
Gel: 6%SDS-PAGE
Lysate: 40 μ g
Lane: RAW264.7 cell lysate
Primary antibody: TA364658 (CAPRIN1 Antibody) at dilution 1/600
Secondary antibody: Goat anti rabbit IgG at 1/5000 dilution
Exposure time: 10 seconds



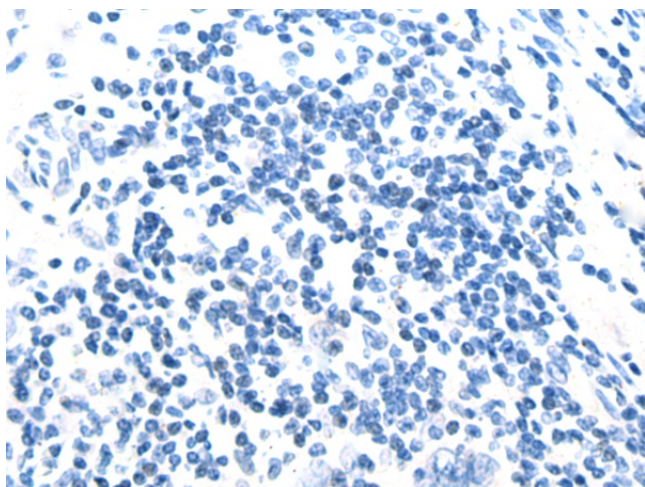
Immunohistochemistry of paraffin-embedded Human cervical cancer tissue using TA364658 (CAPRIN1 Antibody) at dilution 1/50 (Original magnification: \times 200)



Immunohistochemistry of paraffin-embedded Human cervical cancer tissue using TA364658 (CAPRIN1 Antibody) at dilution 1/50, treated with fusion protein. (Original magnification: $\times 200$)



Immunohistochemistry of paraffin-embedded Human esophagus cancer tissue using TA364658 (CAPRIN1 Antibody) at dilution 1/50 (Original magnification: $\times 200$)



Immunohistochemistry of paraffin-embedded Human esophagus cancer tissue using TA364658 (CAPRIN1 Antibody) at dilution 1/50, treated with fusion protein. (Original magnification: $\times 200$)