

Product datasheet for **TA364645**

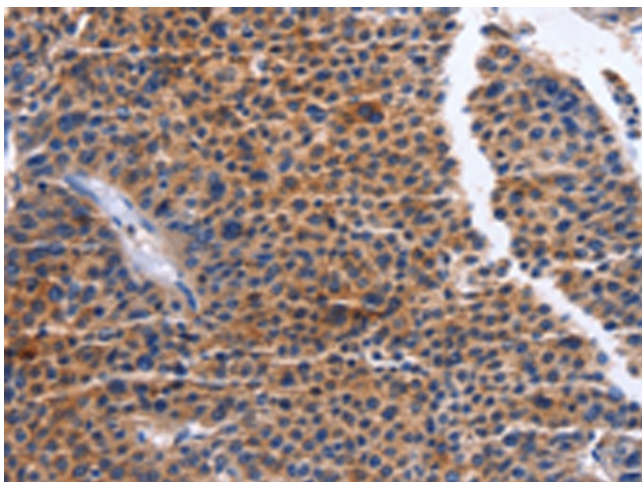
MAP3K13 Rabbit Polyclonal Antibody

Product data:

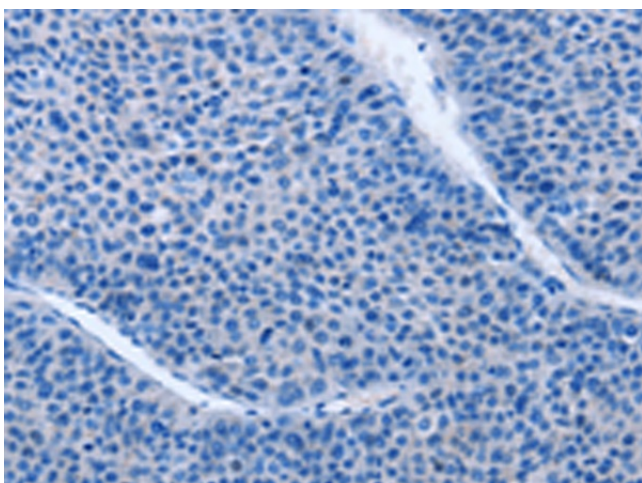
Product Type:	Primary Antibodies
Applications:	IHC
Recommended Dilution:	IHC: 25-100 Positive control: Human liver cancer Predicted cell location: Cytoplasm
Reactivity:	Human, Mouse
Host:	Rabbit
Isotype:	IgG
Clonality:	Polyclonal
Immunogen:	Fusion protein of human MAP3K13
Formulation:	pH7.4 PBS, 0.05% NaN ₃ , 40% Glycerol
Concentration:	lot specific
Purification:	Antigen affinity purification
Conjugation:	Unconjugated
Storage:	Store at -20°C.
Stability:	1 year
Gene Name:	mitogen-activated protein kinase kinase kinase 13
Database Link:	Entrez Gene 9175 Human O43283
Background:	The protein encoded by this gene is a member of serine/threonine protein kinase family. This kinase contains a dual leucine-zipper motif, and has been shown to form dimers/oligomers through its leucine-zipper motif. This kinase can phosphorylate and activate MAPK8/JNK, MAP2K7/MKK7, which suggests a role in the JNK signaling pathway.
Synonyms:	LZK; MEKK13; MGC133196; MLK; OTTHUMP00000210397



[View online »](#)

Product images:

Immunohistochemistry of paraffin-embedded Human liver cancer tissue using TA364645 (MAP3K13 Antibody) at dilution 1/20 (Original magnification: $\times 200$)



Immunohistochemistry of paraffin-embedded Human liver cancer tissue using TA364645 (MAP3K13 Antibody) at dilution 1/20, treated with fusion protein. (Original magnification: $\times 200$)