

## Product datasheet for **TA364639**

### Lactoferrin (LTF) Rabbit Polyclonal Antibody

#### Product data:

|                         |  |
|-------------------------|--|
| Product Type:           | Primary Antibodies   |
| Applications:           | IHC, WB  |
| Recommended Dilution:   | WB: 200-1000<br>WB positive control: Human prostate tissue<br>IHC: 50-200<br>Positive control: Human breast cancer<br>Predicted cell location: Cytoplasm |
| Reactivity:             | Human  |
| Host:                   | Rabbit   |
| Isotype:                | IgG  |
| Clonality:              | Polyclonal   |
| Immunogen:              | Fusion protein of human LTF  |
| Formulation:            | pH7.4 PBS, 0.05% NaN <sub>3</sub> , 40% Glycerol   |
| Concentration:          | lot specific   |
| Purification:           | Antigen affinity purification  |
| Conjugation:            | Unconjugated   |
| Storage:                | Store at -20°C.  |
| Stability:              | 1 year   |
| Predicted Protein Size: | 78 kDa   |
| Gene Name:              | lactotransferrin   |
| Database Link:          | <a href="#">Entrez Gene 4057 Human P02788</a>  |



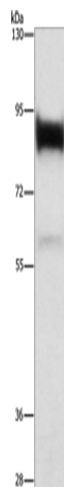
[View online »](#)

**Background:**

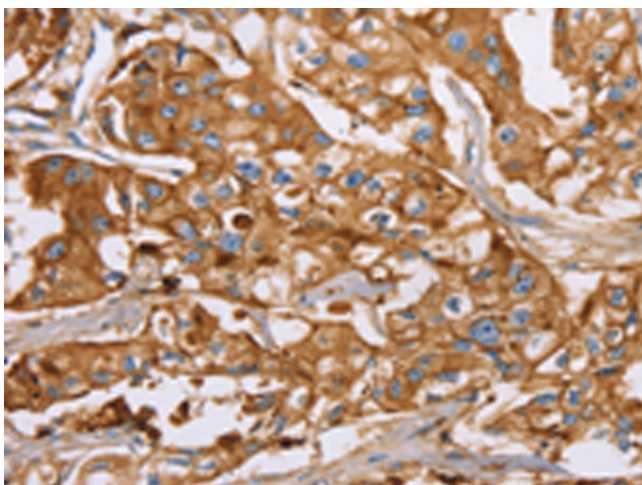
This gene is a member of the transferrin family of genes and its protein product is found in the secondary granules of neutrophils. The protein is a major iron-binding protein in milk and body secretions with an antimicrobial activity, making it an important component of the non-specific immune system. The protein demonstrates a broad spectrum of properties, including regulation of iron homeostasis, host defense against a broad range of microbial infections, anti-inflammatory activity, regulation of cellular growth and differentiation and protection against cancer development and metastasis. Alternatively spliced transcript variants encoding different isoforms have been found for this gene.

**Synonyms:**

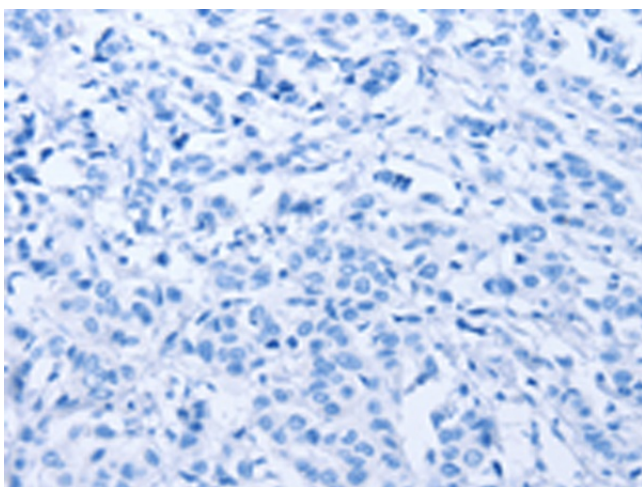
GIG12; HLF2; lactoferrin; lactotransferrin; LF; Talalactoferrin

**Product images:**


Gel: 6%SDS-PAGE  
 Lysate: 40 µg  
 Lane: Human prostate tissue  
 Primary antibody: TA364639 (LTF Antibody) at dilution 1/400  
 Secondary antibody: Goat anti rabbit IgG at 1/8000 dilution  
 Exposure time: 5 seconds



Immunohistochemistry of paraffin-embedded Human breast cancer tissue using TA364639 (LTF Antibody) at dilution 1/40 (Original magnification: ×200)



Immunohistochemistry of paraffin-embedded Human breast cancer tissue using TA364639 (LTF Antibody) at dilution 1/40, treated with fusion protein. (Original magnification:  $\times 200$ )