

## Product datasheet for **TA364638S**

### TWF2 Rabbit Polyclonal Antibody

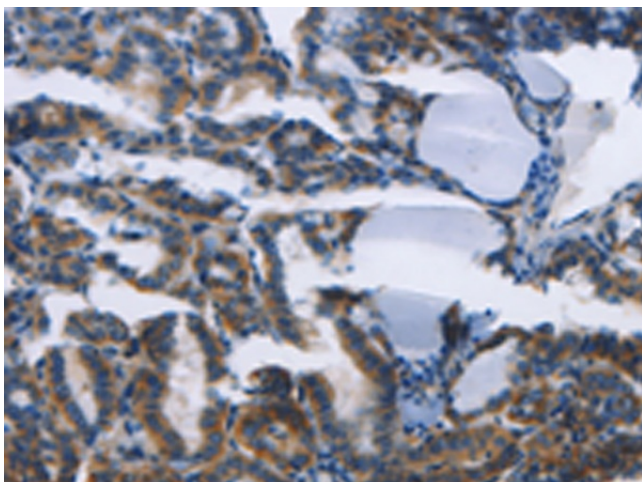
#### Product data:

Product Type:	Primary Antibodies
Applications:	IHC
Recommended Dilution:	IHC: 25-100 Positive control: Human thyroid cancer Predicted cell location: Cytoplasm
Reactivity:	Human, Mouse
Host:	Rabbit
Isotype:	IgG
Clonality:	Polyclonal
Immunogen:	Fusion protein of human TWF2
Formulation:	pH7.4 PBS, 0.05% NaN <sub>3</sub> , 40% Glycerol
Purification:	Antigen affinity purification
Conjugation:	Unconjugated
Storage:	Store at -20°C.
Stability:	1 year
Gene Name:	twinfilin actin binding protein 2
Database Link:	<a href="#">Entrez Gene 11344 Human</a> <a href="#">Q6IBS0</a>
Background:	The protein encoded by this gene was identified by its interaction with the catalytic domain of protein kinase C-zeta. The encoded protein contains an actin-binding site and an ATP-binding site. It is most closely related to twinfilin (PTK9), a conserved actin monomer-binding protein.
Synonyms:	A6r; A6RP; hA6RP; MSTP011; PTK9L

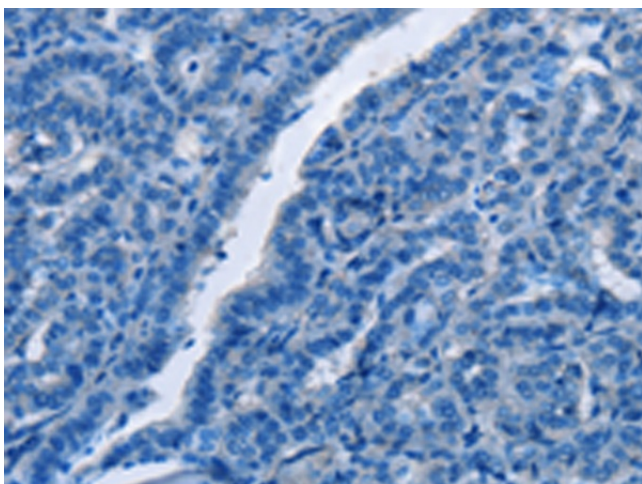


[View online »](#)

## Product images:



Immunohistochemistry of paraffin-embedded Human thyroid cancer tissue using [TA364638] (TWF2 Antibody) at dilution 1/30 (Original magnification:  $\times 200$ )



Immunohistochemistry of paraffin-embedded Human thyroid cancer tissue using [TA364638] (TWF2 Antibody) at dilution 1/30, treated with fusion protein. (Original magnification:  $\times 200$ )