

Product datasheet for **TA364631**

FACL4 (ACSL4) Rabbit Polyclonal Antibody

Product data:

Product Type:	Primary Antibodies
Applications:	IHC, WB
Recommended Dilution:	WB: 500-2000 WB positive control: Hepg2, hela and 293T cells, human fetal kidney tissue IHC: 25-100 Positive control: Human liver cancer Predicted cell location: Cytoplasm
Reactivity:	Human, Mouse, Rat
Host:	Rabbit
Isotype:	IgG
Clonality:	Polyclonal
Immunogen:	Fusion protein of human ACSL4
Formulation:	pH7.4 PBS, 0.05% NaN ₃ , 40% Glycerol
Concentration:	lot specific
Purification:	Antigen affinity purification
Conjugation:	Unconjugated
Storage:	Store at -20°C.
Stability:	1 year
Predicted Protein Size:	79 kDa
Gene Name:	acyl-CoA synthetase long-chain family member 4
Database Link:	Entrez Gene 2182 Human O60488



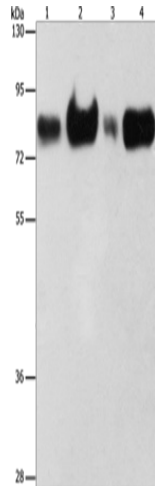
[View online »](#)

Background:

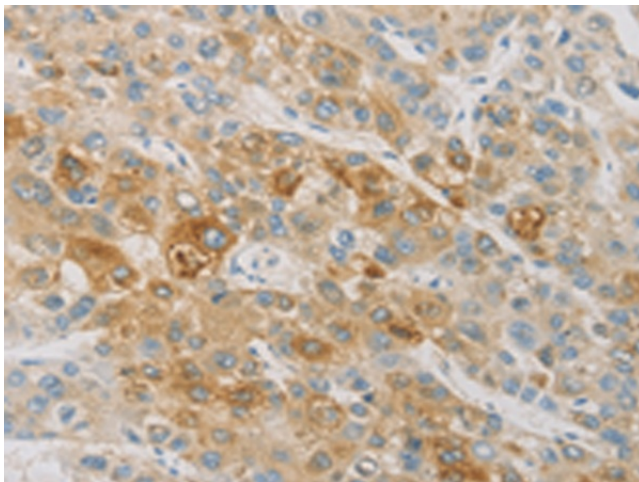
The protein encoded by this gene is an isozyme of the long-chain fatty-acid-coenzyme A ligase family. Although differing in substrate specificity, subcellular localization, and tissue distribution, all isozymes of this family convert free long-chain fatty acids into fatty acyl-CoA esters, and thereby play a key role in lipid biosynthesis and fatty acid degradation. This isozyme preferentially utilizes arachidonate as substrate. The absence of this enzyme may contribute to the mental retardation or Alport syndrome. Alternative splicing of this gene generates 2 transcript variants.

Synonyms:

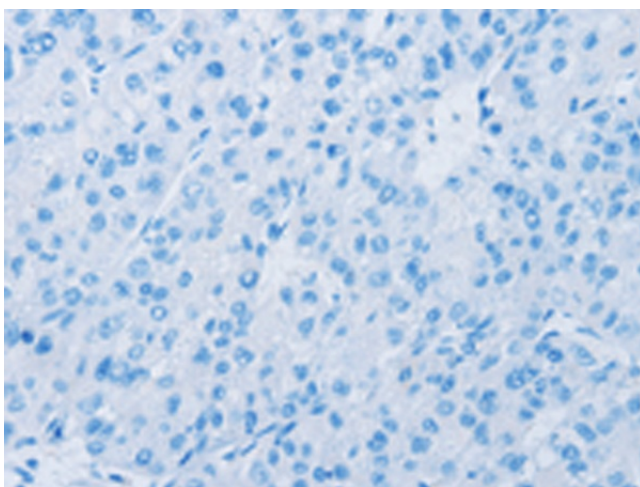
ACS4; FACL4; LACS4; MRX63; MRX68

Product images:


Gel: 8%SDS-PAGE
 Lysate: 40 µg
 Lane 1-4: Hepg2 cells
 hela cells
 293T cells
 human fetal kidney tissue
 Primary antibody: TA364631 (ACSL4 Antibody) at dilution 1/225
 Secondary antibody: Goat anti rabbit IgG at 1/8000 dilution
 Exposure time: 15 seconds



Immunohistochemistry of paraffin-embedded Human liver cancer tissue using TA364631 (ACSL4 Antibody) at dilution 1/25 (Original magnification: ×200)



Immunohistochemistry of paraffin-embedded Human liver cancer tissue using TA364631 (ACSL4 Antibody) at dilution 1/25, treated with fusion protein. (Original magnification: $\times 200$)