

## Product datasheet for **TA364612**

### ARL8A Rabbit Polyclonal Antibody

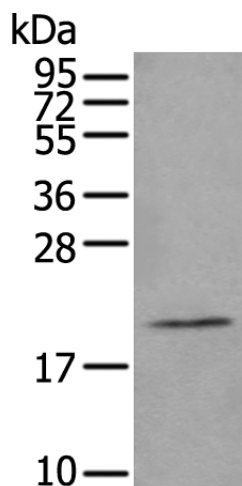
#### Product data:

Product Type:	Primary Antibodies
Applications:	IHC, WB
Recommended Dilution:	WB: 200-1000 WB positive control: Human bladder transitional cell carcinoma grade 2-3 tissue lysate IHC: 25-100 Positive control: Human thyroid cancer Predicted cell location: Cytoplasm
Reactivity:	Human, Mouse
Host:	Rabbit
Isotype:	IgG
Clonality:	Polyclonal
Immunogen:	Full length fusion protein
Formulation:	pH7.4 PBS, 0.05% NaN <sub>3</sub> , 40% Glycerol
Concentration:	lot specific
Purification:	Antigen affinity purification
Conjugation:	Unconjugated
Storage:	Store at -20°C.
Stability:	1 year
Predicted Protein Size:	21 kDa
Gene Name:	ADP ribosylation factor like GTPase 8A
Database Link:	<a href="#">Entrez Gene 127829 Human Q96BM9</a>
Background:	May play a role in lysosomes motility. Alternatively, may play a role in chromosome segregation.
Synonyms:	ARL10B; FLJ45195; Gie2

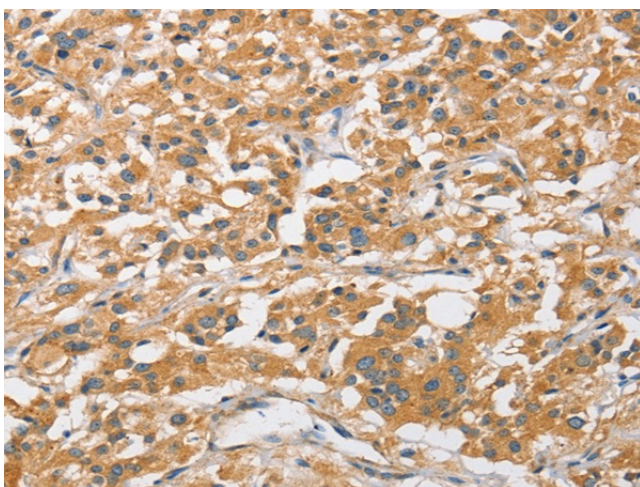


[View online »](#)

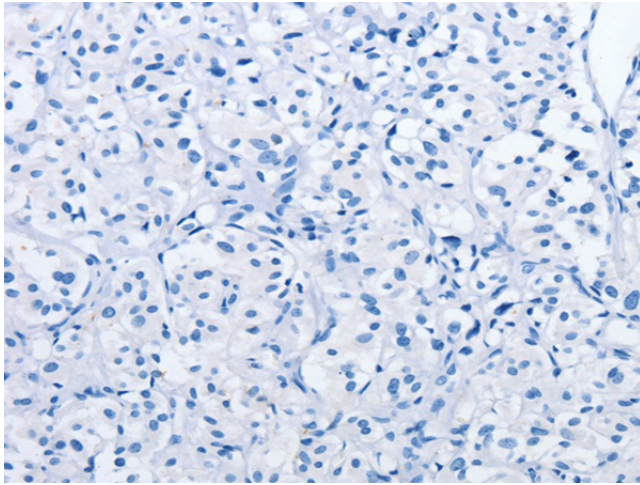
## Product images:



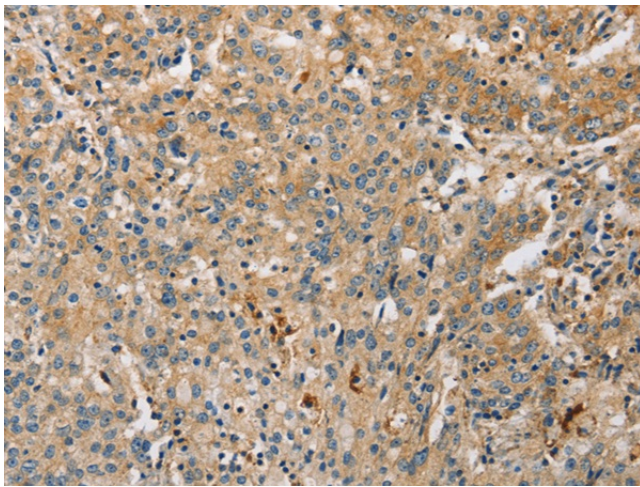
Gel: 12%SDS-PAGE  
Lysate: 40  $\mu$ g  
Lane: Human bladder transitional cell carcinoma grade 2-3 tissue lysate  
Primary antibody: TA364612 (ARL8A Antibody) at dilution 1/200  
Secondary antibody: Goat anti rabbit IgG at 1/8000 dilution  
Exposure time: 10 seconds



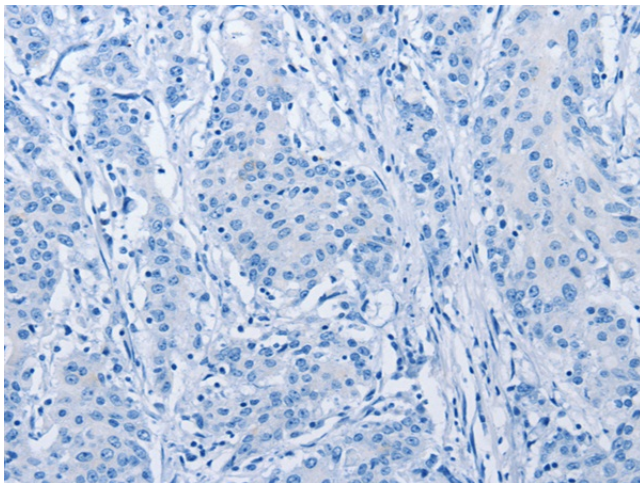
Immunohistochemistry of paraffin-embedded Human thyroid cancer tissue using TA364612 (ARL8A Antibody) at dilution 1/20 (Original magnification:  $\times$ 200)



Immunohistochemistry of paraffin-embedded Human thyroid cancer tissue using TA364612 (ARL8A Antibody) at dilution 1/20, treated with fusion protein. (Original magnification: ×200)



Immunohistochemistry of paraffin-embedded Human gastric cancer tissue using TA364612 (ARL8A Antibody) at dilution 1/20 (Original magnification: ×200)



Immunohistochemistry of paraffin-embedded Human gastric cancer tissue using TA364612 (ARL8A Antibody) at dilution 1/20, treated with fusion protein. (Original magnification: ×200)