

Product datasheet for **TA364609S**

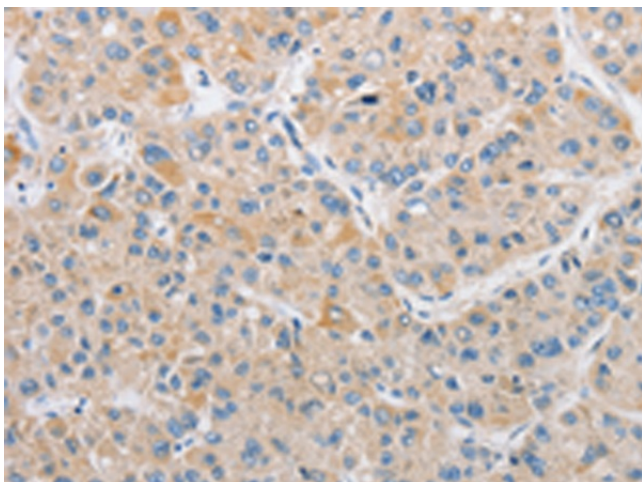
ARHGEF9 Rabbit Polyclonal Antibody

Product data:

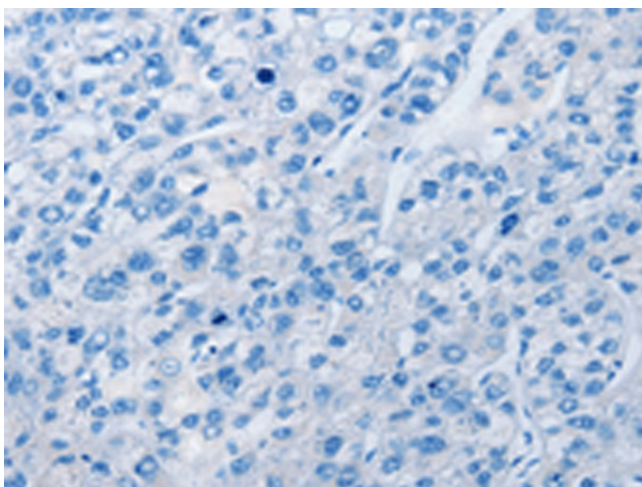
Product Type:	Primary Antibodies
Applications:	IHC
Recommended Dilution:	IHC: 50-200 Positive control: Human liver cancer Predicted cell location: Cytoplasm
Reactivity:	Human, Mouse, Rat
Host:	Rabbit
Isotype:	IgG
Clonality:	Polyclonal
Immunogen:	Fusion protein of human ARHGEF9
Formulation:	pH7.4 PBS, 0.05% NaN ₃ , 40% Glycerol
Purification:	Antigen affinity purification
Conjugation:	Unconjugated
Storage:	Store at -20°C.
Stability:	1 year
Gene Name:	Cdc42 guanine nucleotide exchange factor 9
Database Link:	Entrez Gene 23229 Human O43307
Background:	The protein encoded by this gene is a Rho-like GTPase that switches between the active (GTP-bound) state and inactive (GDP-bound) state to regulate CDC42 and other genes. Defects in this gene are a cause of startle disease with epilepsy (STHEE), also known as hyperekplexia with epilepsy. Three transcript variants encoding different isoforms have been found for this gene.
Synonyms:	COLLYBISTIN; HPEM-2; KIAA0424; PEM-2; PEM2



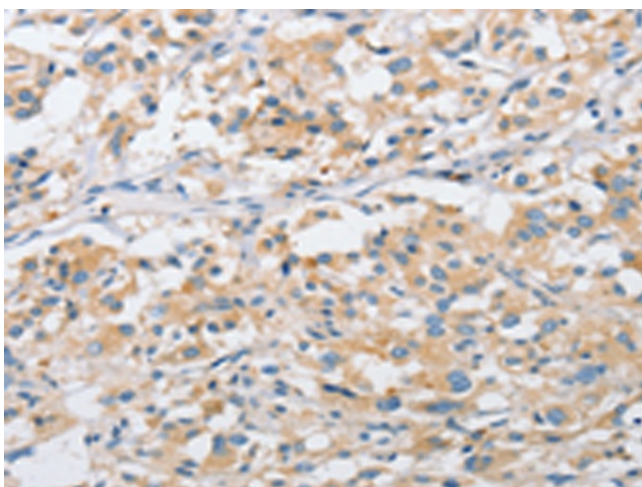
[View online »](#)

Product images:

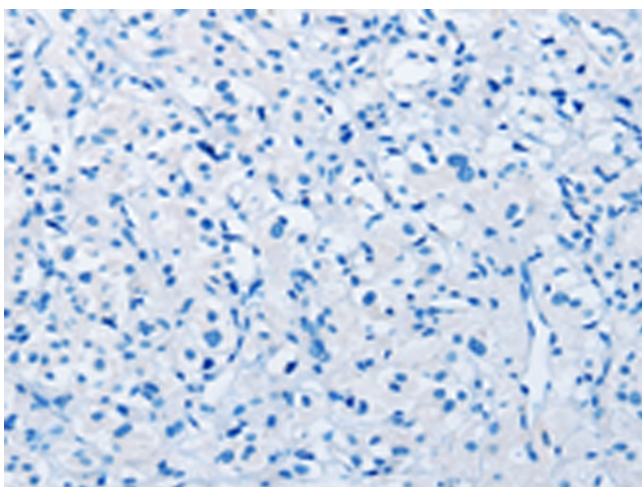
Immunohistochemistry of paraffin-embedded Human liver cancer tissue using [TA364609] (ARHGEF9 Antibody) at dilution 1/50 (Original magnification: $\times 200$)



Immunohistochemistry of paraffin-embedded Human liver cancer tissue using [TA364609] (ARHGEF9 Antibody) at dilution 1/50, treated with fusion protein. (Original magnification: $\times 200$)



Immunohistochemistry of paraffin-embedded Human thyroid cancer tissue using [TA364609] (ARHGEF9 Antibody) at dilution 1/50 (Original magnification: ×200)



Immunohistochemistry of paraffin-embedded Human thyroid cancer tissue using [TA364609] (ARHGEF9 Antibody) at dilution 1/50, treated with fusion protein. (Original magnification: ×200)