

Product datasheet for **TA364606**

ARFGAP1 Rabbit Polyclonal Antibody

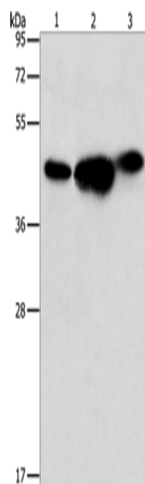
Product data:

Product Type:	Primary Antibodies
Applications:	WB
Recommended Dilution:	WB: 1000-5000 WB positive control: 293T, PC3 and NIH/3T3 cells
Reactivity:	Human, Mouse
Host:	Rabbit
Isotype:	IgG
Clonality:	Polyclonal
Immunogen:	Fusion protein of human ARFGAP1
Formulation:	pH7.4 PBS, 0.05% NaN ₃ , 40% Glycerol
Concentration:	lot specific
Purification:	Antigen affinity purification
Conjugation:	Unconjugated
Storage:	Store at -20°C.
Stability:	1 year
Predicted Protein Size:	45 kDa
Gene Name:	ADP ribosylation factor GTPase activating protein 1
Database Link:	Entrez Gene 55738 Human Q8N6T3
Background:	The protein encoded by this gene is a GTPase-activating protein (GAP) which associates with the Golgi apparatus and which interacts with ADP-ribosylation factor 1 (ARF1). The encoded protein promotes hydrolysis of ARF1-bound GTP and is required for the dissociation of coat proteins from Golgi-derived membranes and vesicles. Dissociation of the coat proteins is required for the fusion of these vesicles with target compartments. The activity of this protein is stimulated by phosphoinositides and inhibited by phosphatidylcholine. Two transcript variants encoding different isoforms have been found for this gene.
Synonyms:	ARF1GAP; bA261N11.3; FLJ10767; HRIHFB2281; MGC39924



[View online »](#)

Product images:



Gel: 10%SDS-PAGE

Lysate: 40 μ g

Lane 1-3: 293T cells

PC3 cells

NIH/3T3 cells

Primary antibody: TA364606 (ARFGAP1 Antibody)
at dilution 1/850

Secondary antibody: Goat anti rabbit IgG at
1/8000 dilution

Exposure time: 10 seconds