

Product datasheet for **TA364602**

Apolipoprotein CI (APOC1) Rabbit Polyclonal Antibody

Product data:

| | |
|-------------------------|---|
| Product Type: | Primary Antibodies |
| Applications: | WB |
| Recommended Dilution: | WB: 500-2000 WB positive control: Human plasma solution, Human liver cancer tissue lysates |
| Reactivity: | Human |
| Host: | Rabbit |
| Isotype: | IgG |
| Clonality: | Polyclonal |
| Immunogen: | Fusion protein of human APOC1 |
| Formulation: | pH7.4 PBS, 0.05% NaN ₃ , 40% Glycerol |
| Concentration: | lot specific |
| Purification: | Antigen affinity purification |
| Conjugation: | Unconjugated |
| Storage: | Store at -20°C. |
| Stability: | 1 year |
| Predicted Protein Size: | 9 kDa |
| Gene Name: | apolipoprotein C1 |
| Database Link: | Entrez Gene 341 Human P02654 |

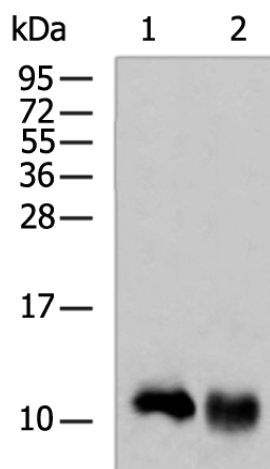
Background: This gene encodes a member of the apolipoprotein C1 family. This gene is expressed primarily in the liver, and it is activated when monocytes differentiate into macrophages. The encoded protein plays a central role in high density lipoprotein (HDL) and very low density lipoprotein (VLDL) metabolism. This protein has also been shown to inhibit cholesteryl ester transfer protein in plasma. A pseudogene of this gene is located 4 kb downstream in the same orientation, on the same chromosome. This gene is mapped to chromosome 19, where it resides within a apolipoprotein gene cluster. Alternative splicing and the use of alternative promoters results in multiple transcript variants.

Synonyms: Apo-CI; ApoC-I



[View online »](#)

Product images:



Gel: 12%SDS-PAGE

Lysate: 40 μ g

Lane 1-2: Human plasma solution

Human liver cancer tissue lysates

Primary antibody: TA364602 (APOC1 Antibody) at dilution 1/1000

Secondary antibody: Goat anti rabbit IgG at 1/5000 dilution

Exposure time: 30 seconds