

## Product datasheet for **TA364600S**

### Apg10 (ATG10) Rabbit Polyclonal Antibody

#### Product data:

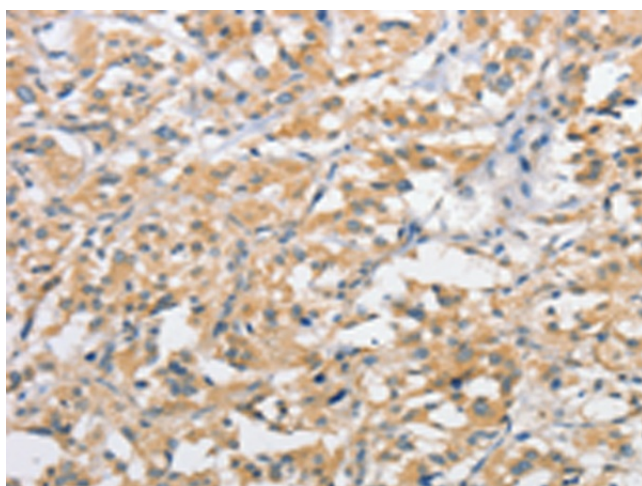
Product Type:	Primary Antibodies
Applications:	IHC, WB
Recommended Dilution:	WB: 200-1000 WB positive control: Mouse liver tissue IHC: 50-200 Positive control: Human thyroid cancer Predicted cell location: Cytoplasm
Reactivity:	Human, Mouse
Host:	Rabbit
Isotype:	IgG
Clonality:	Polyclonal
Immunogen:	Fusion protein of human ATG10
Formulation:	pH7.4 PBS, 0.05% NaN <sub>3</sub> , 40% Glycerol
Purification:	Antigen affinity purification
Conjugation:	Unconjugated
Storage:	Store at -20°C.
Stability:	1 year
Predicted Protein Size:	25 kDa
Gene Name:	autophagy related 10
Database Link:	<a href="#">Entrez Gene 83734 Human Q9H0Y0</a>
Background:	Autophagy is a process for the bulk degradation of cytosolic compartments by lysosomes. ATG10 is an E2-like enzyme involved in 2 ubiquitin-like modifications essential for autophagosome formation: ATG12 (MIM 609608)-ATG5 (MIM 604261) conjugation and modification of a soluble form of MAP-LC3 (MAP1LC3A; MIM 601242), a homolog of yeast Apg8, to a membrane-bound form.
Synonyms:	APG10; APG10-like; APG10L; DKFZp586I0418; FLJ13954; pp12616



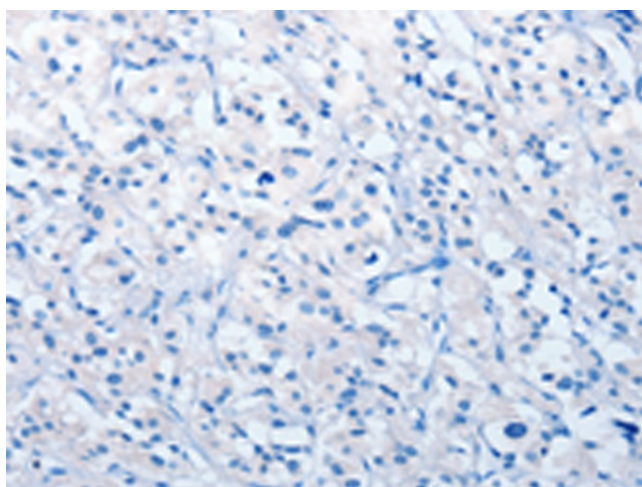
[View online »](#)

**Product images:**

Gel: 10%SDS-PAGE  
Lysate: 50 µg  
Lane: Mouse liver tissue  
Primary antibody: [TA364600] (ATG10 Antibody)  
at dilution 1/500  
Secondary antibody: Goat anti rabbit IgG at  
1/8000 dilution  
Exposure time: 1 minute



Immunohistochemistry of paraffin-embedded  
Human thyroid cancer tissue using [TA364600]  
(ATG10 Antibody) at dilution 1/60 (Original  
magnification: ×200)



Immunohistochemistry of paraffin-embedded  
Human thyroid cancer tissue using [TA364600]  
(ATG10 Antibody) at dilution 1/60, treated with  
fusion protein. (Original magnification: ×200)