

## Product datasheet for **TA364593**

### Actin (ACTA1) Rabbit Polyclonal Antibody

#### Product data:

Product Type:	Primary Antibodies
Applications:	WB
Recommended Dilution:	WB: 200-1000 WB positive control: Mouse heart and muscle tissue
Reactivity:	Human, Mouse, Rat
Host:	Rabbit
Isotype:	IgG
Clonality:	Polyclonal
Immunogen:	Fusion protein of human ACTA1
Formulation:	pH7.4 PBS, 0.05% NaN <sub>3</sub> , 40% Glycerol
Concentration:	lot specific
Purification:	Antigen affinity purification
Conjugation:	Unconjugated
Storage:	Store at -20°C.
Stability:	1 year
Predicted Protein Size:	42 kDa
Gene Name:	actin, alpha 1, skeletal muscle
Database Link:	<a href="#">Entrez Gene 58 Human P68133</a>

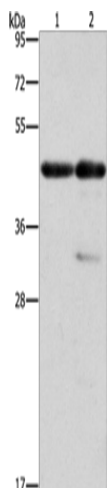
**Background:** The product encoded by this gene belongs to the actin family of proteins, which are highly conserved proteins that play a role in cell motility, structure and integrity. Alpha, beta and gamma actin isoforms have been identified, with alpha actins being a major constituent of the contractile apparatus, while beta and gamma actins are involved in the regulation of cell motility. This actin is an alpha actin that is found in skeletal muscle. Mutations in this gene cause nemaline myopathy type 3, congenital myopathy with excess of thin myofilaments, congenital myopathy with cores, and congenital myopathy with fiber-type disproportion, diseases that lead to muscle fiber defects.

**Synonyms:** ACTA; Alpha-actin-1; ASMA; CFTD; CFTD1; CFTDM; MPFD; NEM1; NEM2; NEM3



[View online »](#)

## Product images:



Gel: 10%SDS-PAGE

Lysate: 40 µg

Lane 1-2: Mouse heart tissue

Mouse muscle tissue

Primary antibody: TA364593 (ACTA1 Antibody) at dilution 1/275

Secondary antibody: Goat anti rabbit IgG at 1/8000 dilution

Exposure time: 10 seconds