

Product datasheet for **TA364584**

AF9 (MLLT3) Rabbit Polyclonal Antibody

Product data:

Product Type:	Primary Antibodies
Applications:	WB
Recommended Dilution:	WB: 1000-5000 WB positive control: HepG2, 293T, K562 cell lysates
Reactivity:	Human, Mouse
Host:	Rabbit
Isotype:	IgG
Clonality:	Polyclonal
Immunogen:	Fusion protein of human MLLT3
Formulation:	pH7.4 PBS, 0.05% NaN ₃ , 40% Glycerol
Concentration:	lot specific
Purification:	Antigen affinity purification
Conjugation:	Unconjugated
Storage:	Store at -20°C.
Stability:	1 year
Predicted Protein Size:	63 kDa
Gene Name:	myeloid/lymphoid or mixed-lineage leukemia; translocated to, 3
Database Link:	Entrez Gene 4300 Human P42568



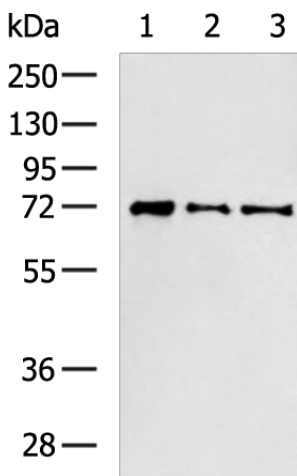
[View online »](#)

Background:

Chromatin reader component of the super elongation complex (SEC), a complex required to increase the catalytic rate of RNA polymerase II transcription by suppressing transient pausing by the polymerase at multiple sites along the DNA. Specifically recognizes and binds acylated histone H3, with a marked preference for histone H3 that is crotonylated. Crotonylation marks active promoters and enhancers and confers resistance to transcriptional repressors. Recognizes and binds histone H3 crotonylated at 'Lys-9' (H3K9cr), and with slightly lower affinity histone H3 crotonylated at 'Lys-18' (H3K18cr). Also recognizes and binds histone H3 acetylated at 'Lys-9' (H3K9ac), but with lower affinity than crotonylated histone H3. In the SEC complex, MLLT3 is required to recruit the complex to crotonylated histones.

Synonyms:

AF-9; AF9; FLJ2035; YEATS3

Product images:

Gel: 8%SDS-PAGE

Lysate: 40 µg

Lane 1-3: HepG2

293T

K562 cell lysates

Primary antibody: TA364584 (MLLT3 Antibody) at dilution 1/1000

Secondary antibody: Goat anti rabbit IgG at 1/5000 dilution

Exposure time: 2 minutes