

## Product datasheet for **TA364581**

### ADAMTSL2 Rabbit Polyclonal Antibody

#### Product data:

Product Type:	Primary Antibodies
Applications:	IHC
Recommended Dilution:	IHC: 50-200 Positive control: Human prostate cancer Predicted cell location: Secreted
Reactivity:	Human, Mouse
Host:	Rabbit
Isotype:	IgG
Clonality:	Polyclonal
Immunogen:	Fusion protein of human ADAMTSL2
Formulation:	pH7.4 PBS, 0.05% NaN <sub>3</sub> , 40% Glycerol
Concentration:	lot specific
Purification:	Antigen affinity purification
Conjugation:	Unconjugated
Storage:	Store at -20°C.
Stability:	1 year
Gene Name:	ADAMTS like 2
Database Link:	<a href="#">Entrez Gene 9719 Human Q86TH1</a>



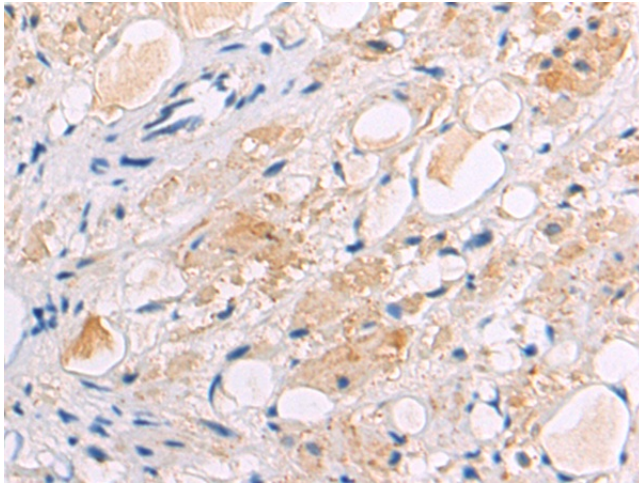
[View online »](#)

**Background:**

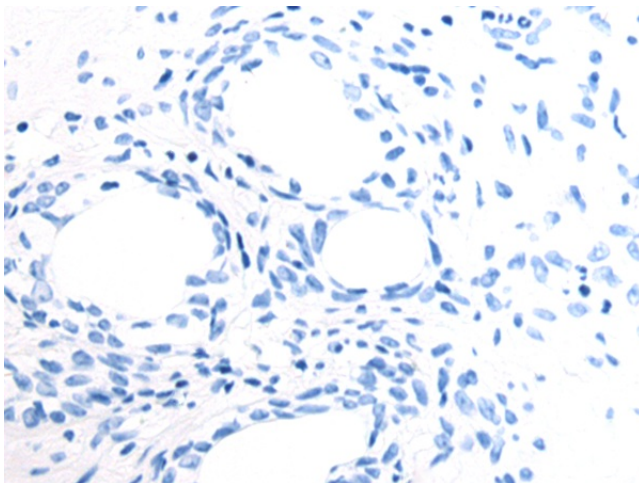
This gene encodes a member of the ADAMTS (a disintegrin and metalloproteinase with thrombospondin motifs) and ADAMTS-like protein family. Members of the family share several distinct protein modules, including a propeptide region, a metalloproteinase domain, a disintegrin-like domain, and a thrombospondin type 1 (TS) motif. Individual members of this family differ in the number of C-terminal TS motifs, and some have unique C-terminal domains. The protein encoded by this gene lacks the protease domain, and is therefore of a member of the the ADAMTS-like protein subfamily. It is a secreted glycoprotein that binds the cell surface and extracellular matrix; it also interacts with latent transforming growth factor beta binding protein 1. Mutations in this gene have been associated with geleophysic dysplasia.

**Synonyms:**

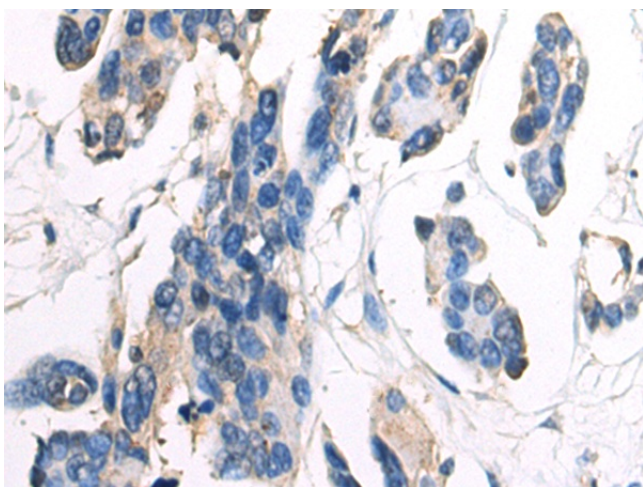
ADAMTSL-2; FLJ45164; KIAA0605

**Product images:**

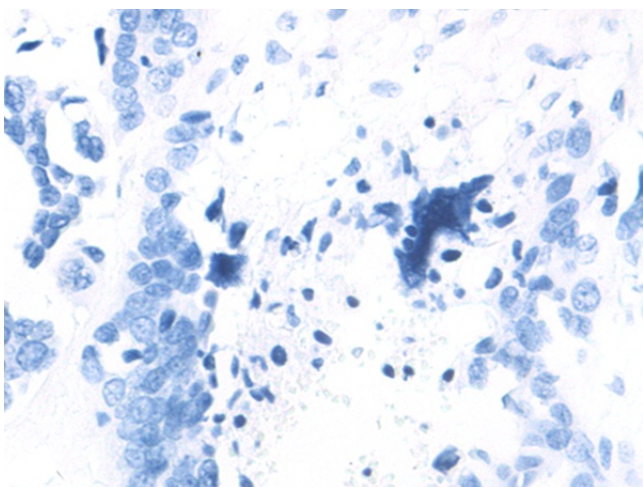
Immunohistochemistry of paraffin-embedded Human prostate cancer tissue using TA364581 (ADAMTSL2 Antibody) at dilution 1/70 (Original magnification:  $\times 200$ )



Immunohistochemistry of paraffin-embedded Human prostate cancer tissue using TA364581 (ADAMTSL2 Antibody) at dilution 1/70, treated with fusion protein. (Original magnification:  $\times 200$ )



Immunohistochemistry of paraffin-embedded Human colorectal cancer tissue using TA364581 (ADAMTSL2 Antibody) at dilution 1/70 (Original magnification:  $\times 200$ )



Immunohistochemistry of paraffin-embedded Human colorectal cancer tissue using TA364581 (ADAMTSL2 Antibody) at dilution 1/70, treated with fusion protein. (Original magnification:  $\times 200$ )