

Product datasheet for **TA364580**

ADAM30 Rabbit Polyclonal Antibody

Product data:

Product Type: Primary Antibodies
Applications: IHC
Recommended Dilution: IHC: 100-200
Positive control: Human colorectal cancer
Predicted cell location: Cytoplasm

Reactivity: Human

Host: Rabbit

Isotype: IgG

Clonality: Polyclonal

Immunogen: Fusion protein of human ADAM30

Formulation: pH7.4 PBS, 0.05% NaN₃, 40% Glycerol

Concentration: lot specific

Purification: Antigen affinity purification

Conjugation: Unconjugated

Storage: Store at -20°C.

Stability: 1 year

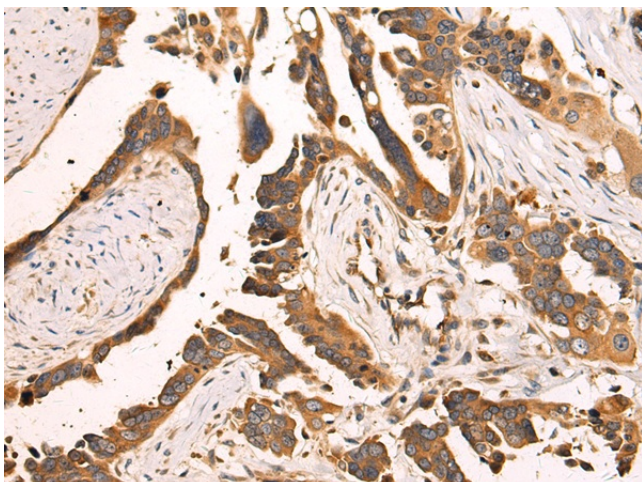
Gene Name: ADAM metalloproteinase domain 30

Database Link: [Entrez Gene 11085 Human](#)
[Q9UKF2](#)

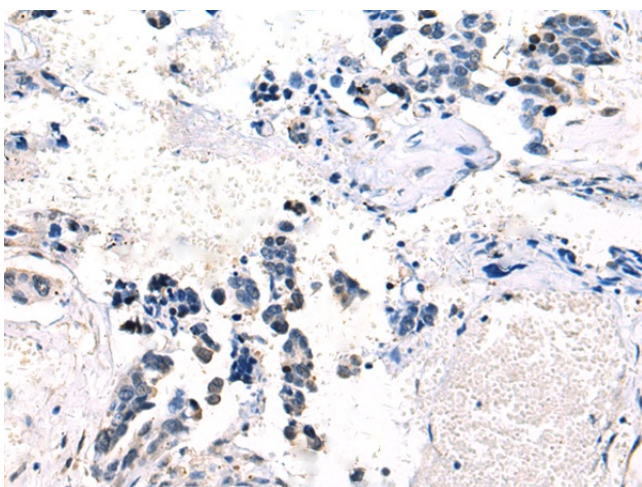
Background: This gene encodes a member of the ADAM (a disintegrin and metalloprotease domain) family. Members of this family are membrane-anchored proteins structurally related to snake venom disintegrins, and have been implicated in a variety of biological processes involving cell-cell and cell-matrix interactions, including fertilization, muscle development, and neurogenesis. This gene is testis-specific and contains a polymorphic region, resulting in isoforms with varying numbers of C-terminal repeats.

Synonyms: svph4

[View online »](#)

Product images:


Immunohistochemistry of paraffin-embedded Human colorectal cancer tissue using TA364580 (ADAM30 Antibody) at dilution 1/105 (Original magnification: $\times 200$)



Immunohistochemistry of paraffin-embedded Human colorectal cancer tissue using TA364580 (ADAM30 Antibody) at dilution 1/105, treated with fusion protein. (Original magnification: $\times 200$)