

Product datasheet for **TA364578**

ABI2 Rabbit Polyclonal Antibody

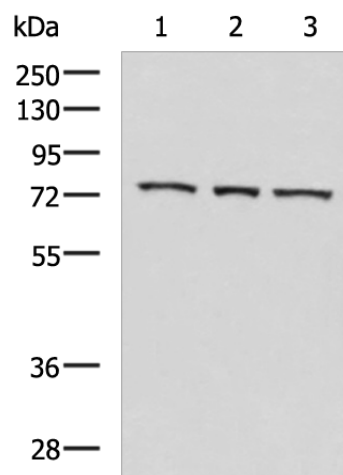
Product data:

Product Type:	Primary Antibodies
Applications:	WB
Recommended Dilution:	WB: 500-2000 WB positive control: K562 cell, Mouse heart tissue, Jurkat cell lysates
Reactivity:	Human, Mouse
Host:	Rabbit
Isotype:	IgG
Clonality:	Polyclonal
Immunogen:	Fusion protein of human ABI2
Formulation:	pH7.4 PBS, 0.05% NaN ₃ , 40% Glycerol
Concentration:	lot specific
Purification:	Antigen affinity purification
Conjugation:	Unconjugated
Storage:	Store at -20°C.
Stability:	1 year
Predicted Protein Size:	56 kDa
Gene Name:	abl-interactor 2
Database Link:	Entrez Gene 10152 Human Q9NYB9
Background:	May act in regulation of cell growth and transformation by interacting with nonreceptor tyrosine kinases ABL1 and/or ABL2. Part of the WAVE complex that regulates lamellipodia formation. The WAVE complex regulates actin filament reorganization via its interaction with the Arp2/3 complex. Regulates ABL1/c-Abl-mediated phosphorylation of MENA. As component of the WAVE1 complex, required for BDNF-NTRK2 endocytic trafficking and signaling from early endosomes.
Synonyms:	ABI-2; ABI2B; AbIBP3; AIP-1; ArgBP1; argBP1A; argBP1B; SSH3BP2



[View online »](#)

Product images:



Gel: 8%SDS-PAGE
Lysate: 40 μ g
Lane 1-3: K562 cell
Mouse heart tissue
Jurkat cell lysates
Primary antibody: TA364578 (ABI2 Antibody) at
dilution 1/550
Secondary antibody: Goat anti rabbit IgG at
1/5000 dilution
Exposure time: 1 minute