

Product datasheet for **TA364572S**

TSLP Rabbit Polyclonal Antibody

Product data:

Product Type:	Primary Antibodies
Applications:	IHC, WB
Recommended Dilution:	WB: 500-2000 WB positive control: Mouse fetal muscle tissue lysate IHC: 100-300 Positive control: Human breast cancer Predicted cell location: Secreted
Reactivity:	Human, Mouse
Host:	Rabbit
Isotype:	IgG
Clonality:	Polyclonal
Immunogen:	Fusion protein of human TSLP
Formulation:	pH7.4 PBS, 0.05% NaN ₃ , 40% Glycerol
Purification:	Antigen affinity purification
Conjugation:	Unconjugated
Storage:	Store at -20°C.
Stability:	1 year
Predicted Protein Size:	18 kDa
Gene Name:	thymic stromal lymphopoietin
Database Link:	Entrez Gene 85480 Human Q969D9



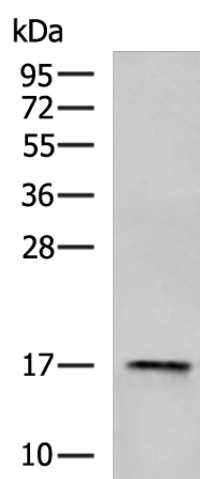
[View online »](#)

Background:

This gene encodes a hemopoietic cytokine proposed to signal through a heterodimeric receptor complex composed of the thymic stromal lymphopoietin receptor and the IL-7R alpha chain. It mainly impacts myeloid cells and induces the release of T cell-attracting chemokines from monocytes and enhances the maturation of CD11c(+) dendritic cells. The protein promotes T helper type 2 (TH2) cell responses that are associated with immunity in various inflammatory diseases, including asthma, allergic inflammation and chronic obstructive pulmonary disease. The protein is therefore considered a potential therapeutic target for the treatment of such diseases. In addition, the shorter (predominant) isoform is an antimicrobial protein, displaying antibacterial and antifungal activity against *B. cereus*, *E. coli*, *E. faecalis*, *S. mitis*, *S. epidermidis*, and *C. albicans*. Alternative splicing of this gene results in multiple transcript variants.

Synonyms:

TSLP

Product images:

Gel: 12%SDS-PAGE

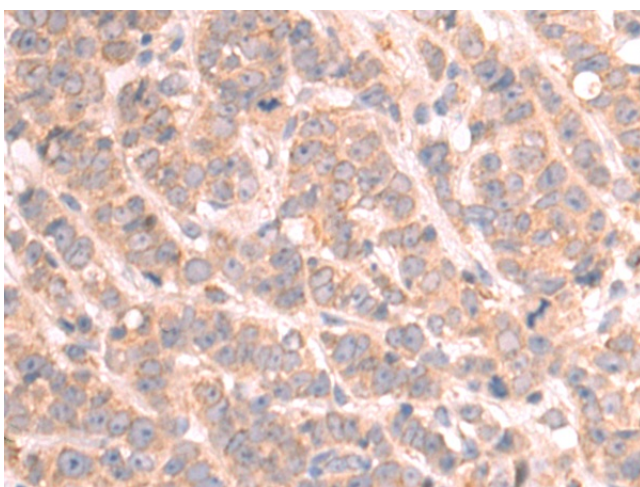
Lysate: 40 µg

Lane: Mouse fetal muscle tissue lysate

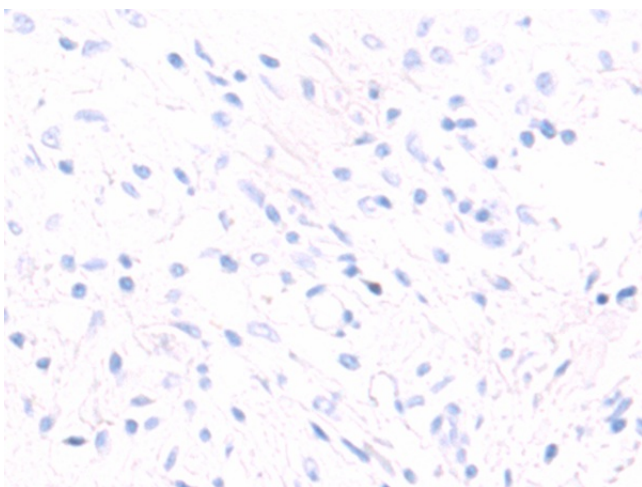
Primary antibody: [TA364572] (TSLP Antibody) at dilution 1/1000

Secondary antibody: Goat anti rabbit IgG at 1/5000 dilution

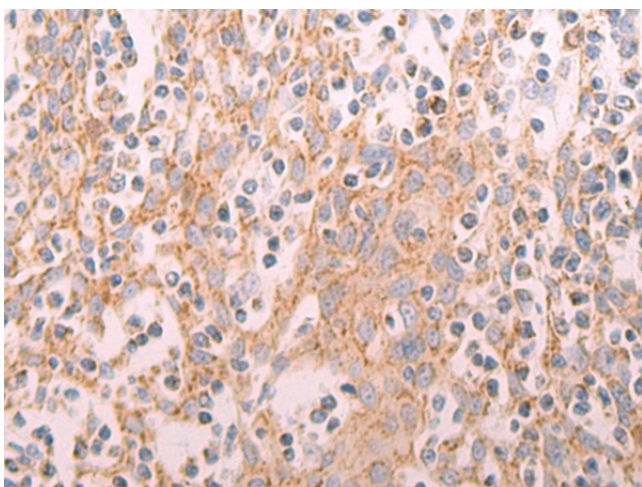
Exposure time: 1 minute



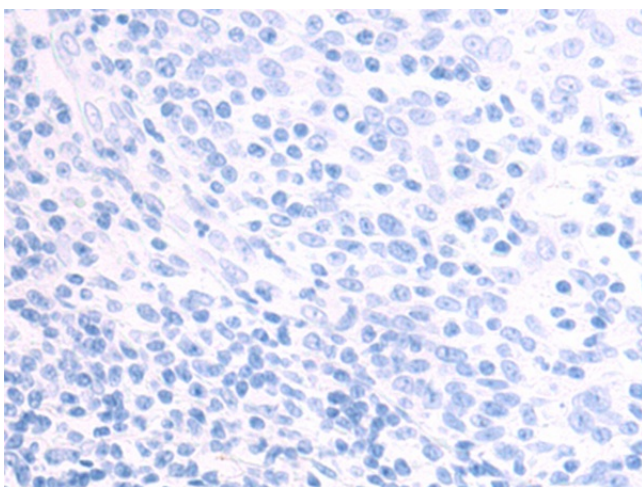
Immunohistochemistry of paraffin-embedded Human breast cancer tissue using [TA364572] (TSLP Antibody) at dilution 1/115 (Original magnification: ×200)



Immunohistochemistry of paraffin-embedded Human breast cancer tissue using [TA364572] (TSLP Antibody) at dilution 1/115, treated with fusion protein. (Original magnification: ×200)



Immunohistochemistry of paraffin-embedded Human tonsil tissue using [TA364572] (TSLP Antibody) at dilution 1/115 (Original magnification: ×200)



Immunohistochemistry of paraffin-embedded Human tonsil tissue using [TA364572] (TSLP Antibody) at dilution 1/115, treated with fusion protein. (Original magnification: ×200)