

Product datasheet for **TA364567S**

TRAF4 Rabbit Polyclonal Antibody

Product data:

Product Type:	Primary Antibodies
Applications:	IHC, WB
Recommended Dilution:	WB: 200-1000 WB positive control: Jurkat \square HEPG2 and K562 cell lysates IHC: 25-100 Positive control: Human gastric cancer Predicted cell location: Cytoplasm or Nucleus
Reactivity:	Human, Mouse
Host:	Rabbit
Isotype:	IgG
Clonality:	Polyclonal
Immunogen:	Fusion protein of human TRAF4
Formulation:	pH7.4 PBS, 0.05% NaN ₃ , 40% Glycerol
Purification:	Antigen affinity purification
Conjugation:	Unconjugated
Storage:	Store at -20°C.
Stability:	1 year
Predicted Protein Size:	54 kDa
Gene Name:	TNF receptor associated factor 4
Database Link:	Entrez Gene 9618 Human Q9BUZ4



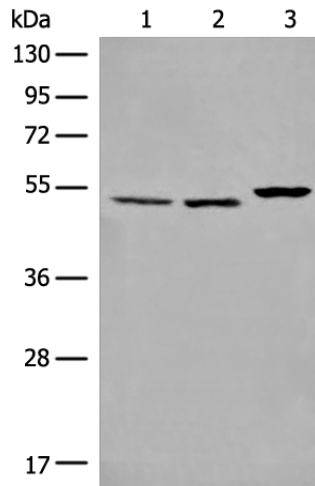
[View online »](#)

Background:

This gene encodes a member of the TNF receptor associated factor (TRAF) family. TRAF proteins are associated with, and mediate signal transduction from members of the TNF receptor superfamily. The encoded protein has been shown to interact with neurotrophin receptor, p75 (NTR/NTSR1), and negatively regulate NTR induced cell death and NF-kappa B activation. This protein has been found to bind to p47phox, a cytosolic regulatory factor included in a multi-protein complex known as NAD(P)H oxidase. This protein thus, is thought to be involved in the oxidative activation of MAPK8/JNK. Alternatively spliced transcript variants have been observed but the full-length nature of only one has been determined.

Synonyms:

CART1; MLN62; RNF83

Product images:

Gel: 8%SDS-PAGE

Lysate: 40 µg

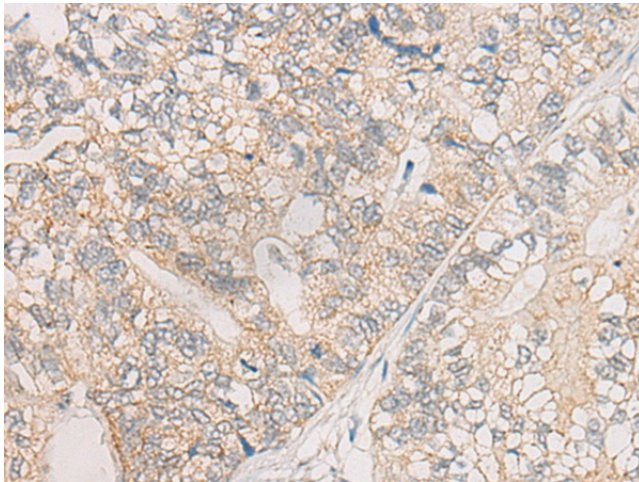
Lane 1-3: Jurkat

HEPG2 and K562 cell lysates

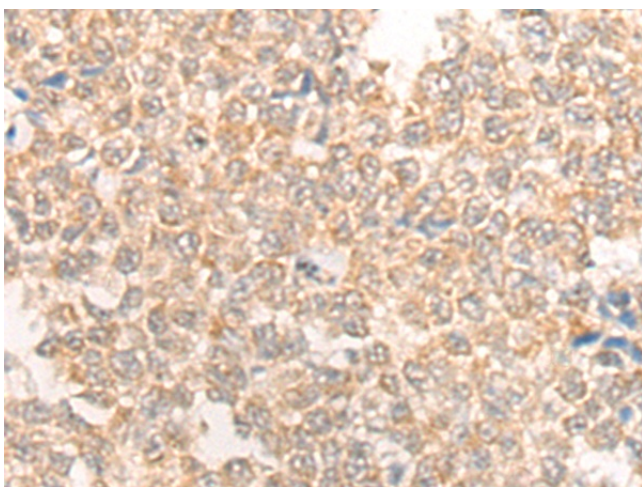
Primary antibody: [TA364567] (TRAF4 Antibody)
at dilution 1/350

Secondary antibody: Goat anti rabbit IgG at
1/8000 dilution

Exposure time: 1 minute



Immunohistochemistry of paraffin-embedded
Human gastric cancer tissue using [TA364567]
(TRAF4 Antibody) at dilution 1/30. (Original
magnification: ×200)



Immunohistochemistry of paraffin-embedded Human ovarian cancer tissue using [TA364567] (TRAF4 Antibody) at dilution 1/30. (Original magnification: $\times 200$)