

Product datasheet for **TA364552S**

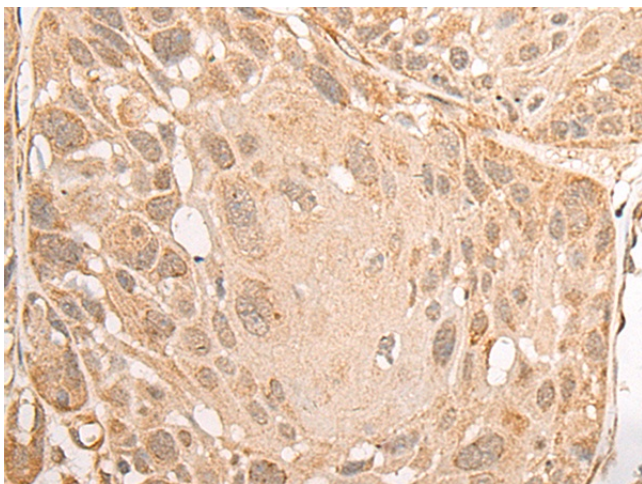
RBMS2 Rabbit Polyclonal Antibody

Product data:

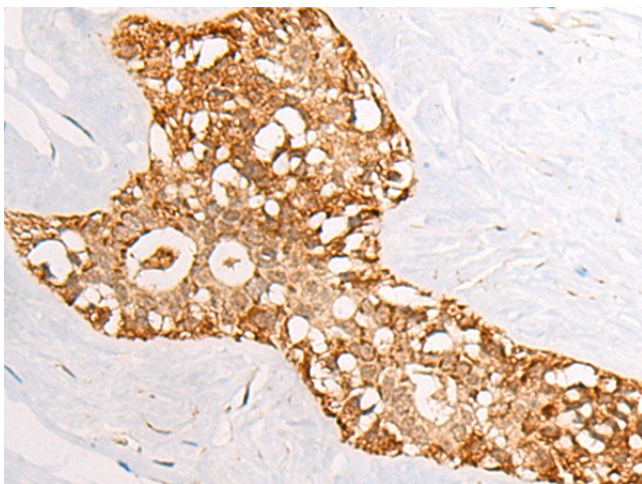
Product Type:	Primary Antibodies
Applications:	IHC
Recommended Dilution:	IHC: 30-150 Positive control: Human esophagus cancer Predicted cell location: Cytoplasm and Nucleus
Reactivity:	Human
Host:	Rabbit
Isotype:	IgG
Clonality:	Polyclonal
Immunogen:	Fusion protein of human RBMS2
Formulation:	pH7.4 PBS, 0.05% NaN ₃ , 40% Glycerol
Purification:	Antigen affinity purification
Conjugation:	Unconjugated
Storage:	Store at -20°C.
Stability:	1 year
Gene Name:	RNA binding motif single stranded interacting protein 2
Database Link:	Entrez Gene 5939 Human Q15434
Background:	The protein encoded by this gene is a member of a small family of proteins which bind single stranded DNA/RNA. These proteins are characterized by the presence of two sets of ribonucleoprotein consensus sequence (RNP-CS) that contain conserved motifs, RNP1 and RNP2, originally described in RNA binding proteins, and required for DNA binding. The RBMS proteins have been implicated in such diverse functions as DNA replication, gene transcription, cell cycle progression and apoptosis. This protein was isolated by phenotypic complementation of <i>cdc2</i> and <i>cdc13</i> mutants of yeast and is thought to suppress <i>cdc2</i> and <i>cdc13</i> mutants through the induction of translation of <i>cdc2</i> .
Synonyms:	FLJ39093; FLJ40023; FLJ43262; SCR3



[View online »](#)

Product images:


Immunohistochemistry of paraffin-embedded Human esophagus cancer tissue using [TA364552] (RBMS2 Antibody) at dilution 1/35. (Original magnification: ×200)



Immunohistochemistry of paraffin-embedded Human breast cancer tissue using [TA364552] (RBMS2 Antibody) at dilution 1/35. (Original magnification: ×200)