

## Product datasheet for **TA364548S**

### **PBP (PEBP1) Rabbit Polyclonal Antibody**

#### **Product data:**

Product Type:	Primary Antibodies
Applications:	IHC, WB
Recommended Dilution:	WB: 500-2000 WB positive control: A549, K562, hela and hepG2 cells IHC: 50-200 Positive control: Human colon cancer Predicted cell location: Cytoplasm
Reactivity:	Human, Mouse, Rat
Host:	Rabbit
Isotype:	IgG
Clonality:	Polyclonal
Immunogen:	Fusion protein of human PEBP1
Formulation:	pH7.4 PBS, 0.05% NaN <sub>3</sub> , 40% Glycerol
Purification:	Antigen affinity purification
Conjugation:	Unconjugated
Storage:	Store at -20°C.
Stability:	1 year
Predicted Protein Size:	21 kDa
Gene Name:	phosphatidylethanolamine binding protein 1
Database Link:	<a href="#">Entrez Gene 5037 Human P30086</a>

**Background:** Phosphatidylethanolamine-binding protein 1 is a protein that in humans is encoded by the PEBP1 gene. Binds ATP, opioids and phosphatidylethanolamine. Has lower affinity for phosphatidylinositol and phosphatidylcholine. Serine protease inhibitor which inhibits thrombin, neuropsin and chymotrypsin but not trypsin, tissue type plasminogen activator and elastase By similarity. Inhibits the kinase activity of RAF1 by inhibiting its activation and by dissociating the RAF1/MEK complex and acting as a competitive inhibitor of MEK phosphorylation.



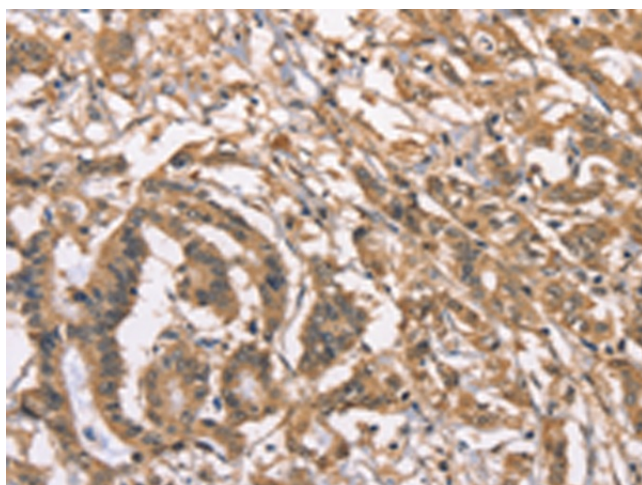
[View online »](#)

Synonyms: HCNP; HCNPpp; PBP; PEBP; PEBP-1; RKIP

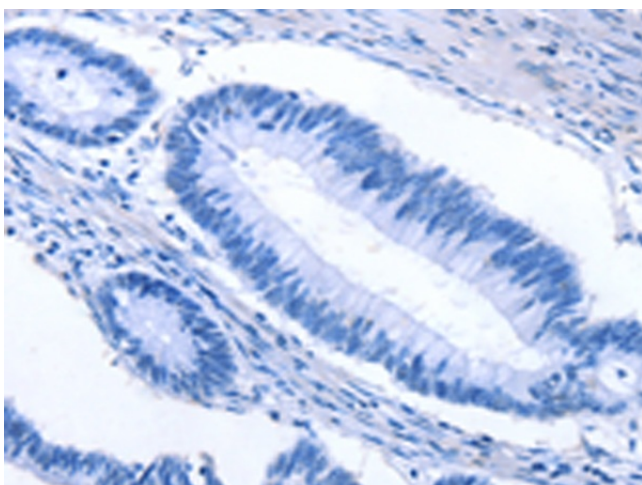
**Product images:**



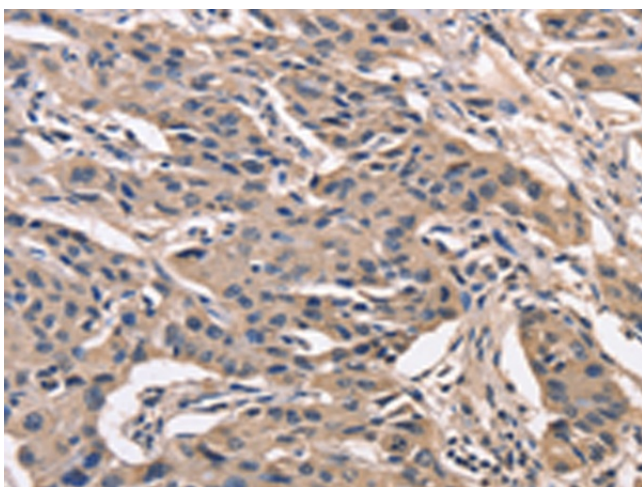
Gel: 8%SDS-PAGE  
 Lysate: 40 µg  
 Lane 1-4: A549 cells  
 K562 cells  
 hela cells  
 hepG2 cells  
 Primary antibody: [TA364548] (PEBP1 Antibody)  
 at dilution 1/400  
 Secondary antibody: Goat anti rabbit IgG at  
 1/8000 dilution  
 Exposure time: 40 seconds



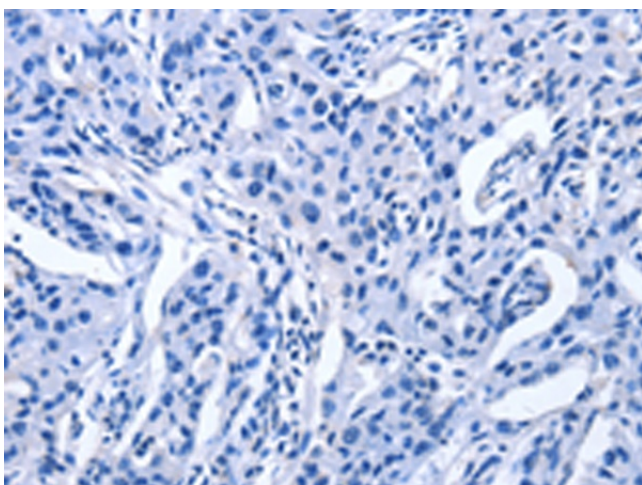
Immunohistochemistry of paraffin-embedded  
 Human colon cancer tissue using [TA364548]  
 (PEBP1 Antibody) at dilution 1/40 (Original  
 magnification: ×200)



Immunohistochemistry of paraffin-embedded Human colon cancer tissue using [TA364548] (PEBP1 Antibody) at dilution 1/40, treated with fusion protein. (Original magnification:  $\times 200$ )



Immunohistochemistry of paraffin-embedded Human lung cancer tissue using [TA364548] (PEBP1 Antibody) at dilution 1/40 (Original magnification:  $\times 200$ )



Immunohistochemistry of paraffin-embedded Human lung cancer tissue using [TA364548] (PEBP1 Antibody) at dilution 1/40, treated with fusion protein. (Original magnification:  $\times 200$ )