

Product datasheet for **TA364548**

PBP (PEBP1) Rabbit Polyclonal Antibody

Product data:

Product Type:	Primary Antibodies
Applications:	IHC, WB
Recommended Dilution:	WB: 500-2000 WB positive control: A549, K562, hela and hepG2 cells IHC: 50-200 Positive control: Human colon cancer Predicted cell location: Cytoplasm
Reactivity:	Human, Mouse, Rat
Host:	Rabbit
Isotype:	IgG
Clonality:	Polyclonal
Immunogen:	Fusion protein of human PEBP1
Formulation:	pH7.4 PBS, 0.05% NaN ₃ , 40% Glycerol
Concentration:	lot specific
Purification:	Antigen affinity purification
Conjugation:	Unconjugated
Storage:	Store at -20°C.
Stability:	1 year
Predicted Protein Size:	21 kDa
Gene Name:	phosphatidylethanolamine binding protein 1
Database Link:	Entrez Gene 5037 Human P30086



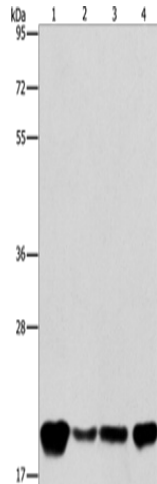
[View online »](#)

Background:

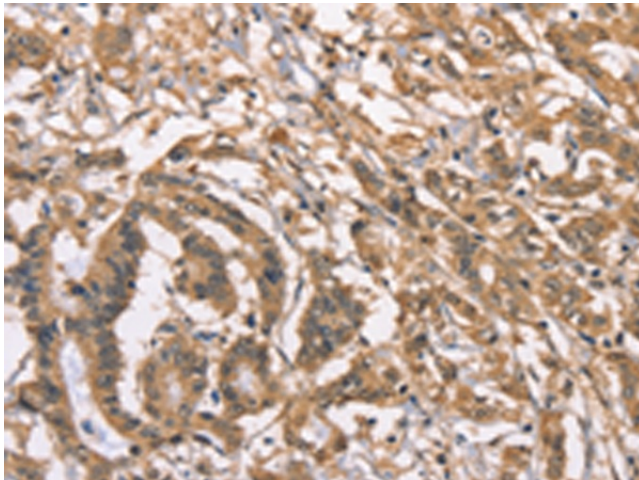
Phosphatidylethanolamine-binding protein 1 is a protein that in humans is encoded by the PEBP1 gene. Binds ATP, opioids and phosphatidylethanolamine. Has lower affinity for phosphatidylinositol and phosphatidylcholine. Serine protease inhibitor which inhibits thrombin, neuropsin and chymotrypsin but not trypsin, tissue type plasminogen activator and elastase By similarity. Inhibits the kinase activity of RAF1 by inhibiting its activation and by dissociating the RAF1/MEK complex and acting as a competitive inhibitor of MEK phosphorylation.

Synonyms:

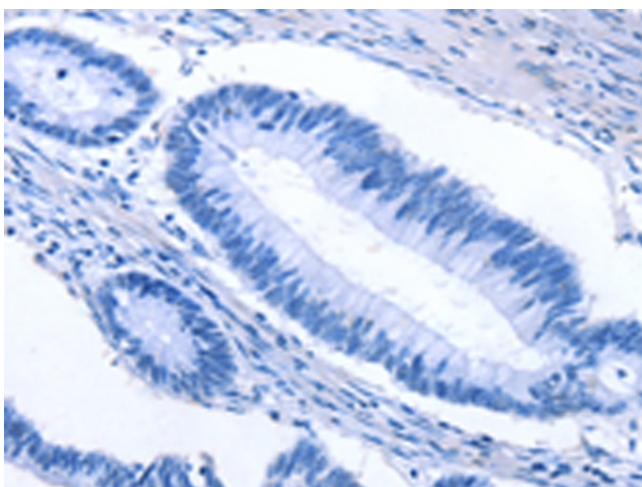
HCNP; HCNPPP; PBP; PEBP; PEBP-1; RKIP

Product images:


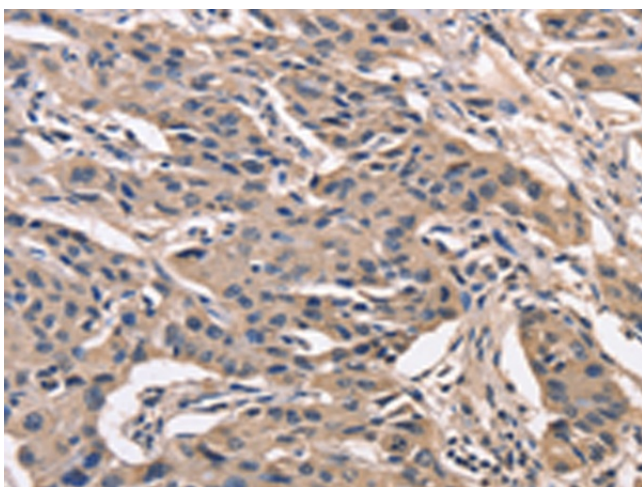
Gel: 8%SDS-PAGE
 Lysate: 40 µg
 Lane 1-4: A549 cells
 K562 cells
 hela cells
 hepG2 cells
 Primary antibody: TA364548 (PEBP1 Antibody) at dilution 1/400
 Secondary antibody: Goat anti rabbit IgG at 1/8000 dilution
 Exposure time: 40 seconds



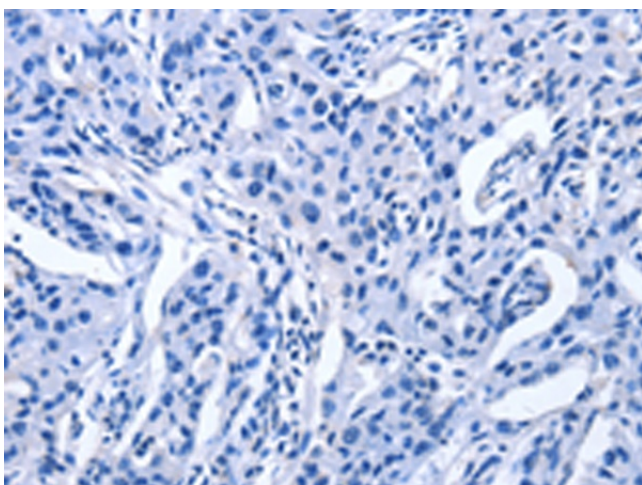
Immunohistochemistry of paraffin-embedded Human colon cancer tissue using TA364548 (PEBP1 Antibody) at dilution 1/40 (Original magnification: ×200)



Immunohistochemistry of paraffin-embedded Human colon cancer tissue using TA364548 (PEBP1 Antibody) at dilution 1/40, treated with fusion protein. (Original magnification: ×200)



Immunohistochemistry of paraffin-embedded Human lung cancer tissue using TA364548 (PEBP1 Antibody) at dilution 1/40 (Original magnification: ×200)



Immunohistochemistry of paraffin-embedded Human lung cancer tissue using TA364548 (PEBP1 Antibody) at dilution 1/40, treated with fusion protein. (Original magnification: ×200)