

## Product datasheet for **TA364547S**

### PLGF (PGF) Rabbit Polyclonal Antibody

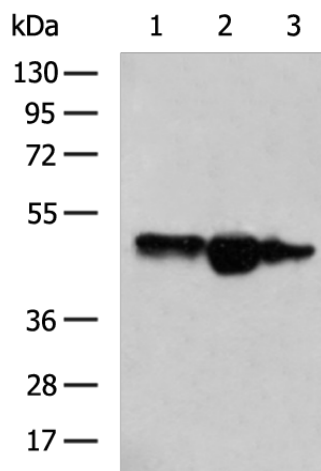
#### Product data:

Product Type:	Primary Antibodies
Applications:	IHC, WB
Recommended Dilution:	WB: 500-2000 WB positive control: Mouse placenta tissue, Hela cell, HUVEC cell lysates IHC: 50-200 Positive control: Human liver cancer Predicted cell location: Secreted
Reactivity:	Human, Mouse
Host:	Rabbit
Isotype:	IgG
Clonality:	Polyclonal
Immunogen:	Fusion protein of human PGF
Formulation:	pH7.4 PBS, 0.05% NaN <sub>3</sub> , 40% Glycerol
Purification:	Antigen affinity purification
Conjugation:	Unconjugated
Storage:	Store at -20°C.
Stability:	1 year
Predicted Protein Size:	25 kDa
Gene Name:	placental growth factor
Database Link:	<a href="#">Entrez Gene 5228 Human P49763</a>
Background:	This gene encodes a growth factor found in placenta which is homologous to vascular endothelial growth factor. Alternatively spliced transcripts encoding different isoforms have been found for this gene.
Synonyms:	D12S1900; PGFL; PLGF; PIGF-2; SHGC-10760

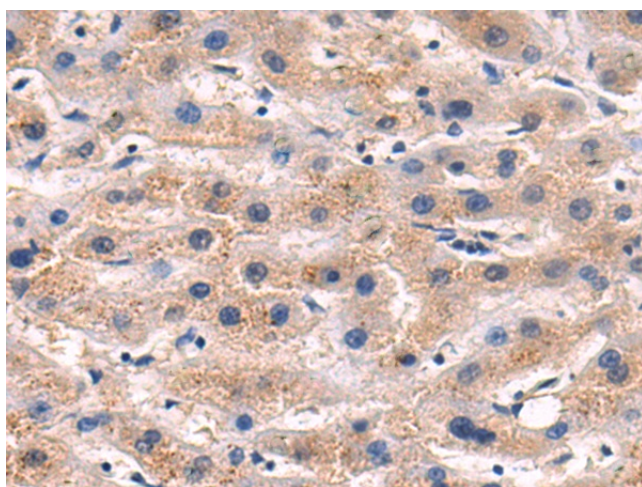


[View online »](#)

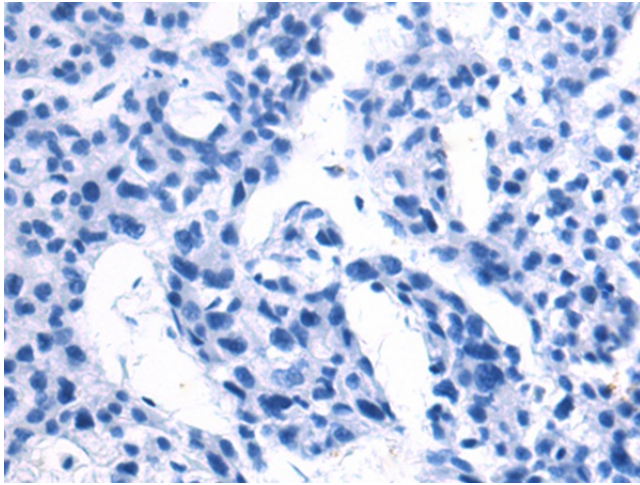
Product images:



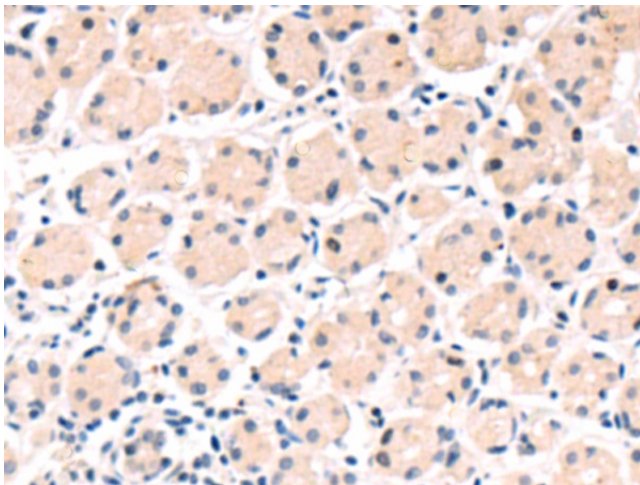
Gel: 8%SDS-PAGE  
 Lysate: 40 µg  
 Lane 1-3: Mouse placenta tissue  
 HeLa cell  
 HUVEC cell lysates  
 Primary antibody: [TA364547] (PGF Antibody) at dilution 1/500  
 Secondary antibody: Goat anti rabbit IgG at 1/5000 dilution  
 Exposure time: 40 seconds



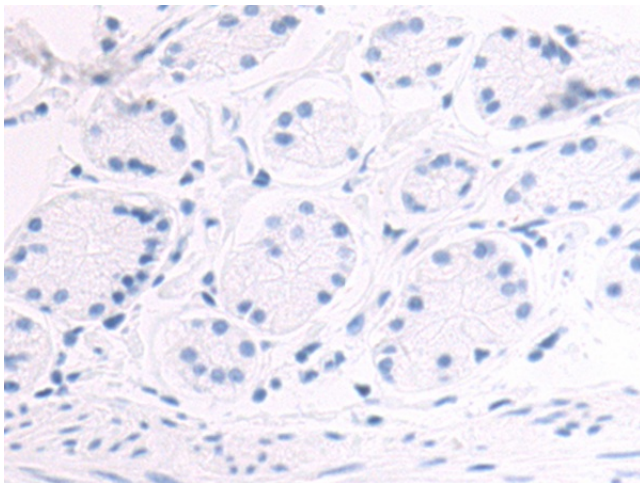
Immunohistochemistry of paraffin-embedded Human liver cancer tissue using [TA364547] (PGF Antibody) at dilution 1/70 (Original magnification: ×200)



Immunohistochemistry of paraffin-embedded Human liver cancer tissue using [TA364547] (PGF Antibody) at dilution 1/70, treated with fusion protein. (Original magnification: x200)



Immunohistochemistry of paraffin-embedded Human esophagus cancer tissue using [TA364547] (PGF Antibody) at dilution 1/70 (Original magnification: x200)



Immunohistochemistry of paraffin-embedded Human esophagus cancer tissue using [TA364547] (PGF Antibody) at dilution 1/70, treated with fusion protein. (Original magnification: x200)