

## Product datasheet for **TA364546S**

### Prohibitin (PHB) Rabbit Polyclonal Antibody

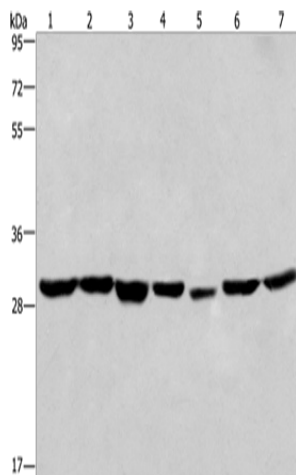
#### Product data:

Product Type:	Primary Antibodies
Applications:	IHC, WB
Recommended Dilution:	WB: 500-2000 WB positive control: 293T and A549 cells, human liver cancer tissue and PC3 cells, human placenta tissue, hela cells and mouse heart tissue IHC: 50-200 Positive control: Human liver cancer Predicted cell location: Cytoplasm
Reactivity:	Human, Mouse, Rat
Host:	Rabbit
Isotype:	IgG
Clonality:	Polyclonal
Immunogen:	Fusion protein of human PHB
Formulation:	pH7.4 PBS, 0.05% NaN <sub>3</sub> , 40% Glycerol
Purification:	Antigen affinity purification
Conjugation:	Unconjugated
Storage:	Store at -20°C.
Stability:	1 year
Predicted Protein Size:	30 kDa
Gene Name:	prohibitin
Database Link:	<a href="#">Entrez Gene 5245 Human P35232</a>
Background:	This gene is evolutionarily conserved, and its product is proposed to play a role in human cellular senescence and tumor suppression. Antiproliferative activity is reported to be localized to the 3' UTR, which is proposed to function as a trans-acting regulatory RNA. Several pseudogenes of this gene have been identified. Alternative splicing results in multiple transcript variants
Synonyms:	PHB1; prohibitin



[View online »](#)

## Product images:



Gel: 10%SDS-PAGE

Lysate: 40  $\mu$ g

Lane 1-7: 293T cells

A549 cells

human liver cancer tissue

PC3 cells

human placenta tissue

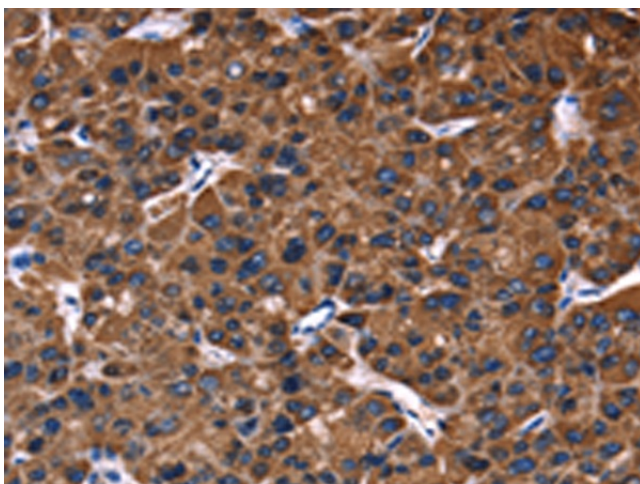
hela cells

mouse heart tissue

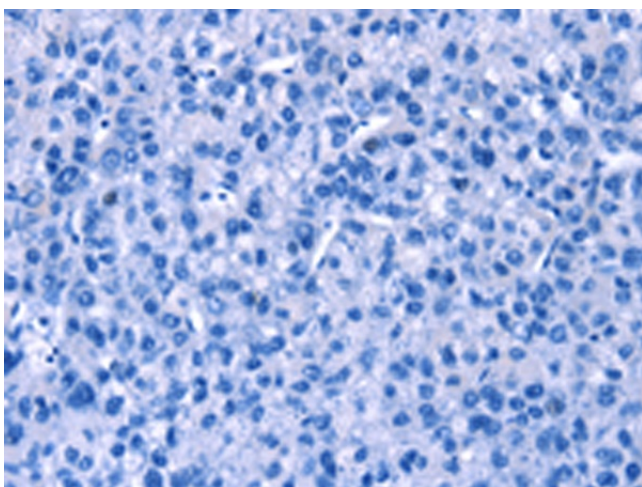
Primary antibody: [TA364546] (PHB Antibody) at dilution 1/350

Secondary antibody: Goat anti rabbit IgG at 1/8000 dilution

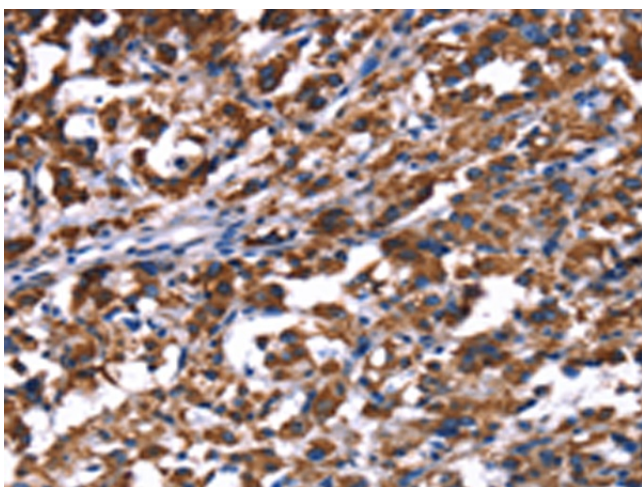
Exposure time: 15 seconds



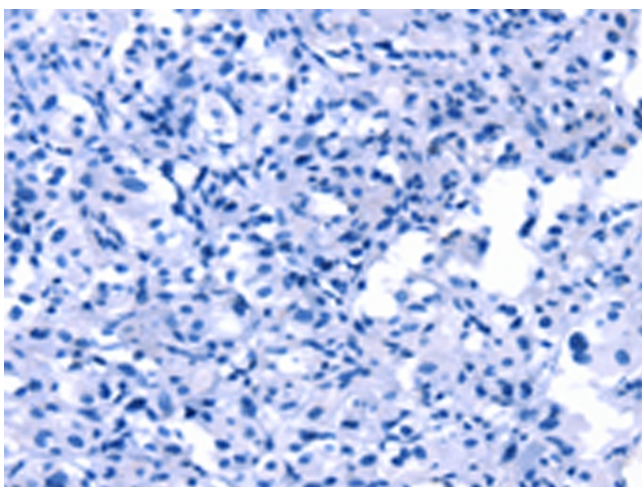
Immunohistochemistry of paraffin-embedded Human liver cancer tissue using [TA364546] (PHB Antibody) at dilution 1/30 (Original magnification:  $\times$ 200)



Immunohistochemistry of paraffin-embedded Human liver cancer tissue using [TA364546] (PHB Antibody) at dilution 1/30, treated with fusion protein. (Original magnification: x200)



Immunohistochemistry of paraffin-embedded Human thyroid cancer tissue using [TA364546] (PHB Antibody) at dilution 1/30 (Original magnification: x200)



Immunohistochemistry of paraffin-embedded Human thyroid cancer tissue using [TA364546] (PHB Antibody) at dilution 1/30, treated with fusion protein. (Original magnification: x200)