

Product datasheet for **TA364546**

Prohibitin (PHB) Rabbit Polyclonal Antibody

Product data:

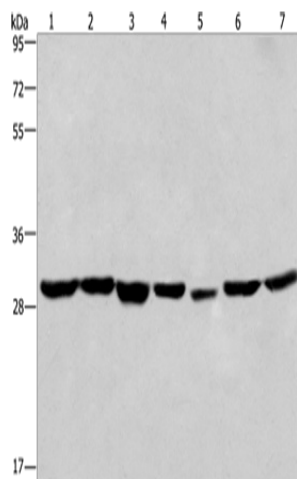
Product Type:	Primary Antibodies
Applications:	IHC, WB
Recommended Dilution:	WB: 500-2000 WB positive control: 293T and A549 cells, human liver cancer tissue and PC3 cells, human placenta tissue, hela cells and mouse heart tissue IHC: 50-200 Positive control: Human liver cancer Predicted cell location: Cytoplasm
Reactivity:	Human, Mouse, Rat
Host:	Rabbit
Isotype:	IgG
Clonality:	Polyclonal
Immunogen:	Fusion protein of human PHB
Formulation:	pH7.4 PBS, 0.05% NaN ₃ , 40% Glycerol
Concentration:	lot specific
Purification:	Antigen affinity purification
Conjugation:	Unconjugated
Storage:	Store at -20°C.
Stability:	1 year
Predicted Protein Size:	30 kDa
Gene Name:	prohibitin
Database Link:	Entrez Gene 5245 Human P35232
Background:	This gene is evolutionarily conserved, and its product is proposed to play a role in human cellular senescence and tumor suppression. Antiproliferative activity is reported to be localized to the 3' UTR, which is proposed to function as a trans-acting regulatory RNA. Several pseudogenes of this gene have been identified. Alternative splicing results in multiple transcript variants



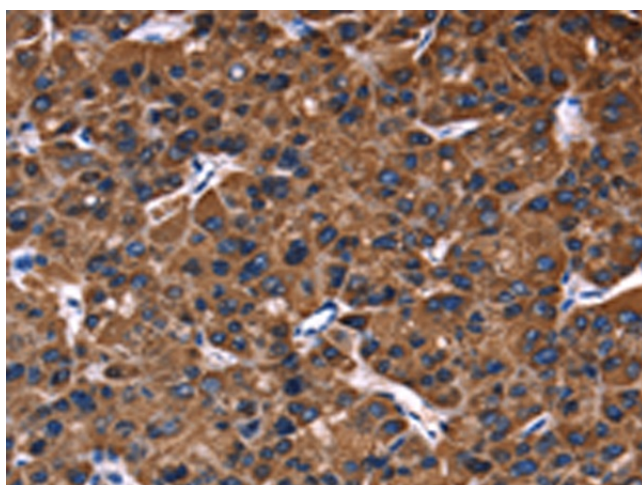
[View online »](#)

Synonyms: PHB1; prohibitin

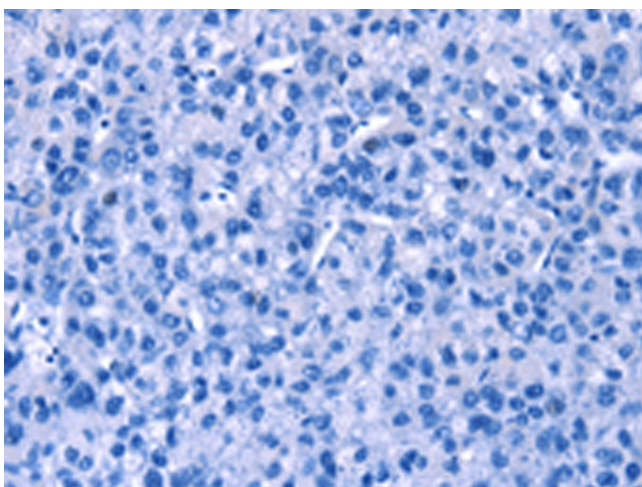
Product images:



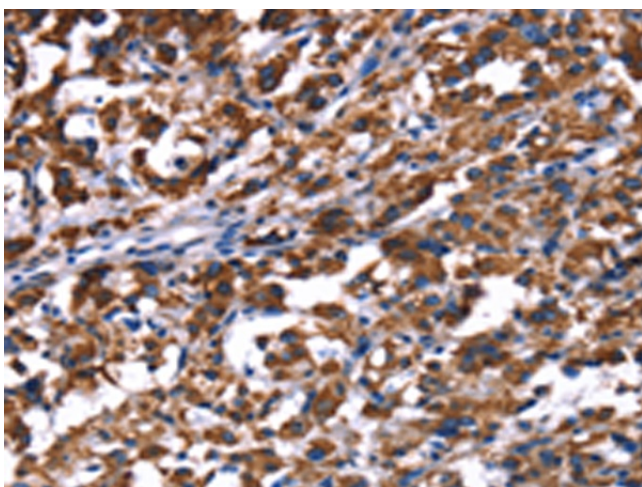
Gel: 10%SDS-PAGE
 Lysate: 40 µg
 Lane 1-7: 293T cells
 A549 cells
 human liver cancer tissue
 PC3 cells
 human placenta tissue
 hela cells
 mouse heart tissue
 Primary antibody: TA364546 (PHB Antibody) at dilution 1/350
 Secondary antibody: Goat anti rabbit IgG at 1/8000 dilution
 Exposure time: 15 seconds



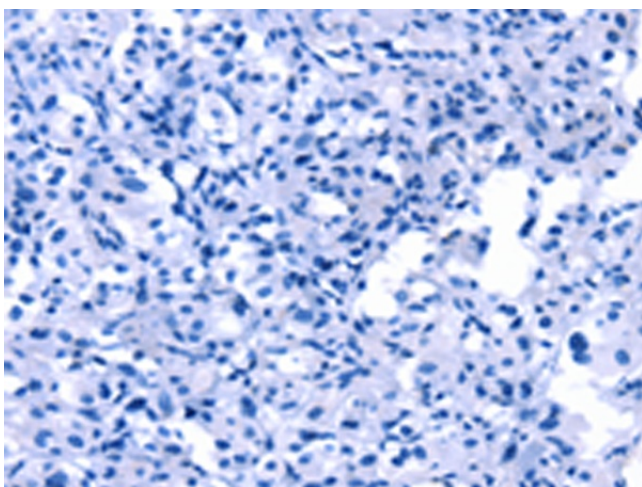
Immunohistochemistry of paraffin-embedded Human liver cancer tissue using TA364546 (PHB Antibody) at dilution 1/30 (Original magnification: ×200)



Immunohistochemistry of paraffin-embedded Human liver cancer tissue using TA364546 (PHB Antibody) at dilution 1/30, treated with fusion protein. (Original magnification: x200)



Immunohistochemistry of paraffin-embedded Human thyroid cancer tissue using TA364546 (PHB Antibody) at dilution 1/30 (Original magnification: x200)



Immunohistochemistry of paraffin-embedded Human thyroid cancer tissue using TA364546 (PHB Antibody) at dilution 1/30, treated with fusion protein. (Original magnification: x200)