

## Product datasheet for **TA364544S**

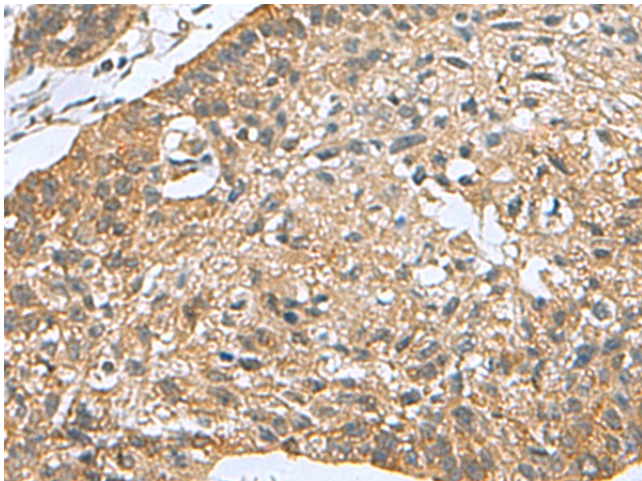
### PDCD5 Rabbit Polyclonal Antibody

#### Product data:

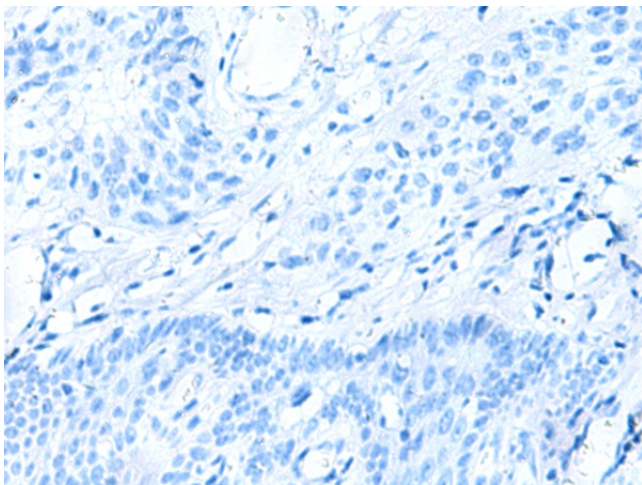
|                       |   |
|-----------------------|---|
| Product Type:         | Primary Antibodies  |
| Applications:         | IHC   |
| Recommended Dilution: | IHC: 100-200<br>Positive control: Human esophagus cancer<br>Predicted cell location: Cytoplasm  |
| Reactivity:           | Human, Mouse  |
| Host:                 | Rabbit  |
| Isotype:              | IgG   |
| Clonality:            | Polyclonal  |
| Immunogen:            | Fusion protein of human PDCD5   |
| Formulation:          | pH7.4 PBS, 0.05% NaN3, 40% Glycerol   |
| Purification:         | Antigen affinity purification   |
| Conjugation:          | Unconjugated  |
| Storage:              | Store at -20°C.   |
| Stability:            | 1 year  |
| Gene Name:            | programmed cell death 5   |
| Database Link:        | <a href="#">Entrez Gene 9141 Human Q14737</a>   |
| Background:           | This gene encodes a protein that is upregulated during apoptosis where it translocates rapidly from the cytoplasm to the nucleus. The encoded protein may be an important regulator of K(lysine) acetyltransferase 5 (a protein involved in transcription, DNA damage response and cell cycle control) by inhibiting its proteasome-dependent degradation. Pseudogenes have been identified on chromosomes 5 and 12 |
| Synonyms:             | MGC9294; TFAR19   |



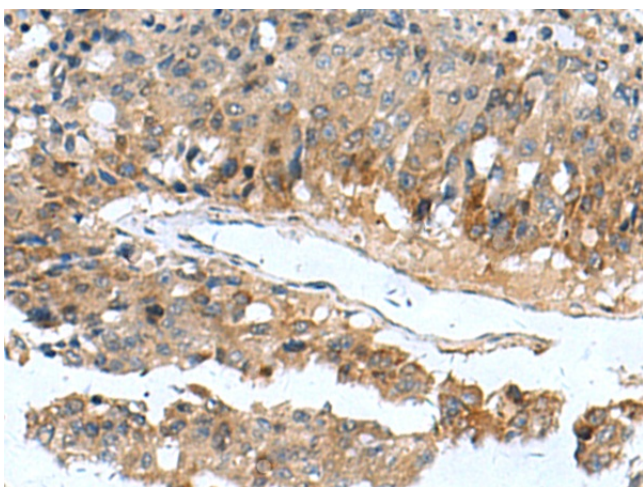
[View online »](#)

**Product images:**

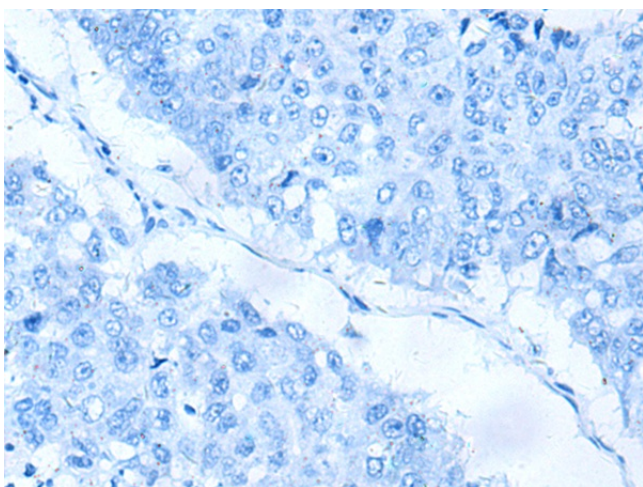
Immunohistochemistry of paraffin-embedded Human esophagus cancer tissue using [TA364544] (PDCD5 Antibody) at dilution 1/105 (Original magnification:  $\times 200$ )



Immunohistochemistry of paraffin-embedded Human esophagus cancer tissue using [TA364544] (PDCD5 Antibody) at dilution 1/105, treated with fusion protein. (Original magnification:  $\times 200$ )



Immunohistochemistry of paraffin-embedded Human liver cancer tissue using [TA364544] (PDCD5 Antibody) at dilution 1/105 (Original magnification:  $\times 200$ )



Immunohistochemistry of paraffin-embedded Human liver cancer tissue using [TA364544] (PDCD5 Antibody) at dilution 1/105, treated with fusion protein. (Original magnification:  $\times 200$ )