

Product datasheet for **TA364538S**

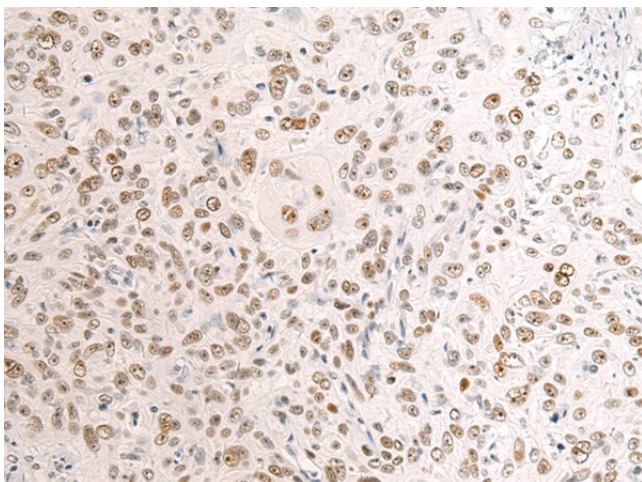
Rb (RB1) Rabbit Polyclonal Antibody

Product data:

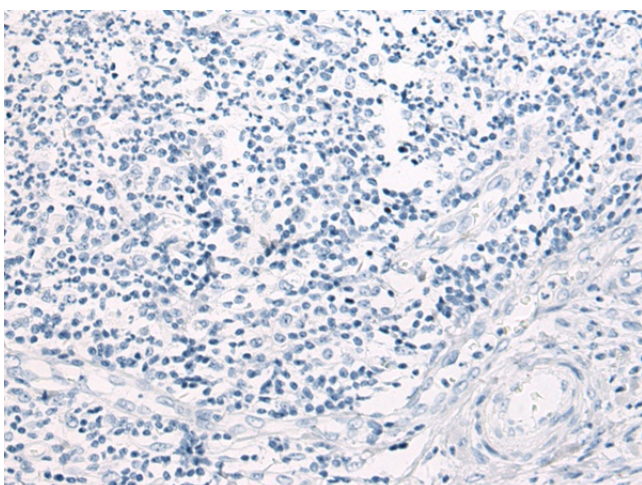
Product Type:	Primary Antibodies
Applications:	IHC
Recommended Dilution:	IHC: 50-100 Positive control: Human esophagus cancer Predicted cell location: Nucleus
Reactivity:	Human, Mouse, Rat
Host:	Rabbit
Isotype:	IgG
Clonality:	Polyclonal
Immunogen:	Fusion protein of human RB1
Formulation:	pH7.4 PBS, 0.05% NaN ₃ , 40% Glycerol
Purification:	Antigen affinity purification
Conjugation:	Unconjugated
Storage:	Store at -20°C.
Stability:	1 year
Gene Name:	RB transcriptional corepressor 1
Database Link:	Entrez Gene 5925 Human P06400
Background:	The protein encoded by this gene is a negative regulator of the cell cycle and was the first tumor suppressor gene found. The encoded protein also stabilizes constitutive heterochromatin to maintain the overall chromatin structure. The active, hypophosphorylated form of the protein binds transcription factor E2F1. Defects in this gene are a cause of childhood cancer retinoblastoma (RB), bladder cancer, and osteogenic sarcoma.
Synonyms:	OSRC; osteosarcoma; p105-Rb; pp110; pRb; RB



[View online »](#)

Product images:

Immunohistochemistry of paraffin-embedded Human esophagus cancer tissue using [TA364538] (RB1 Antibody) at dilution 1/90 (Original magnification: $\times 200$)



Immunohistochemistry of paraffin-embedded Human esophagus cancer tissue using [TA364538] (RB1 Antibody) at dilution 1/90, treated with fusion protein. (Original magnification: $\times 200$)