

## Product datasheet for **TA364518S**

### MCM6 Rabbit Polyclonal Antibody

#### Product data:

Product Type:	Primary Antibodies
Applications:	IHC, WB
Recommended Dilution:	WB: 500-2000 WB positive control: 293T, K562, NIH/3T3 and hela cells IHC: 50-200 Positive control: Human cervical cancer Predicted cell location: Nucleus
Reactivity:	Human, Mouse, Rat
Host:	Rabbit
Isotype:	IgG
Clonality:	Polyclonal
Immunogen:	Fusion protein of human MCM6
Formulation:	pH7.4 PBS, 0.05% NaN <sub>3</sub> , 40% Glycerol
Purification:	Antigen affinity purification
Conjugation:	Unconjugated
Storage:	Store at -20°C.
Stability:	1 year
Predicted Protein Size:	93 kDa
Gene Name:	minichromosome maintenance complex component 6
Database Link:	<a href="#">Entrez Gene 4175 Human Q14566</a>



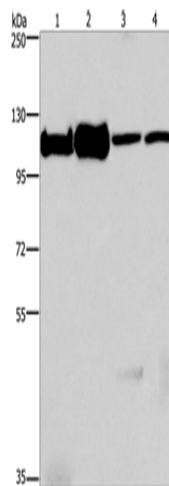
[View online »](#)

**Background:**

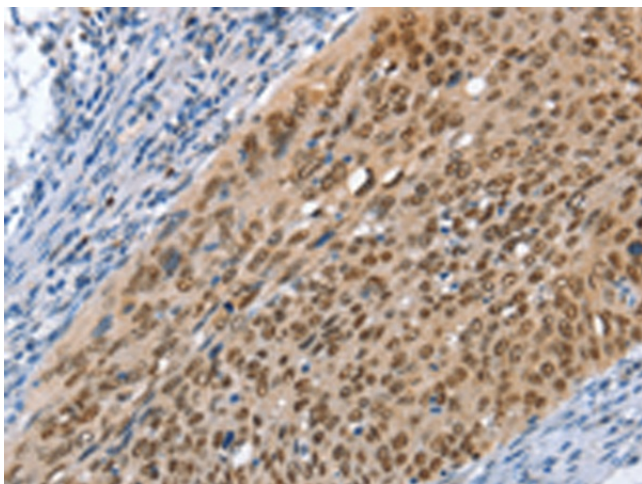
The protein encoded by this gene is one of the highly conserved mini-chromosome maintenance proteins (MCM) that are essential for the initiation of eukaryotic genome replication. The hexameric protein complex formed by the MCM proteins is a key component of the pre-replication complex (pre\_RC) and may be involved in the formation of replication forks and in the recruitment of other DNA replication related proteins. The MCM complex consisting of this protein and MCM2, 4 and 7 proteins possesses DNA helicase activity, and may act as a DNA unwinding enzyme. The phosphorylation of the complex by CDC2 kinase reduces the helicase activity, suggesting a role in the regulation of DNA replication.

**Synonyms:**

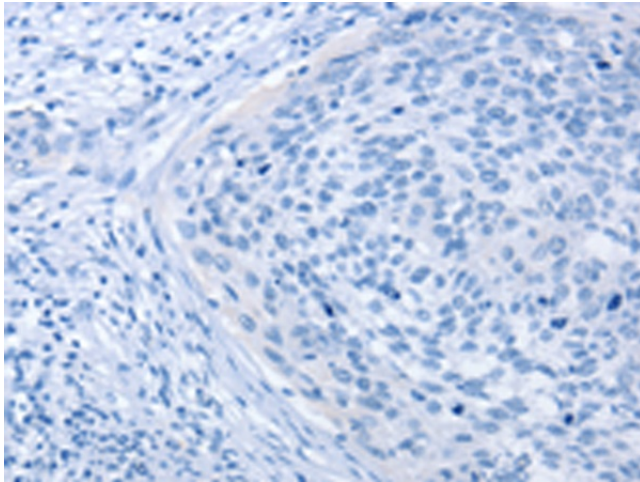
MCG40308; Mis5; P105MCM

**Product images:**

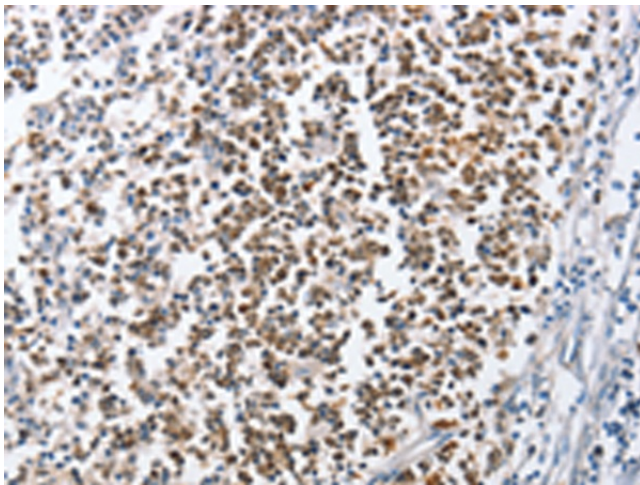
Gel: 10%SDS-PAGE  
Lysate: 40 µg  
Lane 1-4: 293T cells  
K562 cells  
NIH/3T3 cells  
hela cells  
Primary antibody: [TA364518] (MCM6 Antibody)  
at dilution 1/500  
Secondary antibody: Goat anti rabbit IgG at  
1/8000 dilution  
Exposure time: 30 seconds



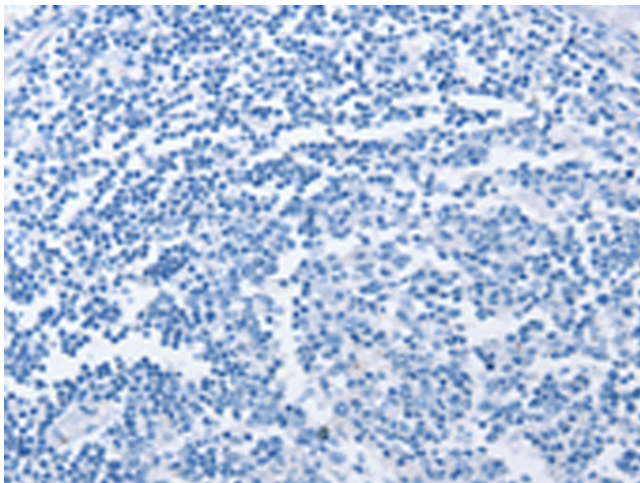
Immunohistochemistry of paraffin-embedded  
Human cervical cancer tissue using [TA364518]  
(MCM6 Antibody) at dilution 1/45 (Original  
magnification: ×200)



Immunohistochemistry of paraffin-embedded Human cervical cancer tissue using [TA364518] (MCM6 Antibody) at dilution 1/45, treated with fusion protein. (Original magnification: ×200)



Immunohistochemistry of paraffin-embedded Human tonsil tissue using [TA364518] (MCM6 Antibody) at dilution 1/45 (Original magnification: ×200)



Immunohistochemistry of paraffin-embedded Human tonsil tissue using [TA364518] (MCM6 Antibody) at dilution 1/45, treated with fusion protein. (Original magnification: ×200)