

## Product datasheet for **TA364516S**

### MASP1 Rabbit Polyclonal Antibody

#### Product data:

Product Type:	Primary Antibodies
Applications:	WB
Recommended Dilution:	WB: 200-1000 WB positive control: Hela cell, Mouse liver tissue, Rat liver tissue, Human heart tissue, Mouse brain tissue lysates
Reactivity:	Human, Mouse, Rat
Host:	Rabbit
Isotype:	IgG
Clonality:	Polyclonal
Immunogen:	Fusion protein of human MASP1
Formulation:	pH7.4 PBS, 0.05% NaN <sub>3</sub> , 40% Glycerol
Purification:	Antigen affinity purification
Conjugation:	Unconjugated
Storage:	Store at -20°C.
Stability:	1 year
Predicted Protein Size:	79 kDa
Gene Name:	mannan binding lectin serine peptidase 1
Database Link:	<a href="#">Entrez Gene 5648 Human P48740</a>



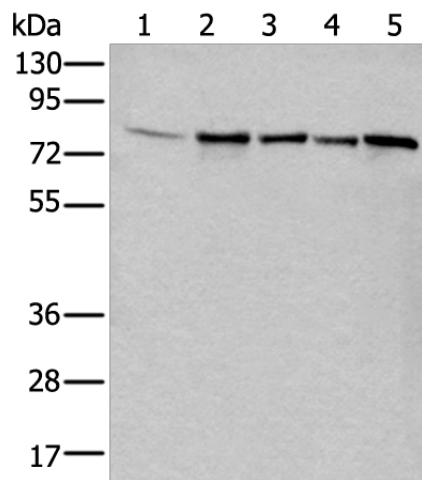
[View online »](#)

**Background:**

This gene encodes a serine protease that functions as a component of the lectin pathway of complement activation. The complement pathway plays an essential role in the innate and adaptive immune response. The encoded protein is synthesized as a zymogen and is activated when it complexes with the pathogen recognition molecules of lectin pathway, the mannose-binding lectin and the ficolins. This protein is not directly involved in complement activation but may play a role as an amplifier of complement activation by cleaving complement C2 or by activating another complement serine protease, MASP-2. The encoded protein is also able to cleave fibrinogen and factor XIII and may be involved in coagulation. A splice variant of this gene which lacks the serine protease domain functions as an inhibitor of the complement pathway. Alternate splicing results in multiple transcript variants.

**Synonyms:**

CRARF; CRARF1; DKFZp686I01199; FLJ26383; MASP; MASP-1; MGC126283; MGC126284; PRSS5; RaRF

**Product images:**

Gel: 8%SDS-PAGE  
Lysate: 40 µg  
Lane 1-5: Hela cell  
Mouse liver tissue  
Rat liver tissue  
Human heart tissue  
Mouse brain tissue lysates  
Primary antibody: [TA364516] (MASP1 Antibody)  
at dilution 1/200  
Secondary antibody: Goat anti rabbit IgG at  
1/8000 dilution  
Exposure time: 40 seconds