

Product datasheet for **TA364514**

MAD1 (MAD1L1) Rabbit Polyclonal Antibody

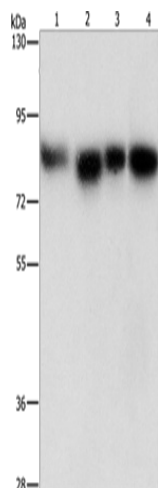
Product data:

Product Type:	Primary Antibodies
Applications:	WB
Recommended Dilution:	WB: 500-2000 WB positive control: Hela, 231, hepG2 and Raji cells
Reactivity:	Human, Mouse
Host:	Rabbit
Isotype:	IgG
Clonality:	Polyclonal
Immunogen:	Fusion protein of human MAD1L1
Formulation:	pH7.4 PBS, 0.05% NaN ₃ , 40% Glycerol
Concentration:	lot specific
Purification:	Antigen affinity purification
Conjugation:	Unconjugated
Storage:	Store at -20°C.
Stability:	1 year
Predicted Protein Size:	83 kDa
Gene Name:	MAD1 mitotic arrest deficient like 1
Database Link:	Entrez Gene 8379 Human Q9Y6D9
Background:	MAD1L1 is a component of the mitotic spindle-assembly checkpoint that prevents the onset of anaphase until all chromosome are properly aligned at the metaphase plate. MAD1L1 functions as a homodimer and interacts with MAD2L1. MAD1L1 may play a role in cell cycle control and tumor suppression. Alternative splicing results in multiple transcript variants.
Synonyms:	hMAD1; HsMAD1; MAD1; OTTHUMP00000200097; OTTHUMP00000200099; PIG9; TP53I9; TXBP181



[View online »](#)

Product images:



Gel: 8%SDS-PAGE

Lysate: 40 μ g

Lane 1-4: HeLa cells

231 cells

hepG2 cells

Raji cells

Primary antibody: TA364514 (MAD1L1 Antibody)
at dilution 1/500

Secondary antibody: Goat anti rabbit IgG at
1/8000 dilution

Exposure time: 5 seconds