

## Product datasheet for **TA364508S**

### Kallikrein 4 (KLK4) Rabbit Polyclonal Antibody

#### Product data:

Product Type:	Primary Antibodies
Applications:	IHC
Recommended Dilution:	IHC: 50-200 Positive control: Human cervical cancer Predicted cell location: Secreted
Reactivity:	Human
Host:	Rabbit
Isotype:	IgG
Clonality:	Polyclonal
Immunogen:	Fusion protein of human KLK4
Formulation:	pH7.4 PBS, 0.05% NaN <sub>3</sub> , 40% Glycerol
Purification:	Antigen affinity purification
Conjugation:	Unconjugated
Storage:	Store at -20°C.
Stability:	1 year
Gene Name:	kallikrein related peptidase 4
Database Link:	<a href="#">Entrez Gene 9622 Human Q9Y5K2</a>

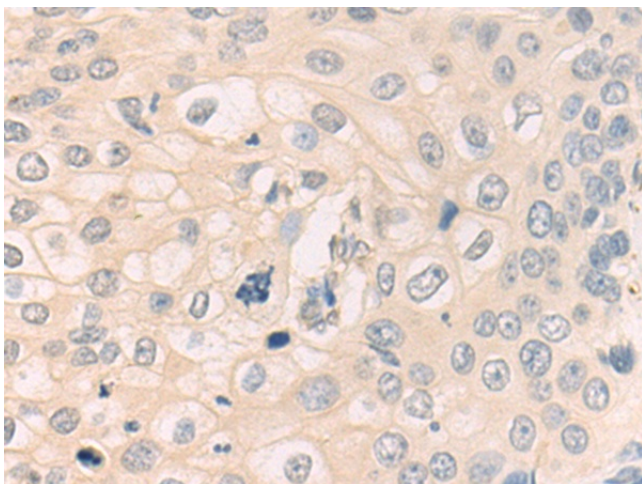
**Background:** Kallikreins are a subgroup of serine proteases having diverse physiological functions. Growing evidence suggests that many kallikreins are implicated in carcinogenesis and some have potential as novel cancer and other disease biomarkers. This gene is one of the fifteen kallikrein subfamily members located in a cluster on chromosome 19. In some tissues its expression is hormonally regulated. The expression pattern of a similar mouse protein in murine developing teeth supports a role for the protein in the degradation of enamel proteins. Several transcript variants encoding different proteins have been found for this gene.

**Synonyms:** AI2A1; ARM1; EMSP; EMSP1; KLK-L1; MGC116827; MGC116828; PROSTASE; PRSS17; PSTS

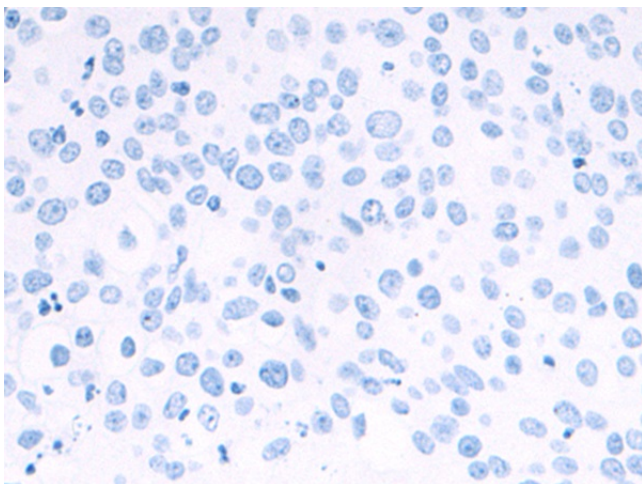


[View online »](#)

## Product images:



Immunohistochemistry of paraffin-embedded Human cervical cancer tissue using [TA364508] (KLK4 Antibody) at dilution 1/55 (Original magnification: ×200)



Immunohistochemistry of paraffin-embedded Human cervical cancer tissue using [TA364508] (KLK4 Antibody) at dilution 1/55, treated with fusion protein. (Original magnification: ×200)