

Product datasheet for **TA364507S**

KIF3A Rabbit Polyclonal Antibody

Product data:

Product Type:	Primary Antibodies
Applications:	IHC, WB
Recommended Dilution:	WB: 200-1000 WB positive control: Mouse brain and human fetal brain tissue, human brain malignant glioma tissue IHC: 25-100 Positive control: Human thyroid cancer Predicted cell location: Cytoplasm
Reactivity:	Human, Mouse
Host:	Rabbit
Isotype:	IgG
Clonality:	Polyclonal
Immunogen:	Fusion protein of human KIF3A
Formulation:	pH7.4 PBS, 0.05% NaN ₃ , 40% Glycerol
Purification:	Antigen affinity purification
Conjugation:	Unconjugated
Storage:	Store at -20°C.
Stability:	1 year
Predicted Protein Size:	80 kDa
Gene Name:	kinesin family member 3A
Database Link:	Entrez Gene 11127 Human Q9Y496



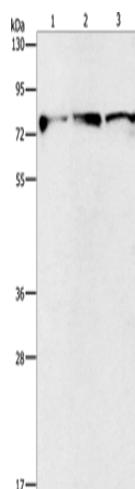
[View online »](#)

Background:

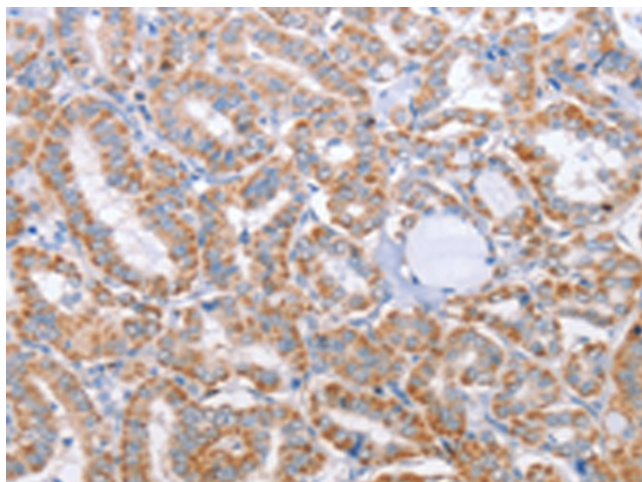
Kinesin-like protein KIF3A is a protein that in humans is encoded by the KIF3A gene. Members of the heterotrimeric kinesin II family of microtubule associated motors generally contain two different motor subunits from the KIF3 family, which includes KIF3A, B and C. KIF3 isoforms mediate anterograde transport of membrane bound organelles in neurons and melanosomes, transport between the endoplasmic reticulum and the Golgi, and transport of protein complexes within cilia and flagella required for their morphogenesis. KIF3A may influence neurogenesis at the level of embryonic cellular events, where the asymmetry of the genetic control circuit controlling left-right (L-R) axis determination is defined. Loss of KIF3A function in mice photoreceptors causes apoptotic cell death, suggesting that kinesin II mediated transport is required for proper cell fate.

Synonyms:

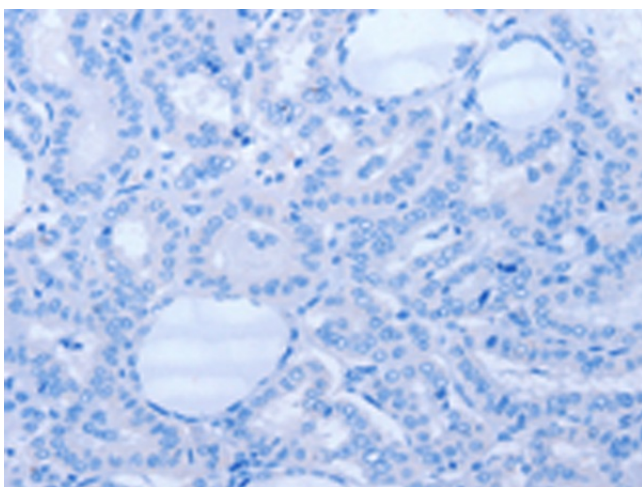
KIF3

Product images:

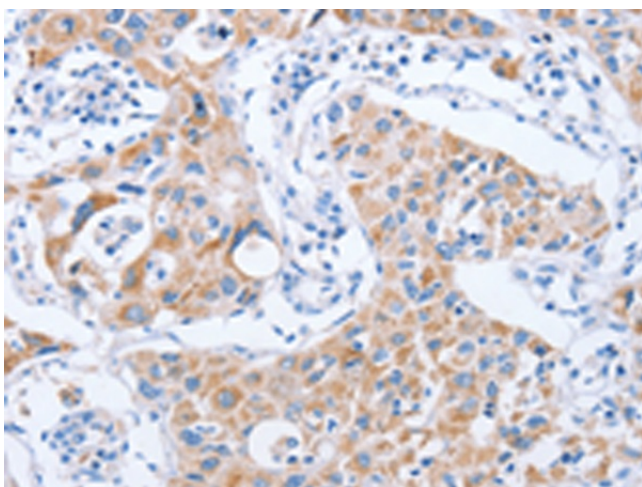
Gel: 8%SDS-PAGE
Lysate: 40 μ g
Lane 1-3: Mouse brain tissue
human fetal brain tissue
human brain malignant glioma tissue
Primary antibody: [TA364507] (KIF3A Antibody) at dilution 1/500
Secondary antibody: Goat anti rabbit IgG at 1/8000 dilution
Exposure time: 1 second



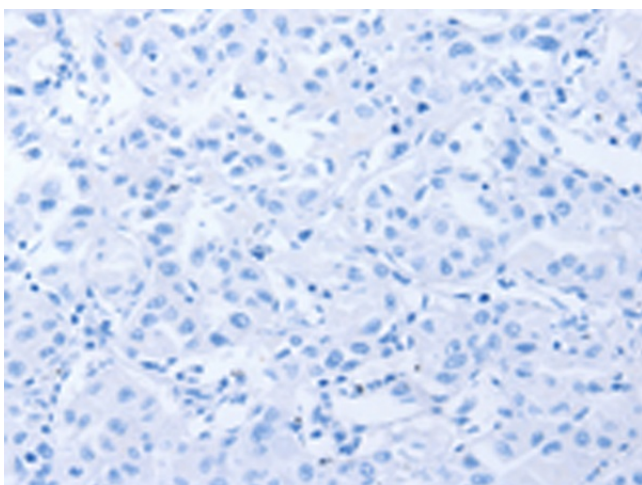
Immunohistochemistry of paraffin-embedded Human thyroid cancer tissue using [TA364507] (KIF3A Antibody) at dilution 1/25 (Original magnification: \times 200)



Immunohistochemistry of paraffin-embedded Human thyroid cancer tissue using [TA364507] (KIF3A Antibody) at dilution 1/25, treated with fusion protein. (Original magnification: ×200)



Immunohistochemistry of paraffin-embedded Human lung cancer tissue using [TA364507] (KIF3A Antibody) at dilution 1/25 (Original magnification: ×200)



Immunohistochemistry of paraffin-embedded Human lung cancer tissue using [TA364507] (KIF3A Antibody) at dilution 1/25, treated with fusion protein. (Original magnification: ×200)